



Welcome

District of Columbia GIS Steering Committee Meeting

January 19, 2006

1:00 – 3:30 PM

Conference Room 1117, 441 4th Street NW



# Agenda

- Introductions – *Barney Krucoff*
- DC GIS News – *Barney Krucoff*
  - ESRI Enterprise License Update
  - ESRI Federal User Conference
  - Planimetric Map Update
  - Regional Geospatial Interoperability Update
  - New DCGIS.DC.GOV & DCGIS.IN.DC.GOV
  - Other
- Data Report (new / modified geospatial data) – *Mario Field*
- Training Report – *Tim Abdella*
  - New Documentation
- Vector Property Map Update – *Bill Bond and Rasheed Berry*
- Agency Presentation: DC Stat – *Marina Havan*
- Other / Round Table



# DC GIS News

- ESRI Enterprise License Update
- ESRI Federal User Conference
- Planimetric Map Update
- Regional Geospatial Interoperability Update
- New [dcgis.dc.gov](http://dcgis.dc.gov) & [dcgis.in.dc.gov](http://dcgis.in.dc.gov)
- Other

**DC Intranet**

January 19, 2006 12:09 PM

Search:  [ASK](#)

**District of Columbia Geographic Information System**

**Services**

- Web Mapping Applications
- Data Clearinghouse/ Catalog
- Desktop Mapping Applications
- Tools for Application Developers
- GIS Project Managers (Liaisons)
- Training

**Information**

- About DC GIS
- DC GIS Steering Committee
- Federated Data Model
- Standards
- DC PDF Maps and Agency Links
- Federal and Regional Links
- Glossary
- FAQs

**DC GIS NEWS**

**New DC GIS Web Site Launches**  
The site contains new content and has greater ease of navigation.  
[Full Text](#)

**GIS Training Classes Available**  
Three GIS courses will be offered monthly to all DC personnel.  
[Full Text](#)

**Research Building Addresses with the Master Address Repository (MAR)**  
New repository facilitates analysis across systems and agencies.  
[Full Text](#)

[DC GIS HOME](#)  
[SERVICES](#)  
[INFORMATION](#)

[Agencies](#) [Home](#)

Login | Contact Webmaster | Site Map | View as Text Only

**DC HOME** **DC GUIDE** **RESIDENTS** **BUSINESS** **VISITORS** **DC GOVERNMENT** **GIS** **Tools** **Q**

**Geographic Information Systems**

**District of Columbia Geographic Information System**

**Services**

- Explore Neighborhoods
- Find an Address
- Make a Map
- Calculate a Taxi Fare
- Research Real Property
- Use the DC Atlas (for detailed mapping and querying)
- Search for GIS Data
- Frequently Requested Maps

**Information**

- DC GIS Program Information
- DC GIS Steering Committee
- Frequently Asked Questions
- GIS Standards
- Glossary
- Regional and Federal GIS Links

**DC GIS NEWS**

**New DC GIS Web Site Launches**  
The site contains new content and has greater ease of navigation.  
[Full Text](#)

**GIS Training Classes Available**  
Three GIS courses will be offered monthly to all DC personnel.  
[Full Text](#)

**Research Building Addresses with the Master Address Repository (MAR)**  
New repository facilitates analysis across systems and agencies.  
[Full Text](#)

**Office of the Chief Technology Officer**  
441 4th Street, NW, Suite 930 South  
Washington, DC 20001 (202) 727-2277

Government of the District of Columbia  
Citywide Call Center (202) 727-1000  
TTY/VOI Directory

Telephone Directory by Topic | Agencies | DC Council | Search | Elected Officials  
Feedback | Translations | Accessibility | Privacy & Security | Terms & Conditions

John A. Wilson Building  
1350 Pennsylvania Avenue, NW  
Washington, DC 20004



# Updated DC GIS Data

- **Address Point (MAR)**
- **Charter School**
- **Commission of Fine Arts**
- **Economic Development Zone**
- **Fire Alarm District**
- **Metro Bus Route**
- **Overlay Zoning**
- **Planned Unit Development**
- **Post Office**
- **Public School**
- **Public School Administration**
- **Street Centerline**
- **Zoning**



# Current DC GIS Data Update

- **Air Emission**
  - **Digital Globe Satellite Imagery (10/05)**
  - **Fire Alarm District**
  - **GSA Federal Building**
  - **Hazardous Waste**
  - **Heliport**
  - **Other Bus Line**
  - **Other Bus Stop**
  - **Toxic Release Inventory**
  - **Water Discharge**
- » **January 2006 publication**



# Master Address Repository (MAR)

## MAR PROGRESS SINCE JULY 2005:

- **TOTAL ADDRESSES 7/1/05: 128,531**
- **TOTAL ADDRESSES 12/31/05: 135,038**
  - Active Addresses: 134,384**
  - Retired: 654**

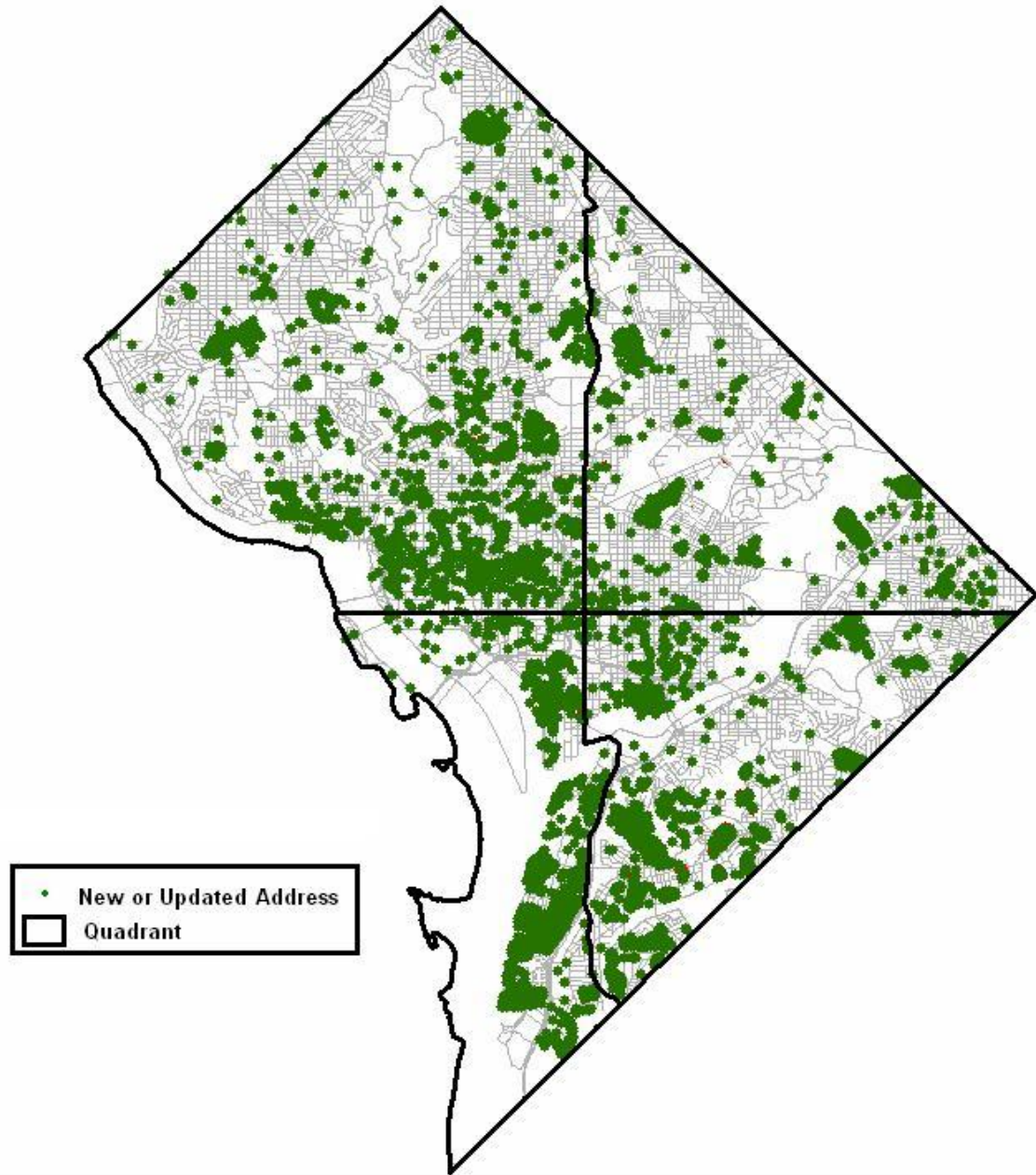


# Master Address Repository (MAR)

	<b>Since 7/05</b>	<b>Average /Month</b>
<b>Number of Address Points Added:</b>	<b>6507</b>	<b>1084</b>
<b>Number of Alias Records Added:</b> (Associated With Unique Address Points)	<b>4517</b>	<b>750</b>
<b>Number of Address Points Moved/Updated:</b>	<b>4388</b>	<b>730</b>



New and Updated MAR Addresses Since July 2005







# DC GIS Training Status Report

Tim Abdella  
GeoSpatial Education Director



# Reportable Topics

- Status of Course Material
- CWD GIS Courses
- DC GIS Education e-Newsletter
- Documentation Online
- Tools and Downloads
- Additional Items of Note



# CWD Classes



## Introduction to DC GIS using ArcGIS I

February 13-14

June 21-22

February 27-18

July 27-28

May 25-26

## DC GIS Tools for Professional Analysts

May 16

August 15

June 7

September 12

July 18

## Managers Overview of DC GIS Services and Applications

January 26

June 28

February 16

July 20

May 4

September 14



# CWD Class Registration

## Course Registration:

- Select Classes
- Get Supervisor Approval
- Complete the Standard Training Authorization Form 1
- Send to Training Coordinator for his/her review and signature
- Confirmation of enrollment in the course will be emailed to you
- Notify CWD if you can not attend within 3 days of the class
- For more information about CWD, call (202) 727-1523
- All Information is on DC GIS Training web page

<http://www.dcop.in.dc.gov>

Click on:

Training and Development





# Preliminary Success

- First set of classes completed successfully
  - Great way to meet the user community
  - Listening to issues / complaints
  - Working on improving usability / accessibility
- Items to work on
  - Tweaks to the material
  - Raster performance
  - Content overload for some students
  - “Managers” class should be first class in series



# DC GIS Education Newsletter

- Monthly Newsletter
  - November 28<sup>th</sup> 2005
  - December 22<sup>nd</sup> 2005
- Sent to over 400 recipients
  - Looking for more recipients
  - Add / Remove from website
- Achieves available on-line

[www.dcgis.in.dc.gov](http://www.dcgis.in.dc.gov) → Training



OFFICE OF THE CHIEF TECHNOLOGY OFFICER

## DC GIS Education Newsletter

**DC GIS Launches Improved Website**  
The long awaited DC GIS Intranet site is live!  
DC GIS Intranet <http://dcgis.in.dc.gov>  
Complete with a new look and complying to OCTO web standards. The DC GIS Intranet site is the one-stop spot for all DC agency GIS needs. Take the time to explore all of the resources available. One section that everyone should familiarize themselves with is the GIS [Standards](#).

**DC GIS Training page**  
Your gateway to GIS education. Find out information on classes, schedules and the registration process. Discover how to take advantage of free ESRI Virtual Campus courses, and look for virtual classes offered from DC GIS. Find the current and archived Newsletters, class brochures and how to earn a GIS professional Certification.

**DC GIS Toolbar available through Hosted Applications**  
DC GIS is now providing advanced functionality and an improved user experience through a custom developed toolbar for ArcGIS. The DC GIS Toolbar, accessed from the [Citrix hosted](#) ArcMap 9 application, provides several rich features enabling users greater access to DC GIS resources. A full users manual will be available shortly.

To access the toolbar: [Log into](#) Citrix from the [Hosted Mapping Applications page](#), select ArcMap 9 from the ArcGIS 9 Folder, then choose *View > Toolbars > DC GIS Toolbar* from the Main ArcMap Menu.



**CWD Class Registration Process**  
To register for classes, complete the [Standard Training Authorization Form 1](#) and send it to your Agency Training Coordinator for approval. Confirmation of enrollment in the course will be emailed to you and your Training Coordinator no later than five business days prior to the scheduled start date. Those who are not enrolled will not be contacted.  
To complete [Standard Training Authorization Form 1](#) fill out the following numbered items: 1, SSN-last four, 2, 3, 4, 7, 8, 9, 10, 11, 17, 18 & 19. If you have questions or need assistance, please contact CWD at 202-727-1523

To remove your name from our mailing list, please [click here](#).  
Questions or comments? E-mail us at [tim.abdella@dc.gov](mailto:tim.abdella@dc.gov) or call 202-727-4946

**Volume 1: Issue 3**  
November 28, 2005



The CWD GIS Course Offerings 2006 Flyer is now available [here](#)

**Upcoming Classes:**

11/30	Managers
12/8	Managers
12/9	Professional
12/13	Intro to DC GIS
1/10	Professional

**Important Links:**  
[Training Web Site](#)  
[CWD Class Registration](#)  
[DC GIS Intranet](#)  
[DC GIS Internet](#)  
[ESRI Virtual Campus](#)  
[Citrix Applications](#)

**Highlighted Events:**  
[Network Analyst Webinar](#)  
[NAHDO 20th Annual GIS in Homeland Security](#)  
[Hampton Roads User Group](#)  
[ESRI Federal Conference](#)  
[NACCHO - Health](#)  
[ESRI Developer Summit](#)



[Download ArcGIS DC Metadata Templates from Intranet](#)

OFFICE OF THE CHIEF TECHNOLOGY OFFICER

## DC GIS Education Newsletter

**Volume 1: Issue 4**  
December 22, 2005



The CWD GIS Course Offerings 2006 Flyer is now available [here](#)

**Upcoming Classes:**

1/10	Professional
1/26	Managers
1/30	Intro to DC GIS
2/1	Professional
2/16	Managers

**Important Links:**  
[Training Web Site](#)  
[CWD Class Registration](#)  
[DC GIS Intranet](#)  
[DC GIS Internet](#)  
[ESRI Virtual Campus](#)  
[Citrix Applications](#)

**Highlighted Events:**  
[DC GIS Steering Committee](#)  
[NCSE 6th Conference](#)  
[Free Spatial Statistics Training](#)  
[ESRI Federal Conference](#)  
[NACCHO - Health](#)  
[ESRI Developer Summit](#)



Happy Holiday  
From DC GIS

MAR record count: 134,200

To remove your name from our mailing list, please [click here](#).  
Questions or comments? E-mail us at [tim.abdella@dc.gov](mailto:tim.abdella@dc.gov) or call 202-727-4946



# New User Guides

- Getting Started with Citrix
- Getting Started with Pictometry in Citrix
- Pictometry Electronic Field Study (EFS) User Guide
- Getting Started with ArcGIS in Citrix
  - Includes the complete guide to the DCGIS Toolbar
- ESRI Product Documentation Page
- Using the MAR Batch Geocoder
  - Included in the stand alone installer

[www.dcgis.in.dc.gov](http://www.dcgis.in.dc.gov) → Desktop Mapping Applications



# Tools and Downloads

- ArcGIS metadata templates (.xml format)
  - Use to generate Federated Data Model compliant Metadata
- ArcGIS map templates (.mxt format)
  - Base line starting point for map elements
- ArcGIS layer files (.lyr format)
  - Predefined symbology for Central Data Repository
  - Update and documentation coming soon
- Standalone MAR Batch Geocoder Installer
  - updated: 1/10/2006 with documentation
  - Uses Web services

[www.dcgis.in.dc.gov](http://www.dcgis.in.dc.gov) → Desktop Mapping Applications





# Additional Items of Note

- DC GIS Tools
  - Base Map Group Layer
  - Mobile Video Return
  - Temporary Disk space “T:\” drive
  - MAR Standalone Geocoder
- Future work
  - Model Builder based feature level generalization
  - Custom MAR Locator Service
  - Complete Guide to Geocoding in DC
  - Complete Guide to Layerfiles

**Demonstration**



# Q&A

**Timothy L Abdella**

**GeoSpatial Education Director**

*Office of the Chief Technology Officer*

*441 4th Street, NW*

*Washington, DC 20001*

*tim.abdella@dc.gov*

*202-727-4946 Office*

*716-308-0000 Cell*

**Thank you**



# VECTOR PROPERTY MAP PROJECT

<b>PROJECT DURATION</b>	<b>OCT 2003 – JUNE 2006</b>
<b>SQUARES VECTORIZED</b>	<b>4867</b>
<b>RECORD, TAX, &amp; PARCEL LOTS - VECTORIZED</b>	<b>182,762</b>
<b>DELIVERABLE UNITS</b>	<b>15</b>
<b>% OF WORK QA/QC'D</b>	<b>98</b>
<b>MAINTENANCE EFFORT (Oct 2003 – Sept 2005)</b>	<b>APPROX. 1300 CHANGES</b>



# VPM Actions to be Completed

- COMPLETE FINAL QA/QC ON DELIVEABLES 12 THRU 15
- MERGE ALL DELIVEABLES INTO ONE GEODATABASE
- APPLY CHANGES TO GEODATABASE SINCE OCT/2003
- QA/QC CHANGES TO GEODATABASE
- MOVE UPDATED GEODATABASE TO OCTO SERVER

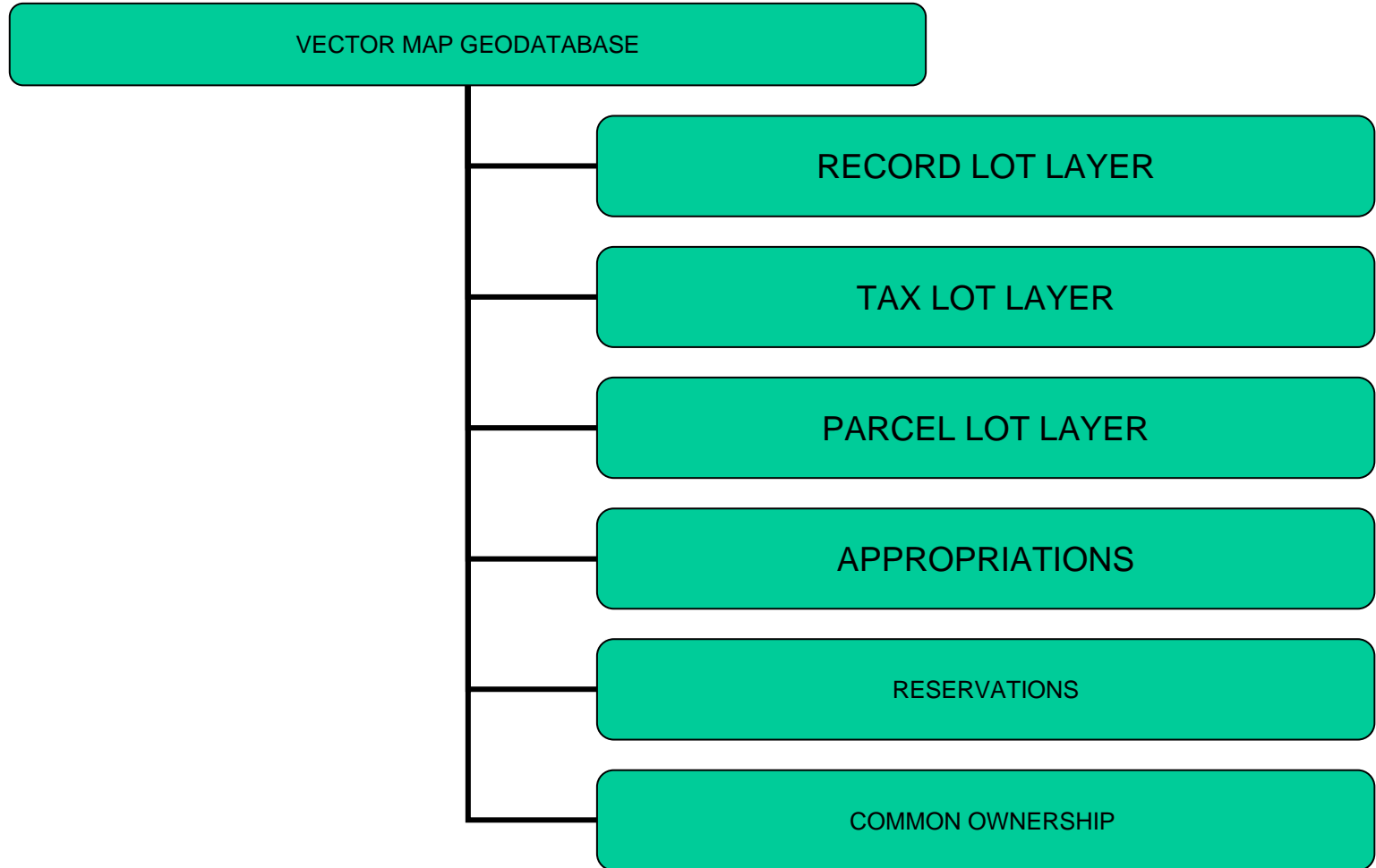


# VPM Maintenance Application

- ADD ADDITIONAL FUNCTIONALITY
- CHECK ALL SUBDIVISION, BUILDING, & A&T PLAT PRINTING
- WRITE REVISED OPERATING PROCEDURES FOR VPM
- UPDATE MAINTENANCE APPLICATION PROCEDURES MANUAL



# VPM Geodatabase Layers





# VPM Lots Remaining to be Vectorized

<b>PARCELS</b>	<b>744 (OUTSIDE OF SQUARES)</b>
<b>*APPROPRIATIONS</b>	<b>13</b>
<b>•RESERVATIONS</b>	<b>300</b>
<b>•ESTIMATED COMPLETION OF ABOVE ITEMS</b>	<b>January 2007</b>
<b>•NOTE: REQUIRES INFORMATION FROM NATIONAL PARK SERVICE</b>	



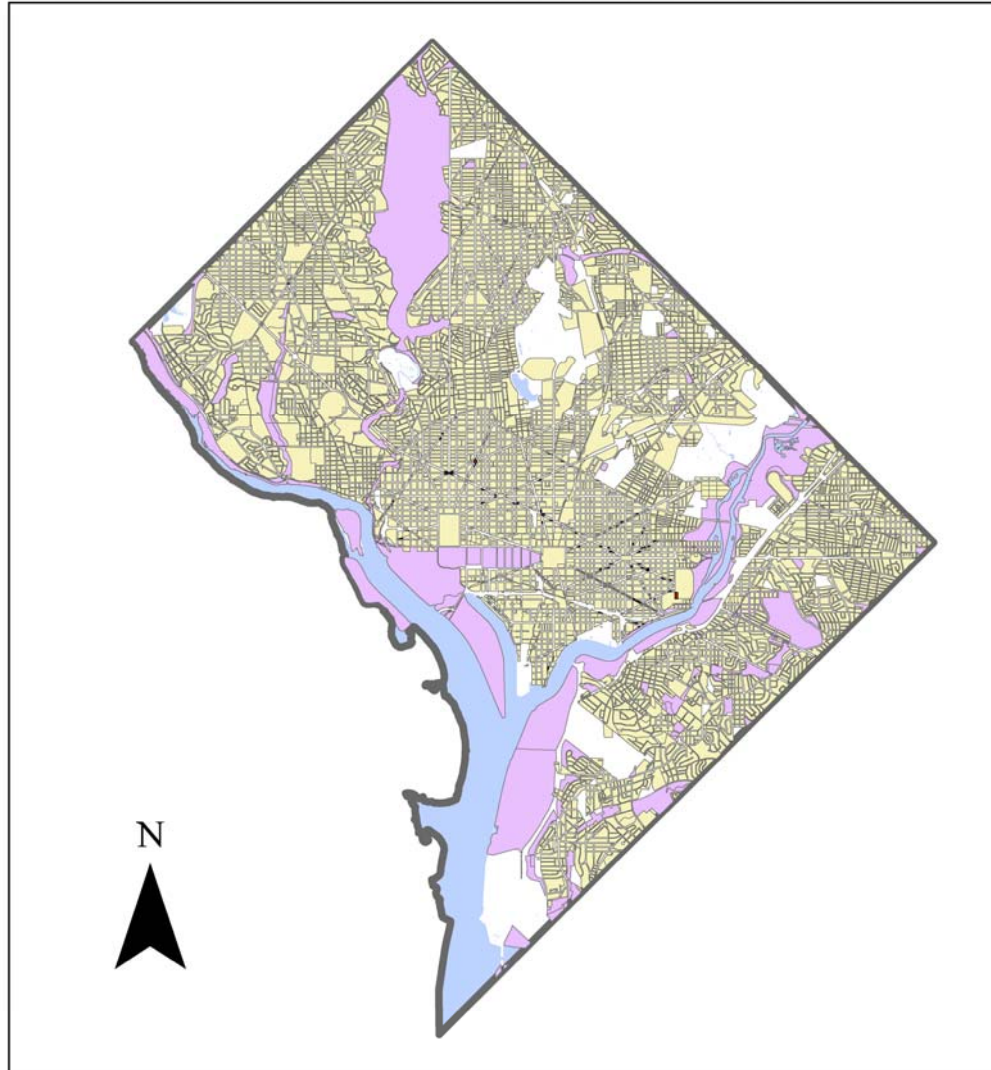
# VPM Operational Tasks

- TRAIN ONE PERSON FROM EACH AGENCY (DCRA/OTR)
- UPDATE GEODATABASE WITH CHANGES FROM OCT 2005
- TRAIN ALL OTHER AGENCY PERSONNEL (GIS & Maint Appl)
- TRAIN AGENCY PERSONNEL IN NEW PROCESSING PROCEDURES
- RUN PARALLEL SYSTEM FOR TWO WEEKS
- MAKE OPERATIONAL OVER A WEEKEND.











# VECTOR PROPERTY PROJECT SQUARES STATUS MAP 1/19/06



APPROXIMATE SQUARES IN DC - 4867  
TOTAL LOTS CAPTURED (AIR RIGHTS, PARCEL, RECORD, AND TAX) - 182,762

-  4867 Squares: Delivery 1- Delivery 15 (D12 - D15 returned to Dewberry for corrections)
-  83 OTR Reservations (To be captured in a future phase)
-  300 NPS Reservations (To be captured in a future phase)
-  Parks
-  Water
-  DC Boundary

Sources:  
Office of the Surveyor (DCRA)  
Office of Tax and Revenue (OTR)  
Office of the Chief Technology Officer (OCTO)  
National Park Service (NPS)

Date: May 17, 2004  
Prepared by: DC-OCTO-GIS



Information on this map is for illustration only. The user acknowledges and agrees that the use of this information is at the sole risk of the user. No endorsement, liability, or responsibility for information or opinions expressed are assumed or accepted by any agency of the District of Columbia Government.



# Agency Presentation

- DC Stat – *Marina Havan*

**DCStat Neighborhood View**

Username: \_\_\_\_\_ Password: \_\_\_\_\_ [Register](#) [Login](#)

Print: Help: Telephone: Monday, October 17 2:46:15 PM

**My Dashboard** **Service Requests**

**Map Contents** [Reset Map](#)

- DCStat Map Features
  - My Map Display
    - Crime
    - Service Requests
    - Business
    - Human Services
    - Education
    - Property
    - Administrative Areas
    - District Government Facilities
    - Transportation
    - Recreation
    - Natural Features
    - Aerial Photos
    - Other

**Legend** **Watch** **Locate**

- Hot Spots
- Wards
- Primary Streets
- Water
- Mask
- DC Boundary
- Park

**Use DCStat Neighborhood View to**

- Locate crime data, constituent service requests, and other features on the map
- Set up a watch to notify you when designated incidents happen in a specified area
- Link to the online service request center (click Service Requests tab above)

**Quick Start**

- Select from Map Contents (upper right frame) to add features to the map.
- [Registering](#) for DCStat will enable you to save Watches that will notify when chosen incidents occur in a selected area.



# GIS Steering Committee

DCStat Project Update



# Overview

- Activities
- Demo
- Resources
- Future direction



# Activities

- CapStat
  - DHS grant to improve homeland security-related 'conductivity' between EOC's and government agencies in National Capital Region
  - Pilot project to establish secure network that enables applications to work together and exchange information on regional basis
  - Partners/participants: DC, State of Maryland EMA, Fairfax County, Frederick County
- Enterprise Information Management
  - Enable frictionless publication, flow and dissemination of the District's digital information
  - Data warehouse, taxonomy, ontology, metadata
  - Study complete this month



# Activities

- Hotspots (ONS)
- Clean City
- Express Training
- DCRA Executive Briefing
- Mayor's Nuisance Properties Task Force
- Business Intelligence



# DCRA Executive Briefing Issue

## Business Licensing of Rental Properties

Would higher landlord compliance with business license and inspection regulations improve safety for District renters?

### Key Findings:

- An estimated 94% of residential single-family rental properties are not licensed
- \$3.4 million or more in revenue related to Business Licensing of rental properties is uncollected

### Suggested Approaches:

- Monitor classified ads for rental properties
- Cross-reference Basic Business License and Office of Tax and Revenue (OTR) databases
- Require realtors, agents and property managers to verify that properties are properly licensed



# Nuisance Properties

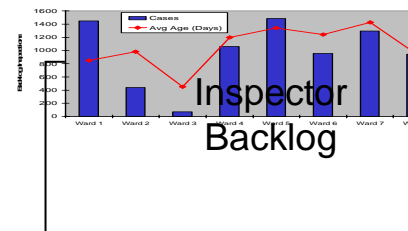
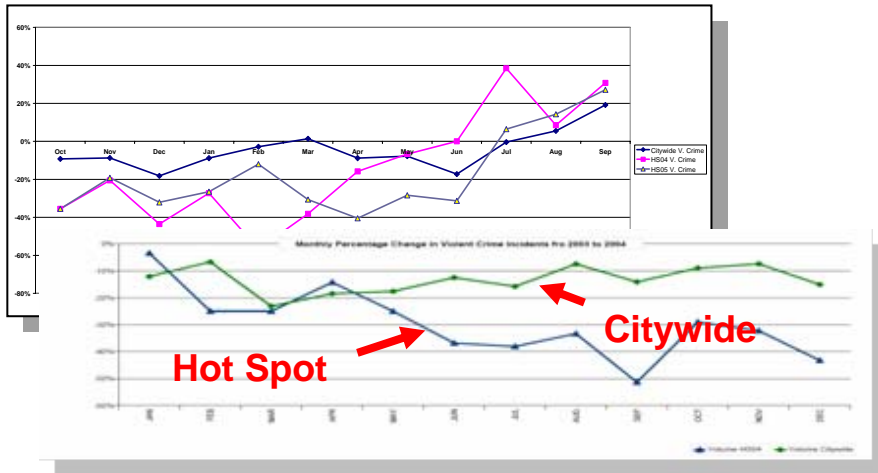
911/311 Calls for Police Service		Arrests/Charges		Mayor's Call Center (727-1000)	
Disorderly	37	UCSA Distributing Cocaine	4	Street Cleaning	1
Assault/Simple	10	UCSA Possession Marijuana	3	Parking Enforcement	1
Drug Complaint w/o Look out	8	Possession Open Container of Alcohol (POCA)	3	Parking Sign Replacement	1
Family Disturbance	8	UCSA Possession Drug Paraphernalia	2		
Investigate the Trouble	7	Unlawful Entry on Property	2		
Domestic Violence Assault	5	Probation Violation	2		
Other	4	Parole Violation	2		
Unauthorized use of a Controlled Substance	4	UCSA Possession Heroin	2		
Unlawful Entry	3	UCSA Possession Cocaine	2		
See Complaint	3	UCSA Possession Cocaine (Crack)	2		
Assist	2	UCSA Distribution Cocaine (Crack)	2		
Burglary	2	Assault Simple in Menacing Manner	1		
Damage to Property	2	UCSA CSA PWID Cocaine	1		
Destruction of Property	2				
Local Alarm	2				
Theft Stolen Auto	2				
Suicide	1				
Theft Less \$250					
Unconscious Person	1				
Woman With	1				
SickMo	1				
Check on the Welfare	1				
<b>Crime Incident Reports (ASAP)</b>					
Theft	1				
Burglary	1				



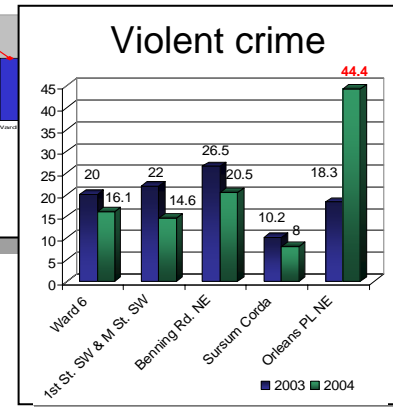




# Business Intelligence



Unrecognized anomalies



Cycles/Trends



Cross-walking data sets, identifying patterns, quantifiable methods



# Data Resources

With help from DCGIS and other Agencies we were able to add:

- **Arrests and Charges (updated every 4 hrs)**
  - This is the first set of data in DCStat that provides Drug and Prostitution related activities in the District
- **Additional Mayor's Call Center Service Request Problem Groups (updated every 5 minutes)**
- **Board of Zoning Administration Servers (available when a change is made)**
- Through a direct connection to BZA we are serving you the following datasets:
- **Added Dun&Bradstreet points (updates are made on quarterly basis)**
- **Other additions include:**
  - Added Topography
  - Added DPW Blue Plains Lot
  - Added Historic Districts
  - Added New Baseball stadium
  - Added BIDs – Business Improvement Districts
  - Added Neighborhood Clusters
  - Added Commission of Fine Arts jurisdiction
  - Added RestoreDC areas
  - Added Shipstead-Luce area—one of the Commission of Fine Arts jurisdictions
  - Added Dun&Bradstreet points
  - Added Metro Station entrances
  - Added Embassies
  - Added polling places
  - Added real property sales points
  - Added 2005 Warmspots
  - Added Federal points
  - Added Fire Hydrants



# Application Resources

SR No.	Type	Address	Request Date	Status
761011	Abandoned Auto	630 KEEFER PL NW	Aug 30, 2004	OVERDUE OPE
698486	Abandoned Auto	510 NEWTON PL NW	Apr 28, 2004	OVERDUE OPE
637718	Abandoned Auto	725 PARK RD NW	Mar 03, 2004	OVERDUE CLO
693750	Abandoned Auto	618 KENYON ST NW	May 18, 2004	OVERDUE CLO
743022	Abandoned Auto	510 NEWTON PL NW	Aug 06, 2004	OPEN
627651	Abandoned Auto	3601 WARDER ST NW	Feb 11, 2004	CLOSED
753447	Abandoned Auto	700 PARK RD NW	Aug 20, 2004	CLOSED
695656	Abandoned Auto	633 KEEFER PL NW	May 20, 2004	CLOSED
640682	Abandoned Auto	623 NEWTON PL NW	Mar 09, 2004	CLOSED
731566	Abandoned Auto	698 NEWTON ST NW	Jul 13, 2004	CLOSED

Address Stats for:

Address	0441 4th Street NE	Show Nearby...
SSL	0532 0020	
Owner(s)	District of Columbia and Wells Fargo Delaware	
Service Requests	Open 999	Last mm/dd/yy
	Closed 999	Last mm/dd/yy
Inspections	Open 999	Last mm/dd/yy
	Closed 1	On mm/dd/yy
Complaints	Open 999	Last mm/dd/yy
	Closed 999	Last mm/dd/yy
DCRA Vacant	No	Closest...
Top Assessment	1,234,546	
Crime	Violent 999	
	Property 999	



- NeighborhoodView (<http://dcstat.in.dc.gov/nv>)
- MobileView (<http://dcstat.dc.gov/mv>)



# Demo

- MobileView
- NeighborhoodView



# Future

- Executive Briefings
- Ongoing expansion of data sets
  
- MobileView 2
- NeighborhoodView 2
- ExecutiveView
- ResidentView



Thank you

Our Next DC GIS Steering Committee Meeting:

Thursday, March 16, 2006, at 1:00 p.m.,  
Conference Room TBD, 441 4th Street NW.