



DC GIS Steering Committee Meeting

June 1, 2006

Barney Krucoff
GIS Director
Office of The Chief Technology Officer
Barney.Krucoff@dc.gov
202-727-9307
www.dcgis.in.dc.gov



Agenda

Introductions – Barney Krucoff

DC GIS News – Barney Krucoff

- Web Site Update
- New backend systems
- New Agency GIS Web Sites
 - DCPS Boundary Information System
 - OLBD Enterprise Zone Look-up
- GIS Budget Update

Data Report – Mario Field

- High resolution public domain Orthoimages
- Routing Reference Network
- Pictometry
- Layer Classification Schema

Training Report – Tim Abdella

Agency Presentation:

- DDOT Public Space Management Administration – Jose Colon

Our Next DC GIS Steering Committee Meeting has been scheduled
Thursday, August 3, 2006, at 1:00 p.m., Conference Room TBD
441 4th Street NW.



New Items

- Revisions to today's agenda
- Major projects underway
 - Ortho update
 - Planimetric update
 - New backend systems server consolidation
 - Vector property map
- Major projects coming
 - ESRI Portal Tool Kit
 - Extending vector property map to public lands



New Items

- **New light weight web sites**

- DC.gov “How to reach us” pages
- Office of Local Business Development (Enterprise Zone Look-up)
- DC Public Schools (Boundary Information System)
- Hosted Point Picker
 - [Click Here](#)

- **New Heavier wait web sites**

- MPD Crime Data
 - http://10.128.92.125/mpd_crime/presentation/disclaimer.asp
- DC Atlas “All in one”
 - http://10.128.92.104/dcgis_allservices/viewer.htm



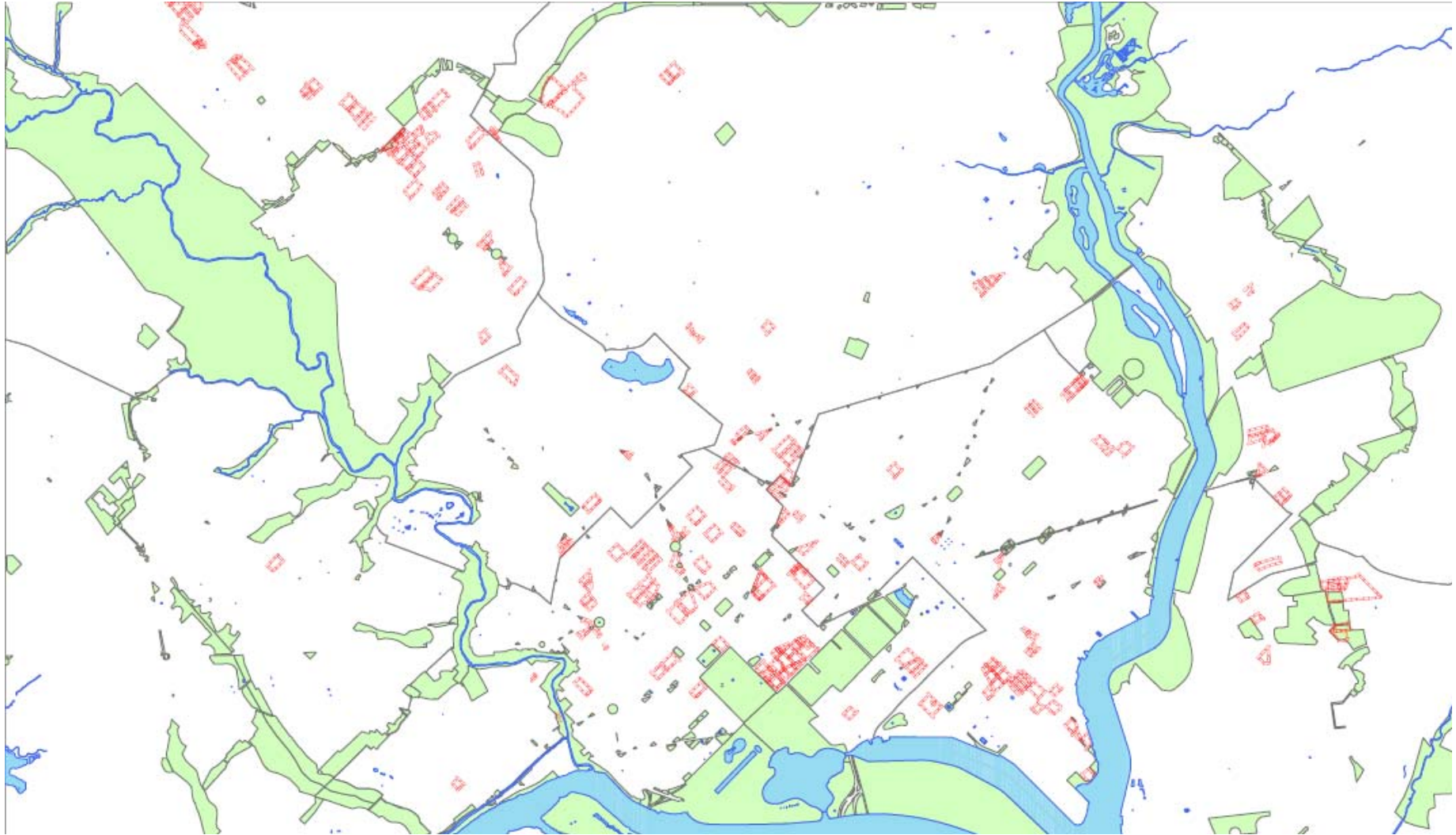
Vector Property Map Progress & Issues

- The good news
 - All of the 4867 Squares representing approximately 182,000 lots of the Vector Property Map have been vectorized, QA/QC'd, all have been corrected.
 - Now our way through the updating of this database with changes made from October 2003 until September 2005. The updates for approximately 70% of the geodatabase have been completed and the vectorization vendor is correcting the errors found during QA/QC.
 - Hand off to DCRA and OTR, the VPM team has turned its attention toward the GIS and VPM Maintenance Application training for agency personnel. Training planned for weeks of August 21 thru 25th and August 28th thru September 1st.



VPM Progress & Issues

- Issues 1: 171 Squares are known to require best fits.





VPM Progress & Issues

- Issues 2: Systematic error in delivery 4 through 11.
 - Recorded bearings are in Degrees Minutes and Seconds
 - Computed bearings are in Decimal Degrees
 - Some lines were entered incorrectly during COGO entry. The errors are small and occur in minutes and seconds only, but the longer the line the greater the error becomes.
 - Approximately 7000 lines on the exterior of squares are known to have this problem.
 - The area of lots and squares is not significantly changed.
 - Negotiations with the vendor are ongoing.



Budget Issues

- Talked about Memo
- Capitol funding
- Trying to play PC
- Some additional money has come to light
- Unable to sustain new data projects
- Keep systems going
- Training continue



Backend Server Presentation

- Zhen Lo
 - Demonstration



DC GIS Data Status Report

Mario Field
DC GIS Data Team Lead



Updated DC GIS Data

- African American Heritage Trail Site
- Business Improvement District
- Bike Lane
- Bike Trail
- Bike Route – Signed
- Crime Focus Area
- Digital Globe Satellite Imagery (2/06)
- Fire Alarm District
- Fire Battalion Area
- Fire Station
- Gas Station
- Homeless Service
- No Fly Zone
- Other Bus Line
- Other Bus Route
- Waterbody



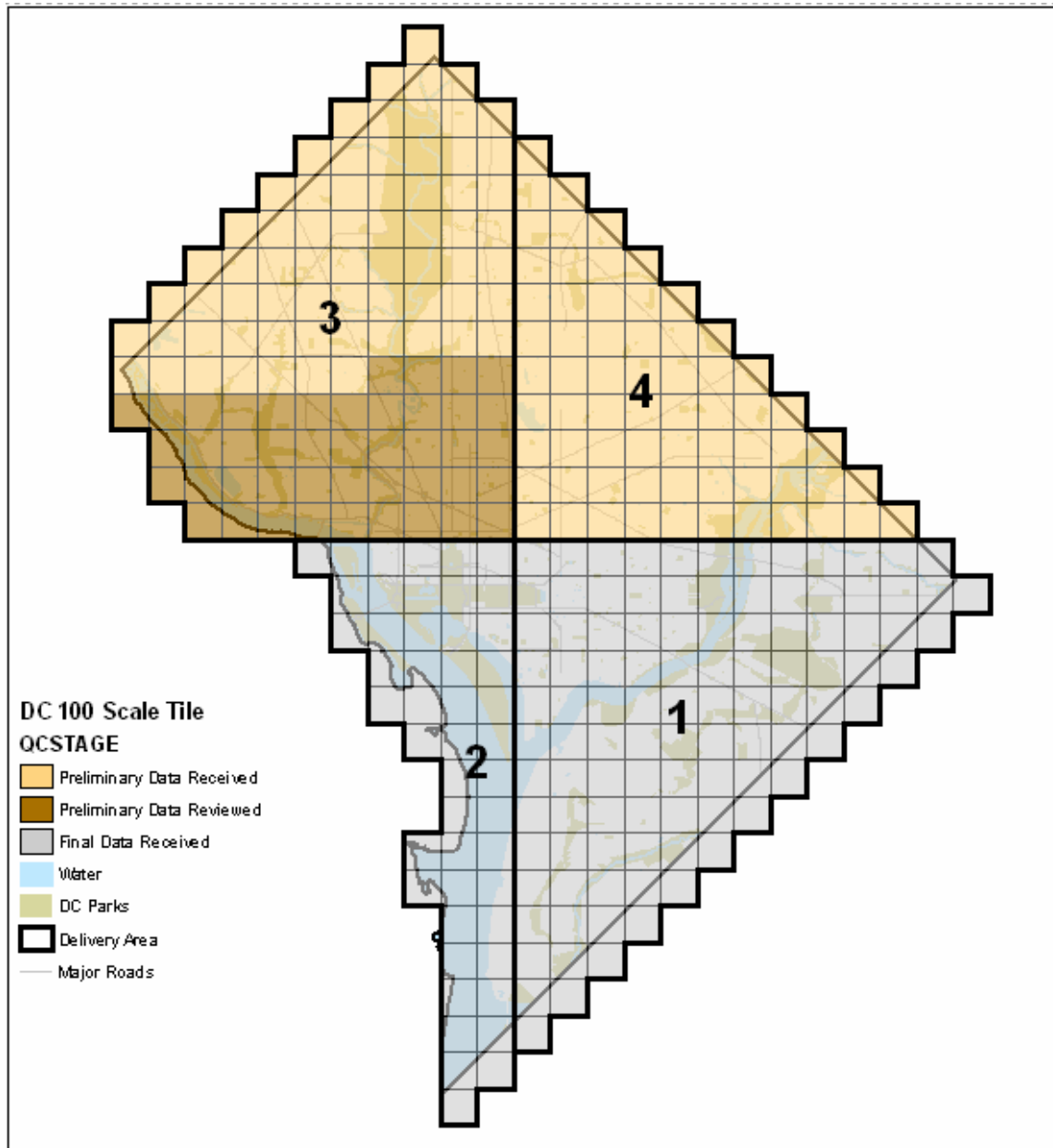
Current DC GIS Data Update

- Address Point (MAR)
- Bus Line
- Census Data (including Ward level)
- District Agency
- Embassy
- Homeless Service
- New Community Candidate
- New Community Selected 2006
- Point of Interest
- Street Centerline
- Routing Reference Network
- Underground Storage Tank
- University

» June 2006 publication

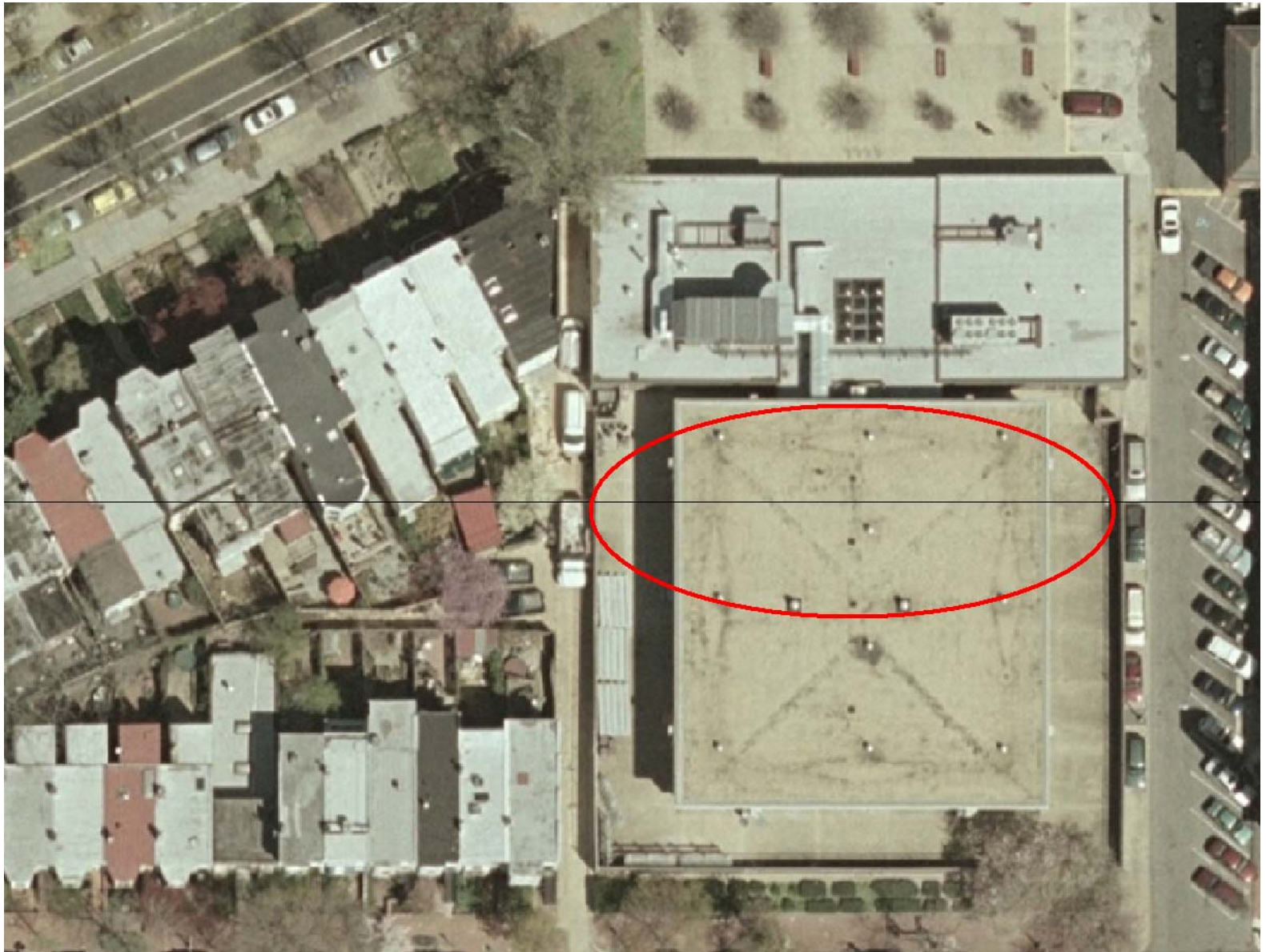


Planimetric Update Status





Orthophoto Error (Example)



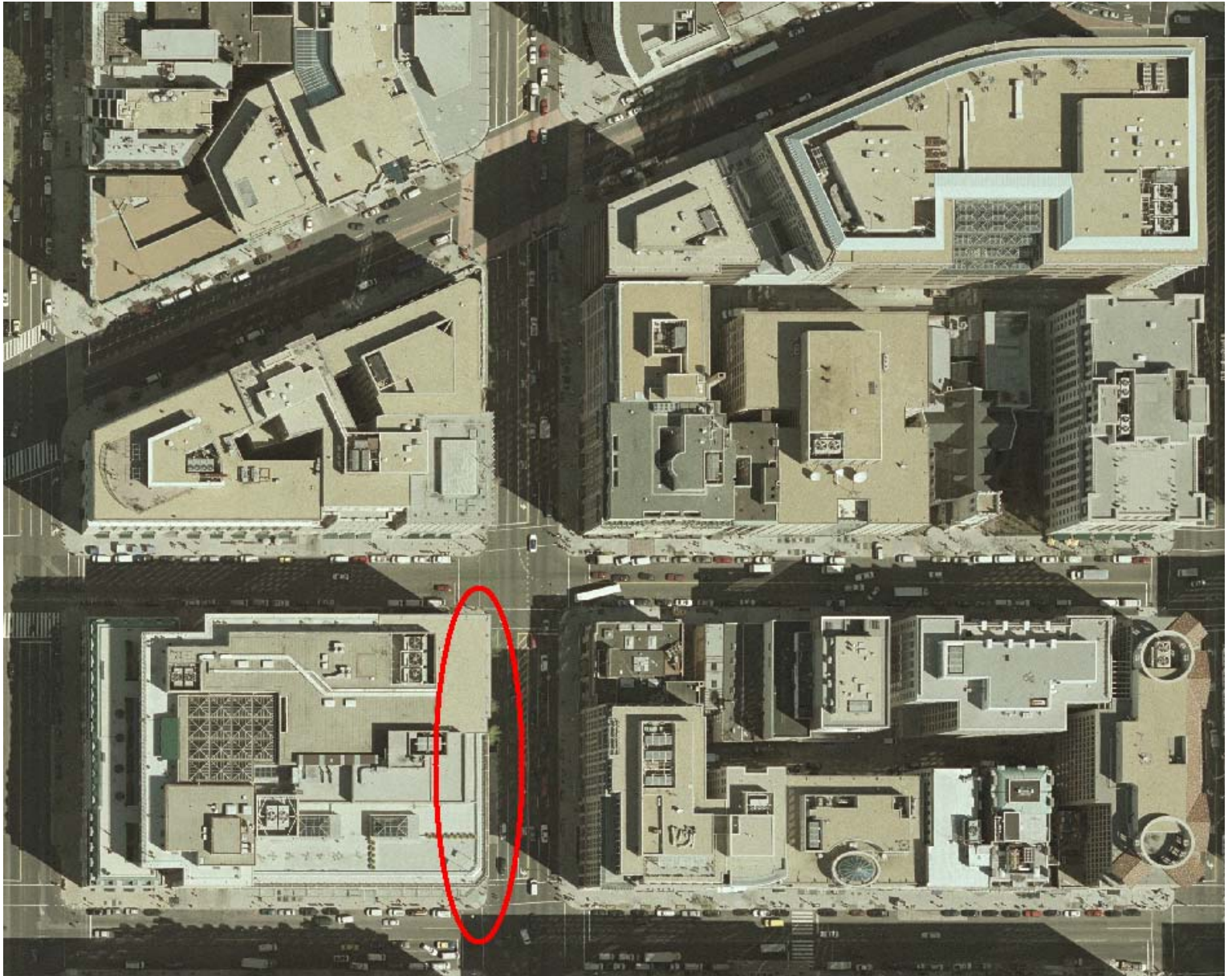


Orthophoto Error (Example)





Building Lean





Better Leaf-Off

1999



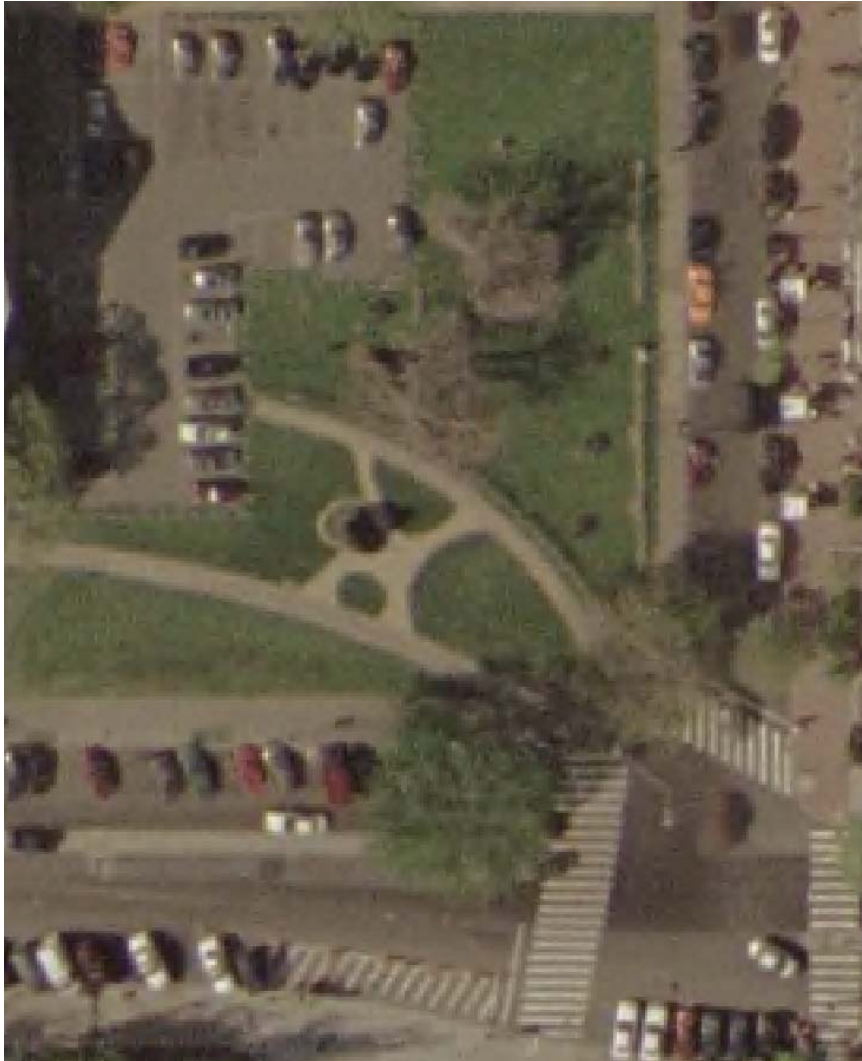
2005



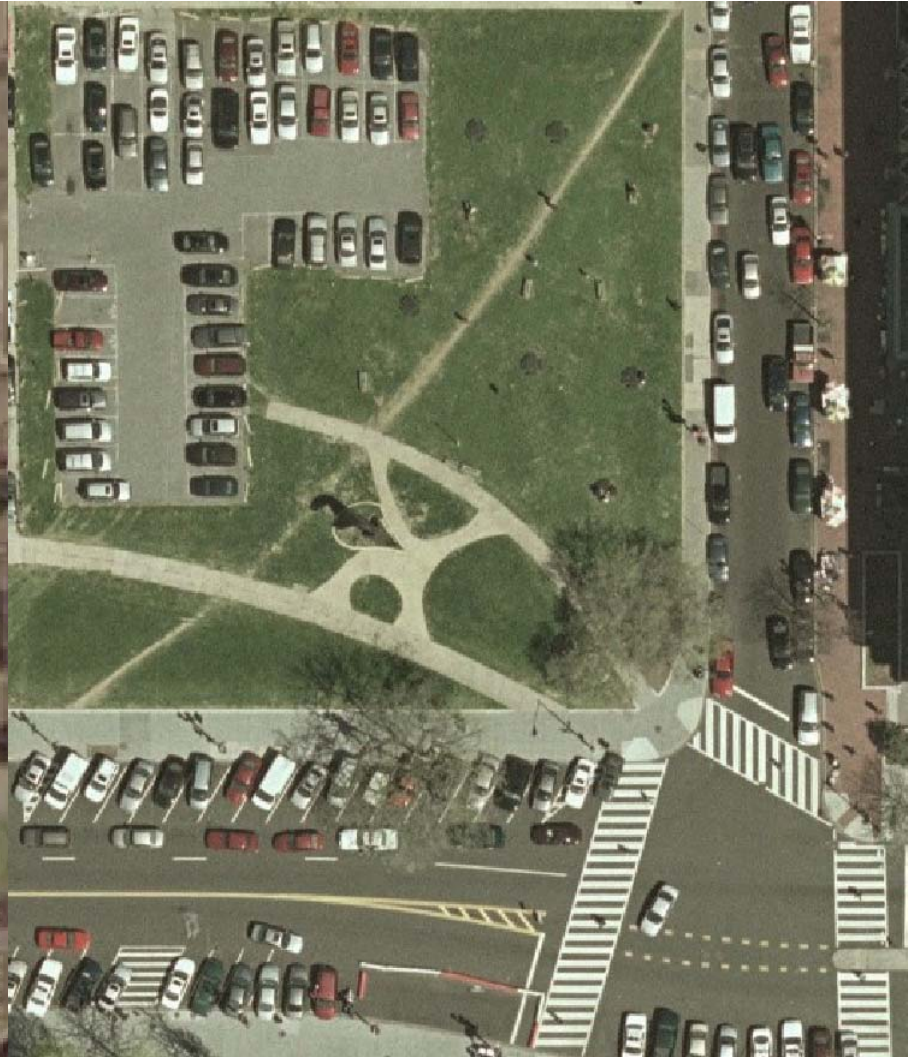


Better Resolution

2002



2005





Planimetric Update Status

- **Orthophoto Delivery**
 - Issues with orthos delayed acceptance
 - If final orthos accepted 6/2
 - Then available week of June 19th
- **Planimetric Delivery**
 - End of July
 - Will be public domain



Pictometry

- **Flown March 22, 2005**
- **Redelivery with better contrast and color balance**
- **Distribution: Digital Data District only, hard copy and PDF public.**
- **Available through DC GIS Toolbar in Citrix hosted ArcGIS**



Routing Reference Network

- **DDOT, DPW, and OCTO effort**
- **Roadway Junction (node)**
- **Roadway Segment (segment)**
- **Turn Restriction Survey**
 - Directionality (One-Way)
 - Truck and Vehicle Restrictions and Closures
 - Physical or Legal Turn Restrictions
- **Functional Class View for RouteSmart**
- **Most Detailed Routing Data available for DC**
- **Currently completing metadata**



Layer Classification

- **Schema to classify DC GIS data**
- **Standardize classification across DC GIS applications**
 - DC Atlas
 - DC GIS Toolbar – Add DC Data Themes
 - Catalog Search – Metadata Server
- **Most Categories from the International Organization for Standardization (ISO) metadata standard**



Layer Classification

- Administrative and Political
- Basemap
- Business and Economic
- Cultural and Society
- Demographic
- Education
- Elevation
- Environment
- Health
- Historic
- Imagery
- Land Planning
- Location
- Property
- Public Safety
- Recreation
- Transportation



DC GIS Training Report

Tim Abdella
GeoSpatial Education Director



CWD Course Report

- All Classes continue to be **full!**
- The “Managers” class should be thought of as the first “Introduction” or “Overview” course
- e-mail sent to all Training Coordinators describing the classes, goal to advise potential students
- Single largest suggestion / complaint:
 - Classes need to be longer





DC GIS Education Newsletter

- New Global Distribution List
 - Managed by OCTO Enterprise Directory Services
 - **800** Qualified (real) recipients
 - Adding to it everyday (DC employees / contractors only)
 - Has been “locked” down
 - After angel incident.
 - Barney, Mario, Cheryl, Myself
 - Next Issue released tomorrow, June 2nd
 - The MAR Issue



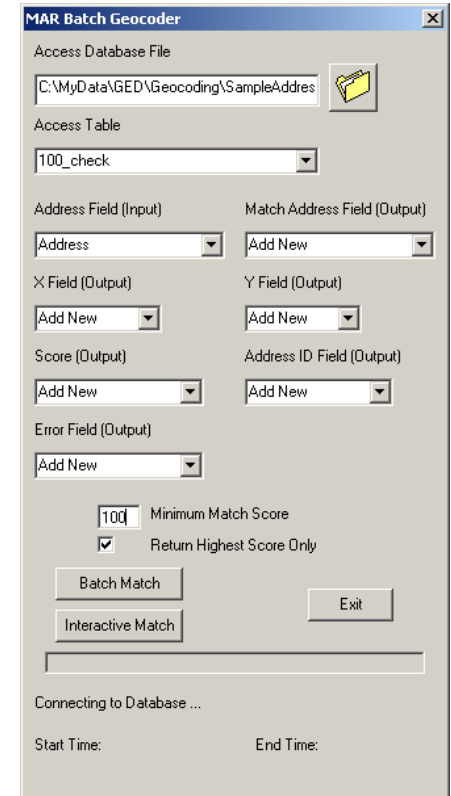
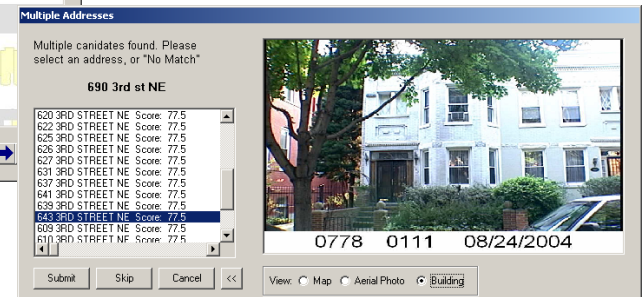
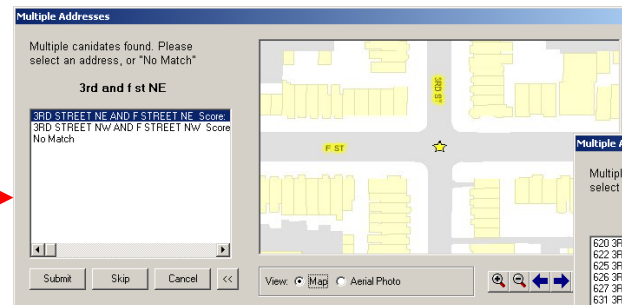
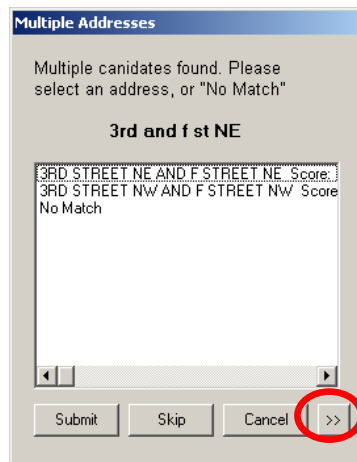
Agency Support

- Disseminate and Demystify GIS
- Custom Training held at DOH – EHMSA
- DCRA Vector Property Map Training
 - Training held last 2 weeks of August
 - Material Development Last 2 Weeks of July



MAR Spotlight

- Dedicated Newsletter issue
- Customized ESRI Locator
- New Batch Geocoder
- Updated Documentation
- New Web [page](#)



Demonstration



Q&A

Timothy L Abdella

GeoSpatial Education Director

Office of the Chief Technology Officer

441 4th Street, NW

Washington, DC 20001

tim.abdella@dc.gov

202-727-4946 Office

716-308-0000 Cell

Thank you



Thank you

Next DC GIS Steering Committee Meeting:

Thursday, August 6, 2006

at 1:00 p.m.

Conference Room TBD

441 4th Street NW