



CUSTOMER SERVICE. ACCOUNTABILITY. EFFICIENCY. SECURITY.



GIS STEERING COMMITTEE

6/20/2017

Hosted by the Office of the Chief Technology Officer

open.data@dc.gov





CUSTOMER SERVICE. ACCOUNTABILITY. EFFICIENCY. SECURITY.

AGENDA

- **Welcome, Data Program News & Updates**
Barney Krucoff, Chief Data Officer, Office of the Chief Technology Officer
 - GIS Executive Committee Election Results
 - Agency Data Officers
 - Enterprise Data Inventory
- **Securing Web Services and AGS 10.5**
Julie Kanzler, PM for Data APIs and Applications, Office of the Chief Technology Officer
 - Moving to HTTPS://
 - ArcGIS Server 10.5 Progress
- **2017 Orthophotography and Planimetric Data**
Matthew Crossett, GIS Project Manager, Office of the Chief Technology Officer
 - Quick Update
- **MPD and DDOT Crash Data**
James Graham, GIS and Applications Manager, District Department of Transportation
 - Drill-down Details
- **Open Data DC with New Sites**
Alex Santos, GIS Projects Analyst, Office of the Chief Technology Officer
 - Shared Values
 - Agency Initiative Sites
- **Data Report and Inventory**
Mario Field, Data Curation Project Manager, Office of the Chief Technology Officer





CUSTOMER SERVICE. ACCOUNTABILITY. EFFICIENCY. SECURITY.

GISSC EXECUTIVE COMMITTEE ELECTION

Candidates:

- Charlie Richman

Associate Director and Chief Information Officer at the Office of Planning

- James Graham

GIS and Applications Manager for District Department of Transportation

- Matthew Holden

Zoning Data Coordinator for the DC Office Zoning





CUSTOMER SERVICE. ACCOUNTABILITY. EFFICIENCY. SECURITY.

GISSC EXECUTIVE COMMITTEE ELECTION

Congratulations:

- Matthew Holden (DCOZ)
- James Graham (DDOT)

The Executive Committee under the leadership of the chair establishes priorities and identifies issues that must be addressed by the full GISSC.





CUSTOMER SERVICE. ACCOUNTABILITY. EFFICIENCY. SECURITY.

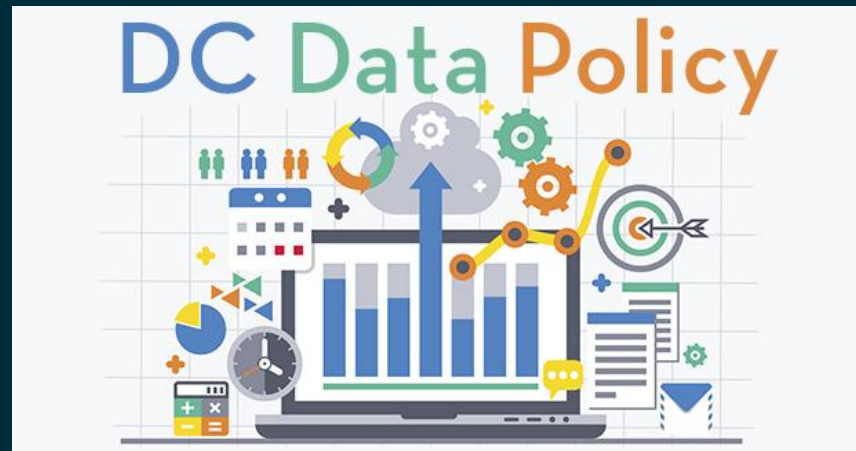
AGENCY DATA OFFICER

Agency Data Officer (ADO) means an employee, designated by an agency head, who, in coordination with the CDO, helps ensure that the agency is implementing this policy

[DC Data Policy](#)

If not you,

- Reach out to your ADO and assist with inventory
- See handout or ask OCTO for contact



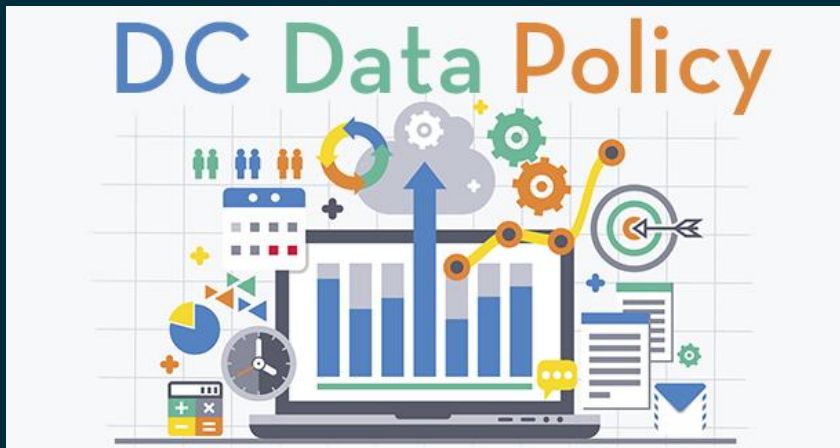
ENTERPRISE DATA INVENTORY

Catalog the District's Enterprise Data Holdings

- Launched and started in June
<https://agencyitdashboard.octo.in.dc.gov>
- Pilot agencies are DMPED, DSLBD, DBH and OVSJG
- Assist your ADO

Defined

- Enterprise dataset refers to a dataset that directly supports the mission of one or more public bodies. Typically, an enterprise dataset is stored in a named information technology system. For example, the District's general ledger is a dataset hosted in the "System of Accounts and Records." Typically, such named systems and the datasets they contain are accessible to multiple workforce members. Any named system may hold one or more enterprise datasets.





CUSTOMER SERVICE. ACCOUNTABILITY. EFFICIENCY. SECURITY.

SECURING WEB SERVICES

- All existing [Web Service Operations](#) moving to [https://](#) by **August 31, 2017**
- [Notice Sent](#) and we'll remind you
- Update your apps & API calls **now** by adding the 's' to the URL





CUSTOMER SERVICE. ACCOUNTABILITY. EFFICIENCY. SECURITY.

ALL THINGS SYSTEMS

ArcGIS Server Progress

- Desktop licenses available from license server
- Dev environment for,
 - Portal
 - ArcGIS Server
 - Geoevent Server
 - Big Data Store
- Planned upgrade <http://maps2> to 10.5 or 10.5.1 end of July

Hyper V Migration

- What is it?
- Transparent to end user

Disaster Recovery Testing

- What is it?
- Planned test in August
- Possible non-business hours outage



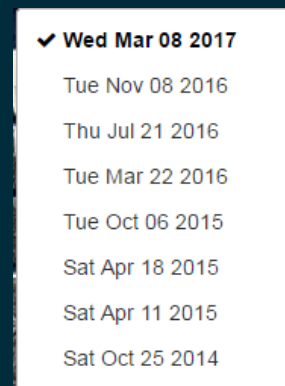


CUSTOMER SERVICE. ACCOUNTABILITY. EFFICIENCY. SECURITY.



NEARMAP

- Citywide update flown on March 8th 2017 (Wednesday)
- Gain access by visiting <http://octo.in.dc.gov/node/165505>
- Available as imagery service (Desktop), Map Viewer and in ArcGIS Online marketplace (join [Imagery Apps](#) group)





CUSTOMER SERVICE. ACCOUNTABILITY. EFFICIENCY. SECURITY.

ORTHO/PLANIMETRIC/LIDAR UPDATE

- 3" Ortho and Planimetric Updates Years 1 (FY17), 3 and 5. FY17's imagery was flown March 4th, 5th and 8th.
- FY 18 - QL2 LiDAR Acquisition, Processing and Derivatives (based on USGS Base Specs). Includes:
 - Raw Point Cloud in LAS 1.4 format.
 - Classified Point Cloud
 - Bare Earth Surface (Raster DEM)
 - Breaklines, Contours, Lidar Intensity Images, Control and Metadata
 - Likely adding classification for Bldgs and Veg

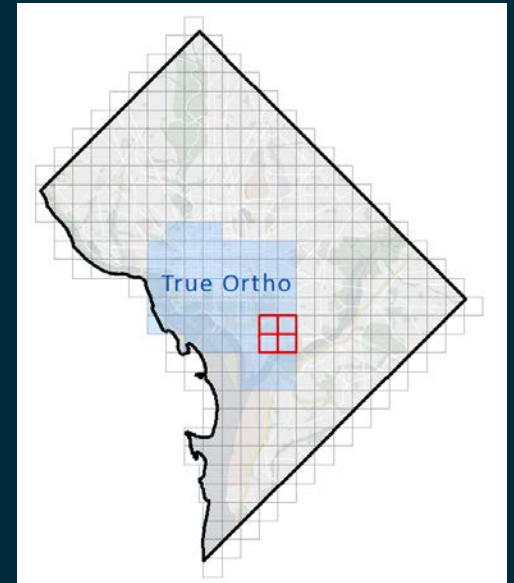




CUSTOMER SERVICE. ACCOUNTABILITY. EFFICIENCY. SECURITY.

ORTHO/PLANIMETRIC/LIDAR UPDATE

- Received:
 - Flight Plan, Acquisition Report, Ground Control, AT Report
- 3" Ortho expected available in late July
- Planimetric Updates in late September/early Oct.





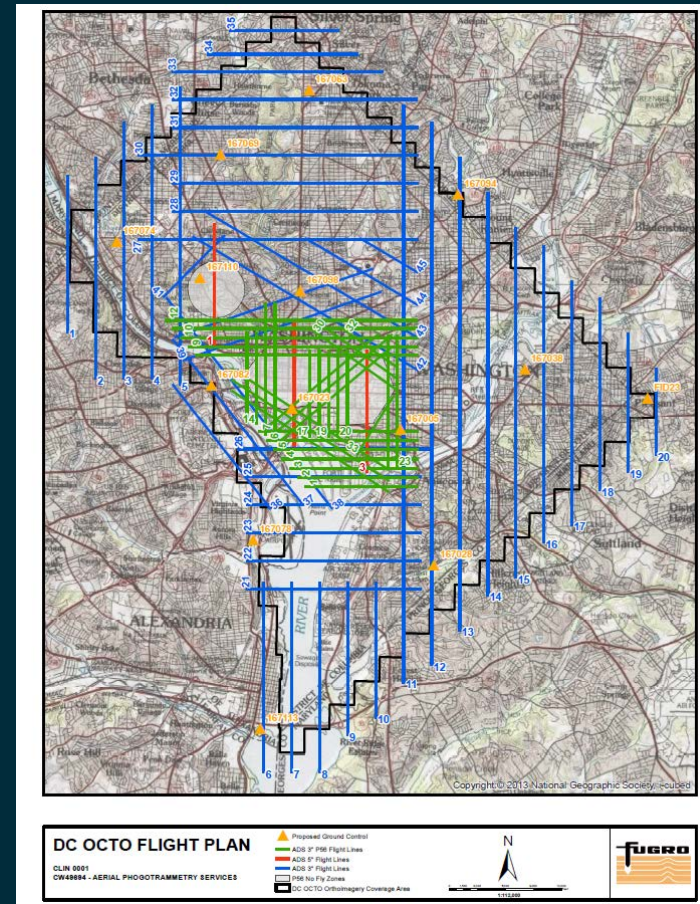
CUSTOMER SERVICE. ACCOUNTABILITY. EFFICIENCY. SECURITY.

PLANIMETRIC UPDATE

- New capture of all data layers around White House and Capitol (2015 flight void areas)
- New data capture of crosswalks
- New capture of AirPly and schema update
- New attribute code Water - Wastewater Holding Ponds

Planimetric data layers

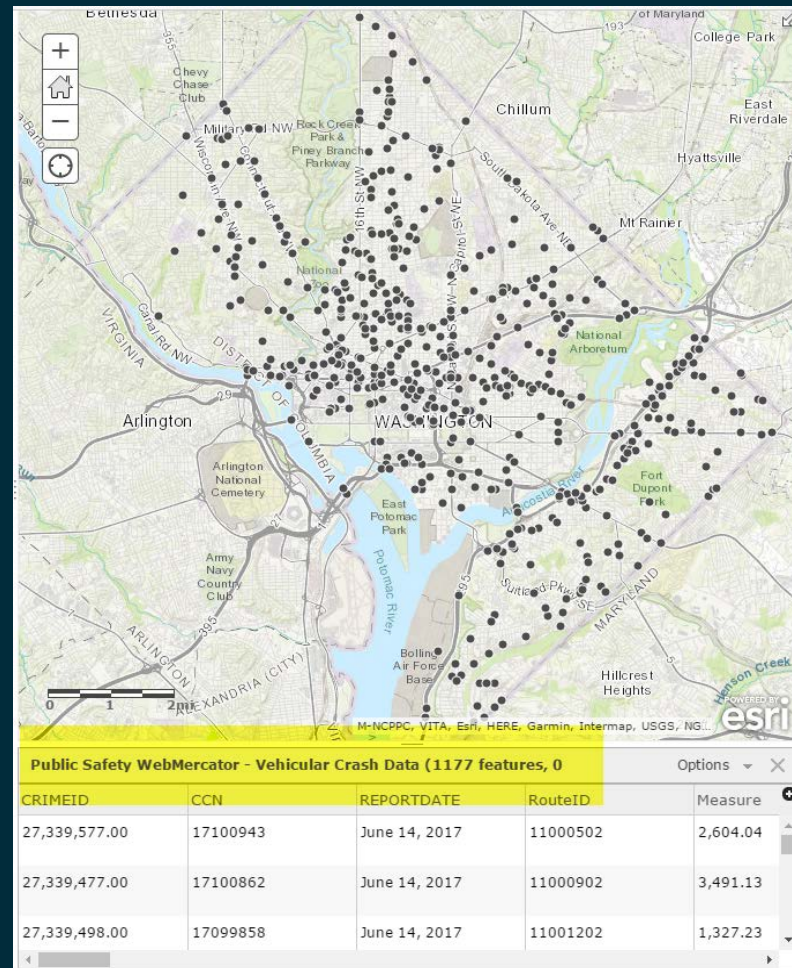
- Air Fields - new capture
- Building - update
- Bridge and Tunnel - update
- Geodetic Control - update existing layer with new (12)
- Grate - update
- Curb - update
- Guardrail - update
- Hydrography Lines - update
- Obscured Area - update
- Railroad - update
- Recreation Area - update
- Street Centerline - update
- Road - update
- Sidewalk including Stairs (update) and Crosswalks (new)
- Swimming Pool - update
- Water - update



CRASH LOCATIONS

Point Layer

- Basic summary statistics of the crash are provided. This data set is also attributed with a number of important attributes that indicate:
- The DC ward the crash occurred in.
- Summary totals of:
 - Number of Injuries (Minor, Major, Fatal), broken down by type (Ped, Bike, Car)
 - Type of vehicles involved (Ped, Bike, Car)
 - Type of impaired participant (Ped, Bike, Car driver)
- Was speeding involved?
- Nearest intersecting street name
- Distance from that intersection
- Cardinal direction from the intersection
- Also includes a supporting 'Crash Details' table





CUSTOMER SERVICE. ACCOUNTABILITY. EFFICIENCY. SECURITY.

CRASH DETAILS

- In support of the basic crash location and summary, we have also created 'Crash Details' for each crash. These provide some anonymized information about each of the persons involved in the crash (linked by CrimelD) and includes information on the following:
 - The type of participant (Driver, Occupant, Bicyclist, Pedestrian)
 - Age of participant
 - Participant was injured? (Minor, Major, Fatal)
 - What type of vehicle were they in (passenger car, large truck, taxi, government, bike, ped, etc)
 - Person issued a ticket
 - State issued license plate of car they were occupying (if vehicle)
 - Was person deemed 'impaired'?
 - Was person in vehicle where speeding was indicated?



CUSTOMER SERVICE. ACCOUNTABILITY. EFFICIENCY. SECURITY.

IMPORTANT INFORMATION ABOUT DATA

Mostly Fantastic!



Known Irregularities

- It will change!
- Open Data Issues:
 - 250 (of 417k) records with AGE<0 or AGE>100
 - Map service fails to generate aggregation statistics - restricts charts, smart mapping, other API analyses
- Legacy data issues (prior to Aug 2015):
 - Many records have no Report Date
 - Ambiguous Links between Crash, Vehicles and Persons
 - Identification of bicyclists as 'drivers'
- Crash records are often not updated with fatality info if it occurs at a later time (e.g. at the hospital)
- Many crash locations are on top of buildings. (e.g. RFK stadium)
- This and many other issues are being logged and collaboratively worked on w/MPD via github.



CUSTOMER SERVICE. ACCOUNTABILITY. EFFICIENCY. SECURITY.

OPEN DATA DC SITES

Since February GISSC Meeting

- Released in April 2017
 - Expanding with data, of course
 - Growing with PAGES →
 - Integrated links and existing content
- [District Starter Kit](#)
open source kit featuring samples for how to use DC APIs
- [Web Services](#)
run down of map and location data services featuring examples
- [DC from Above](#)
education piece on DC's aerial projects history with samples and downloads



Creating Apps



District Starter Kit



Web Services



Use APIs



Geocode



DC from Above



AGENCY INITIATIVE SITES

“...true
transparency is
educating where
possible...”
ogag.dc.gov



Primary **audience**: residents,
visitors, civic activists, and
learners of all persuasions

Shared Values

- Data visualized is data downloadable – even spreadsheets
 - If not available, let’s not show – **window shopping**.
- Increase use of existing content – more links, narratives, agency sites, other open data sites, colleague web maps/apps
- Opportunities for **engagement**
 - Open to citizen comments
 - Create **citizen buy-in** – “how is, has been or will... my say be used?”
- opendata.dc.gov **as source** – build applications from here. Let us know if you need data published.



CUSTOMER SERVICE. ACCOUNTABILITY. EFFICIENCY. SECURITY.

AGENCY INITIATIVE SITES

Under the DC ArcGIS Online Org

- Pilots
 - DDOT Vision Zero
Jonathan Rogers
 - DDOT Urban Forestry
Earl Eutsler
 - DOEE Digital Engagement
Nina Liggett



All material best when related to data, or is used to interpret value of agency data.



CUSTOMER SERVICE. ACCOUNTABILITY. EFFICIENCY. SECURITY.

Ideas for Design



- Who Speaks Data
 - Points of **direct contact** and **assigned data roles** (CPO, Agency Data Officer, GIS manager, FOIA Officer)
- Scratch Space
 - Open for citizen comments to **address the agency** on data
 - **Distributed ownership** – OCTO can't speak for agencies
- Agency produced data **used by the agency now** for operations or decision making (need not be spatial)
- Program spotlights (pages)
 - Key data initiatives, visibility and impact to residents
- Other **data going-on** events, projects, presentations and meetups
- Tools for learning and development (i.e., developers & data analyst corner)



Impacting Narratives

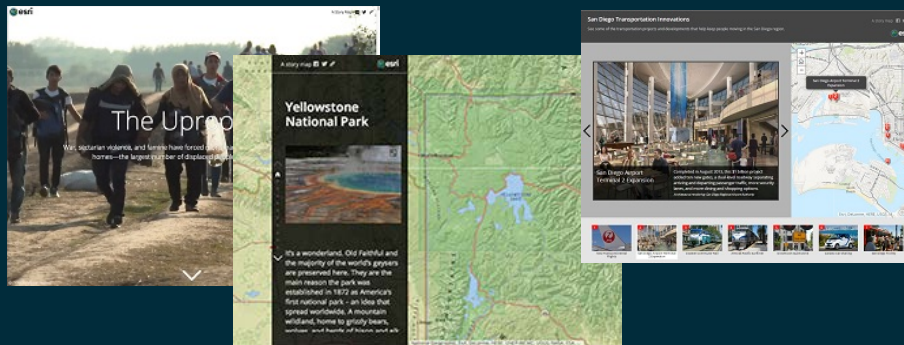
- Both Web Maps and Text
- A **story** not an essay
- Who, what, where, when but more importantly **WHY** should citizen care
- Illuminate **the problem** with data, **share the resolution** (or elicit ideas)
- It's okay to use pronouns. "We" to identify the agency, DC or the program. "You" to speak to the reader. This makes it more personal and conversational.
- Avoid speaking **robot**.

Examples: [Using Open Data DC APIs](#),
[Connect Web Services](#)

Create Apps with Story Map Templates

- [Story Map Cascade](#) – full page scrolling experience with immersive stories.
- [Story Map Journal](#) – map-based narrative organized as a set of journal entries.
- [Story Map Tour](#) – web map with geotagged images or videos and a thumbnail carousel

[See all App Templates](#)





CUSTOMER SERVICE. ACCOUNTABILITY. EFFICIENCY. SECURITY.

Ideas for Look, Feel, Style

- DC (agency) color palette, standard fonts
 - Matchy-matchy
- Usability finds that **users scroll** more than use navigation menu.
- Think Mobile (test with yours!)
- **Avoid overloading**
 - Slice information to tell specifics – one story
 - Keep graphics and visualizations from too much detail

No ~~kitchen sink apps or pages~~

If you find yourself wanting to show more, more in one view then consider making a new page





CUSTOMER SERVICE. ACCOUNTABILITY. EFFICIENCY. SECURITY.

Ideas for Governance

- Periodic review by DC's Chief Data Officer
- OCTO will be moderators at first
 - Scheduled one-on-ones with Open Data Team
- Agency open data site administrators
 - Points of contact
 - Points of editing
 - Teams will be limited
 - A critical responsibility

“...we are a team and nobody is as smart as all of us...”

Ask for peer review before going public.

gisgroup@dc.gov

[Open Data Site Editor](#)





CUSTOMER SERVICE. ACCOUNTABILITY. EFFICIENCY. SECURITY.

DATA POSTED

In the last six weeks

- Best Management Practice (DDOE)
- Cooling Center
- Camera Enforcement
- DC Property
- Early Polling Center
- Floodplain
- Great Street Grantee
- Library
- Main Street Area
- Metro (removed yellow rush+ service)
- Non Depository Location
- Notary Public
- Slug Location
- Summer Crime Initiative Area
- Ward (population counts)

Soon

- Cooling Center
- Clean Team Service Area
- Child Development Point
- DC property
- Recreation Area
- Notary Public





CUSTOMER SERVICE. ACCOUNTABILITY. EFFICIENCY. SECURITY.

REQUESTS VIA OPEN DATA

Ideas where to find?

- Historical Housing Permits
- Record of Requests in Open Data
- MPD Officer-Involved Shootings
- FEMS Response Times
- [DC Health and Dental Plans](#) (history)
- Employee Salaries and Demographics
- Government Web Analytics
- Stop Signs
- MPD Special Events Permits
- Coach Bus Parking Spots
- Vehicle Registration
- Tenant Opportunity Purchase Assistance (when tenants get first offer to buy)

These are citizen requests submitted from <http://opendata.dc.gov>





CUSTOMER SERVICE. ACCOUNTABILITY. EFFICIENCY. SECURITY.

THANK YOU FOR
JOINING US 😊

Feedback

open.data@dc.gov

