



District of Columbia
Geographic Information System
Steering Committee
May 29, 2009

Barney Krucoff
GIS Director
District of Columbia
Office of the Chief Technology Officer
Barney.Krucoff@dc.gov
202-727-9307



Agenda



- **Introductions**
- **City Administrator Expands Membership of GISSC**– Barney Krucoff
- **DC GIS News** – Barney Krucoff
- **Implementing the Strategic Plan** – Rich Grady, Applied Geographics
- **City Wide Data Warehouse Update** – Chris Marshal
- **Data Report** – Mario Field
- **Tree Canopy / Land Cover** – Jim Amerault DDOT and Jarlath O’Neil-Dunne University of Vermont



DC GIS
NEWS




Steering Committee Expanded



- Department of Consumer and Regulatory Affairs
- Department of Health
- Department of Public Works
- District Department of Environment
- Emergency Management
- Fire and Emergency Medical Services
- Homeland Security and Agency
- Metropolitan Police Department
- Deputy Mayor Planning & Econ Dev
- Office of Tax and Revenue
- Office of Unified Communications
- Office of Zoning
- Water and Sewer Authority


* Plus USGS as a non-voting federal partner.

GOVERNMENT OF THE DISTRICT OF COLUMBIA
Executive Office of the Mayor



MEMORANDUM

TO: Department Heads
Department of Consumer and Regulatory Affairs
Department of Health
Department of Public Works
District Department of the Environment
Fire and Emergency Medical Services
Homeland Security and Emergency Management Agency
Metropolitan Police Department
Office of Deputy Mayor for Planning and Economic Development
Office of Tax and Revenue
Office of Unified Communications
Office of Zoning
Water and Sewer Authority

FROM: Dan Tangherlini 
City Administrator

DATE: May 8, 2009

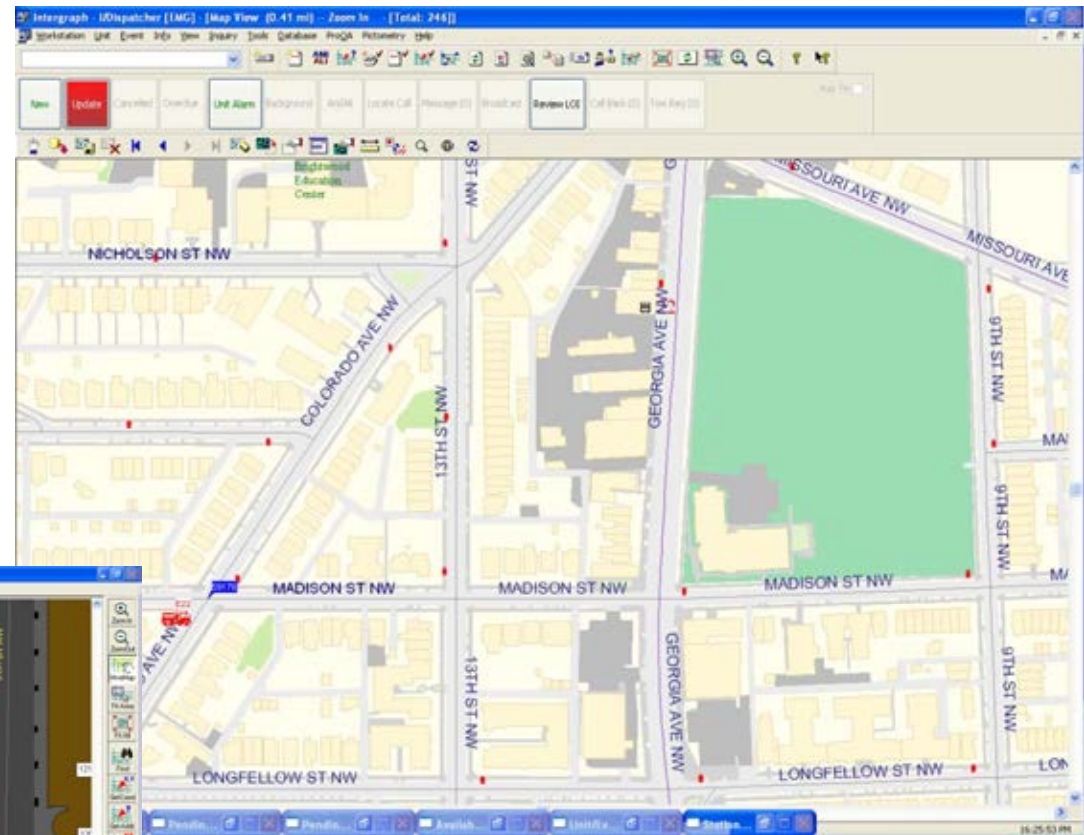
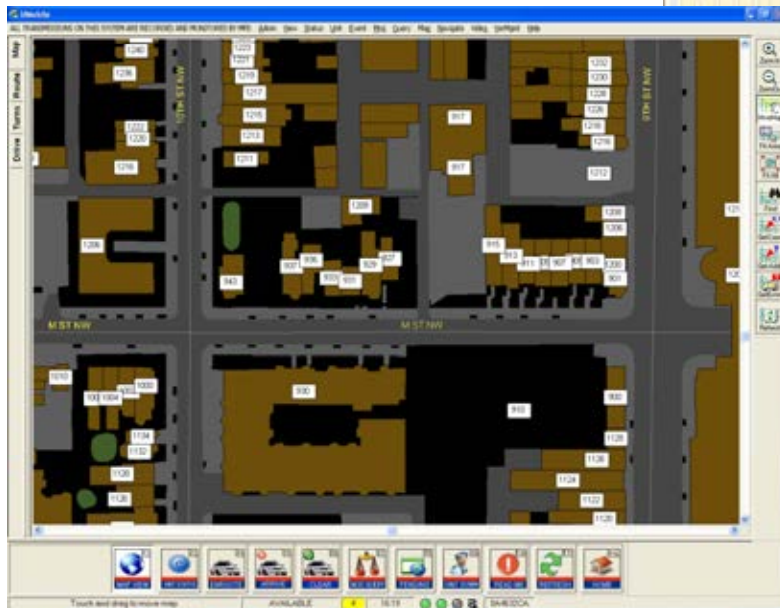
SUBJECT: Expansion of the District of Columbia Geographic Information System Steering Committee



DC GIS News



- The DC GIS Base Map is now part of the Computed Aided Dispatch (CAD aka 911) system



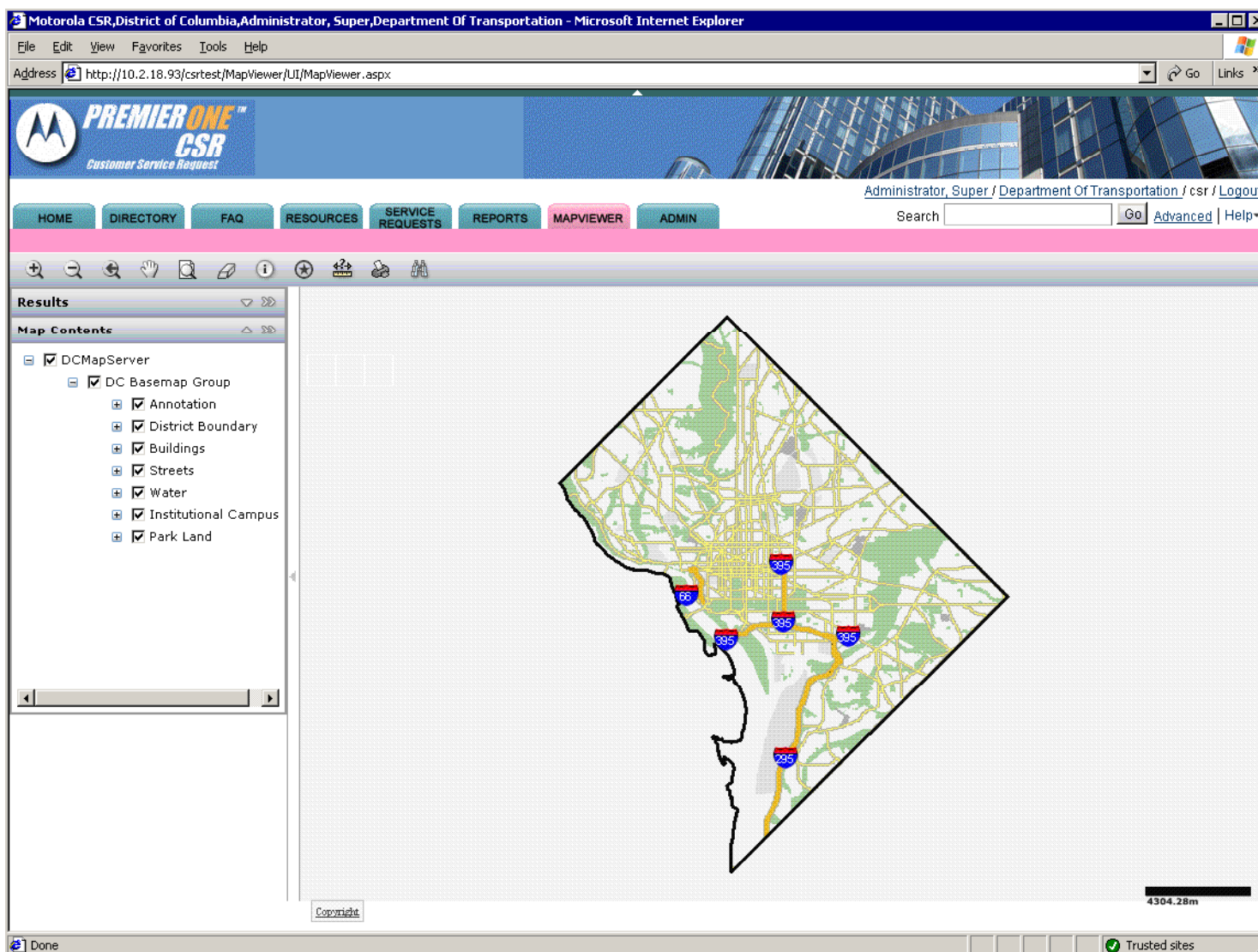
- Also in the I-mobile client in MPD and FEMS vehicles



DC GIS News

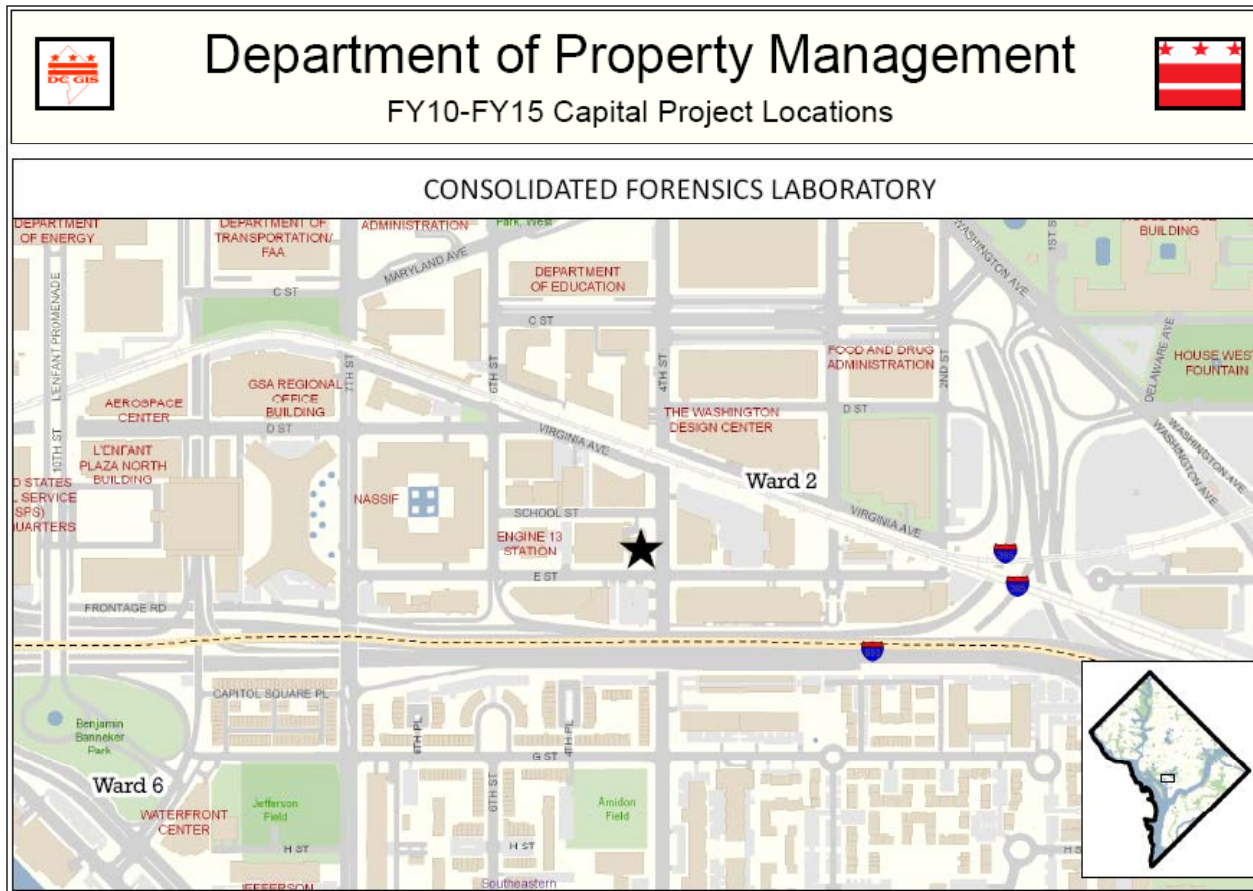


- The new 311 Service Request System





Maps & GISSC in Capital Plan



- Also new language with GISSC Role in capital plan. check pages 205 & 213

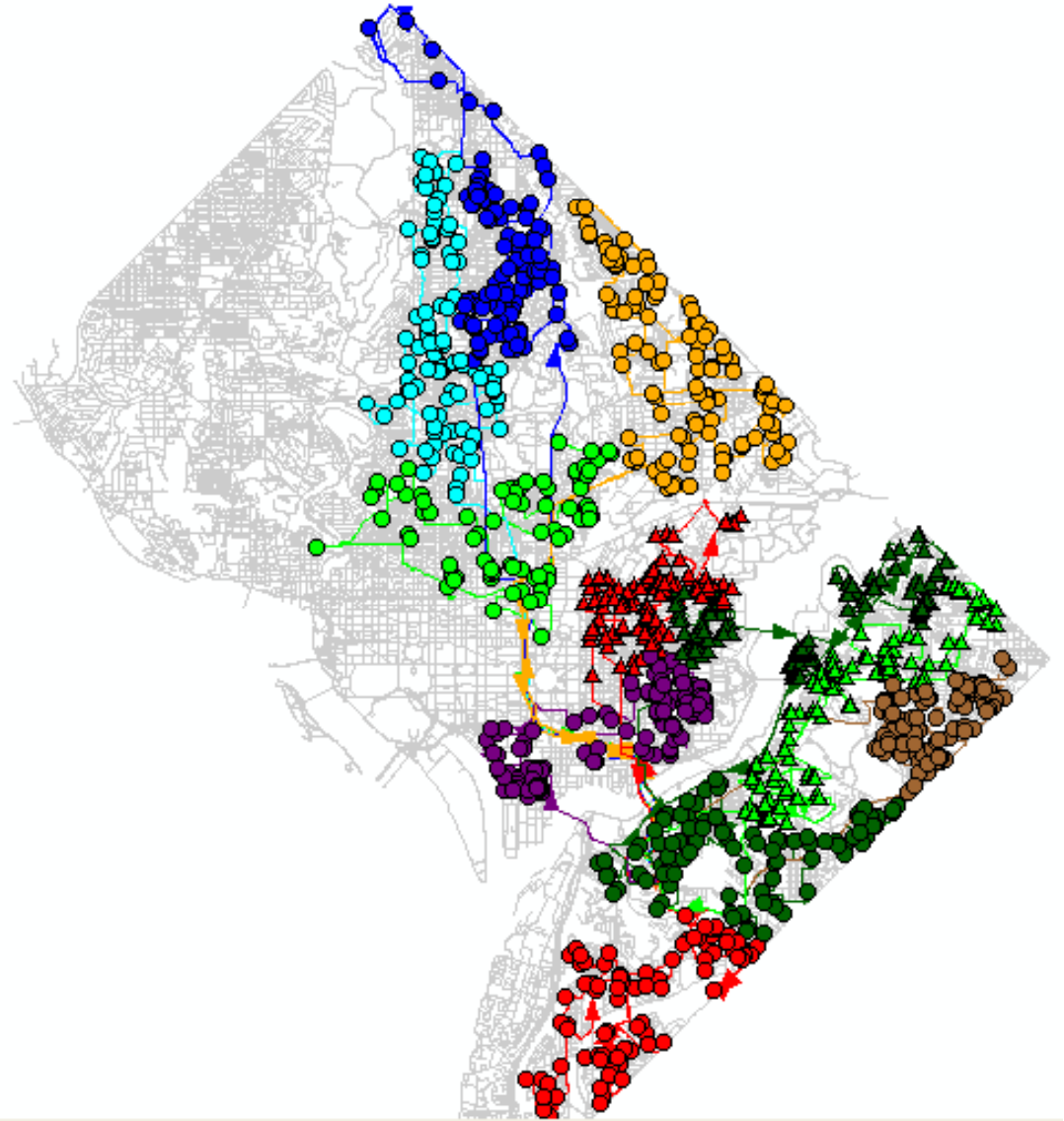
“This capital fund (N1604c) is paired with master lease fund project ZA143C. Both invest in shared applications and mapping data for District agencies that work with geographic data. OCTO coordinates and facilitates cross-agency investments through the **District of Columbia Geographic Information System (DC GIS) Steering Committee.**”



Routing for Meals on Wheels



- Office of Aging and its contractors now use GIS routing for meals on wheels
- Thanks DPW!

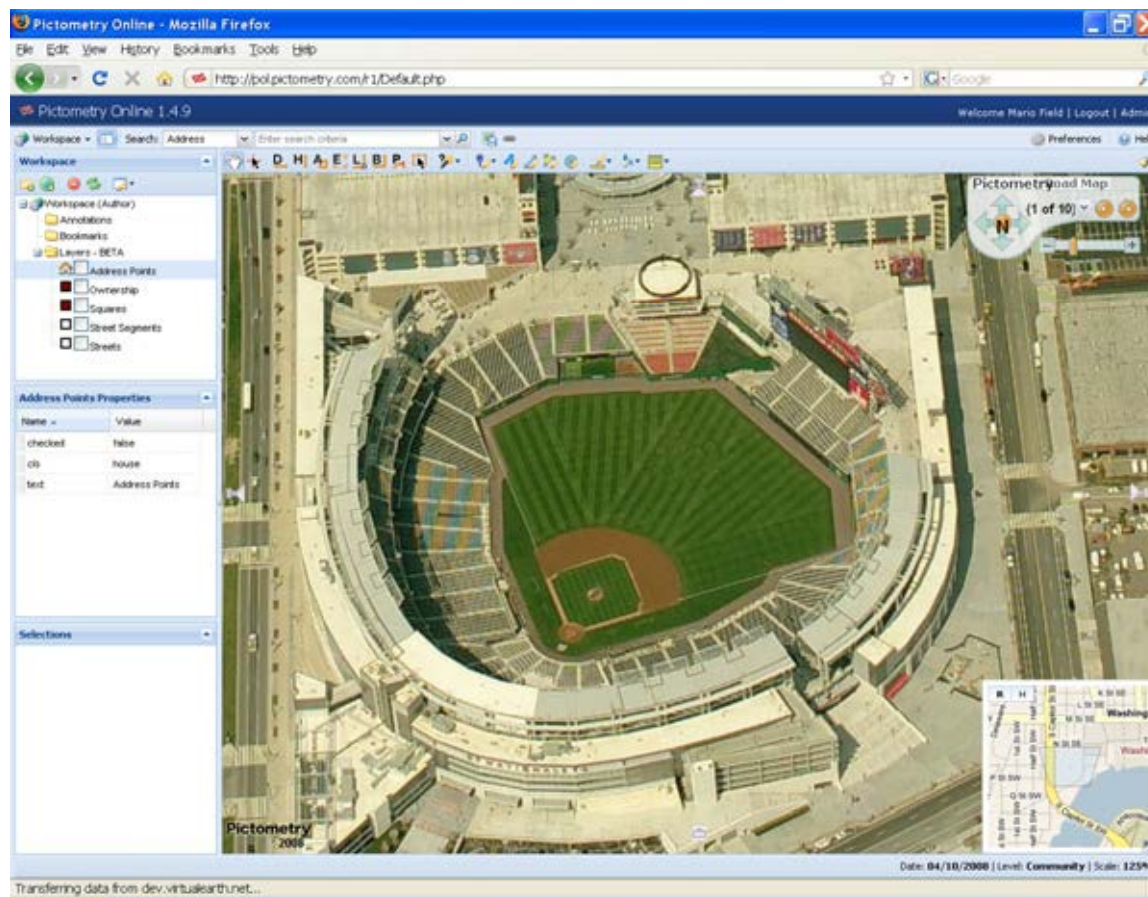




Pictometry & NAIP Update



- Pictometry spring flight successful leaf-off
- New library this summer
- Pictometry online still work in progress
- National Agriculture Imagery Program (NAIP) flying both MD and VA. DC-wide leaf-on forth band in planning stage.





Summer Youth



- DC GIS Hosting 10 Summer Youth
- Working closely with DDOT on GPS Data Collection
 - Awnings
 - Benches
 - Bicycle Racks
 - Bollards
 - Call Boxes
 - Electrical Control Boxes
 - Litter Cans
 - Mailboxes
 - Media Boxes
 - Parking Meters
 - Parking Garages
 - Planters
 - Sidewalk Cafes
 - Stairs Into Buildings
 - Street Furniture
 - Taxi Cab Stands
 - Vaults
 - Ventilation Grates
 - Wheelchair Ramps
 - Segway Rental locations
 - Tour Bus Stops
- Field Trips
 - National Maritime Heritage Foundation
 - Library of Congress
 - National Geographic
 - GeoEye
 - Office of Planning
 - WDEP
 - Coastlines



GIS for Economic Development

DC GIS Tools & “Hands on DC”



- Supporting:
 - Deputy Mayor for Planning and Economic Development (**DMPED**)
 - Washington, DC Economic Partnership (**WDCEP**)
 - Executive Office of Mayor (**EOM**)
- Place: Global Retail Real Estate Conference, Las Vegas
 - ~30,000 Attendees (developers, retail brokerage, restaurants, more!)
 - District Delegation: Mayor Fenty; Neil Albert (CA); DMPED Project Managers; Council Members Gray, K. Brown, M. Brown, Alexander, Bowser, Evans, and Thomas; and **OCTO GIS!**
- DC GIS Tools
 - Custom Identification Tools
 - Georeference Site Plans
 - All DC GIS Central has to offer!
- “Hands on DC”
 - Microsoft Surface Application
 - DC GIS Basemap, Retail Site Imagery, Narratives, Sq. Footage

All Touch Enabled – Use Your Hands!





GIS for Economic Development



REcon
THE GLOBAL RETAIL REAL ESTATE CONVENTION

spring2009 MAY17-20 • LAS VEGAS, NV





“Hands on DC”





Google (Earth) DC Plugin available soon!

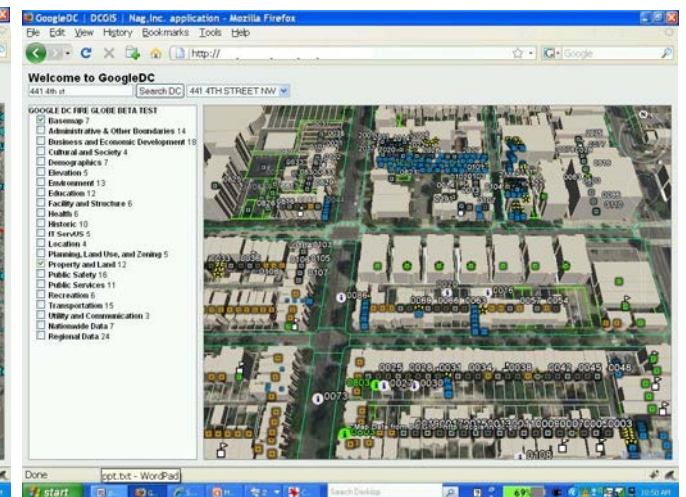
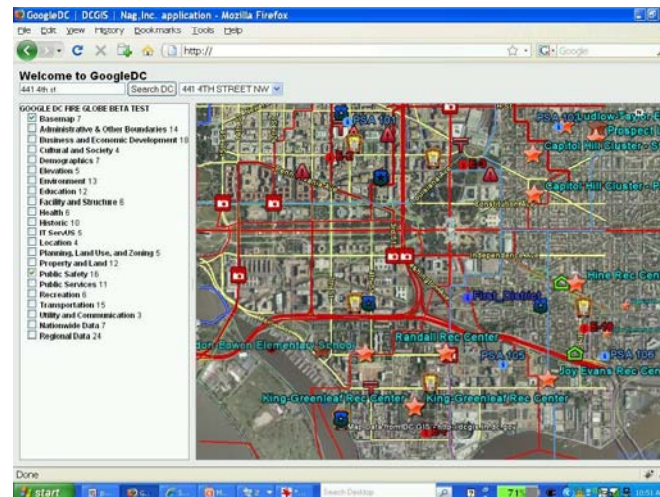
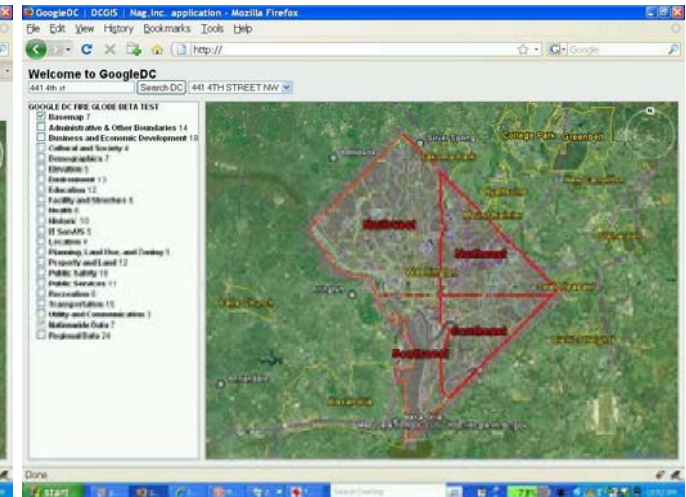
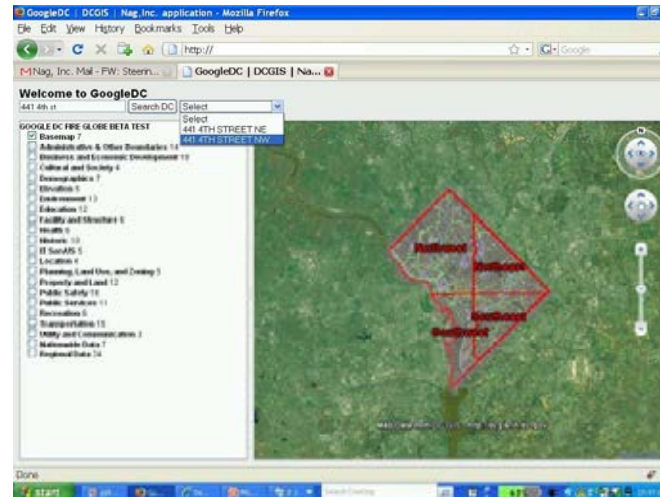


- Seamless tie-up with existing Google DC Fusion Data.

- Drill down capability for 300+ layers

- MAR Integration

- Custom secure applications on the web developed for FIRE & Public Safety

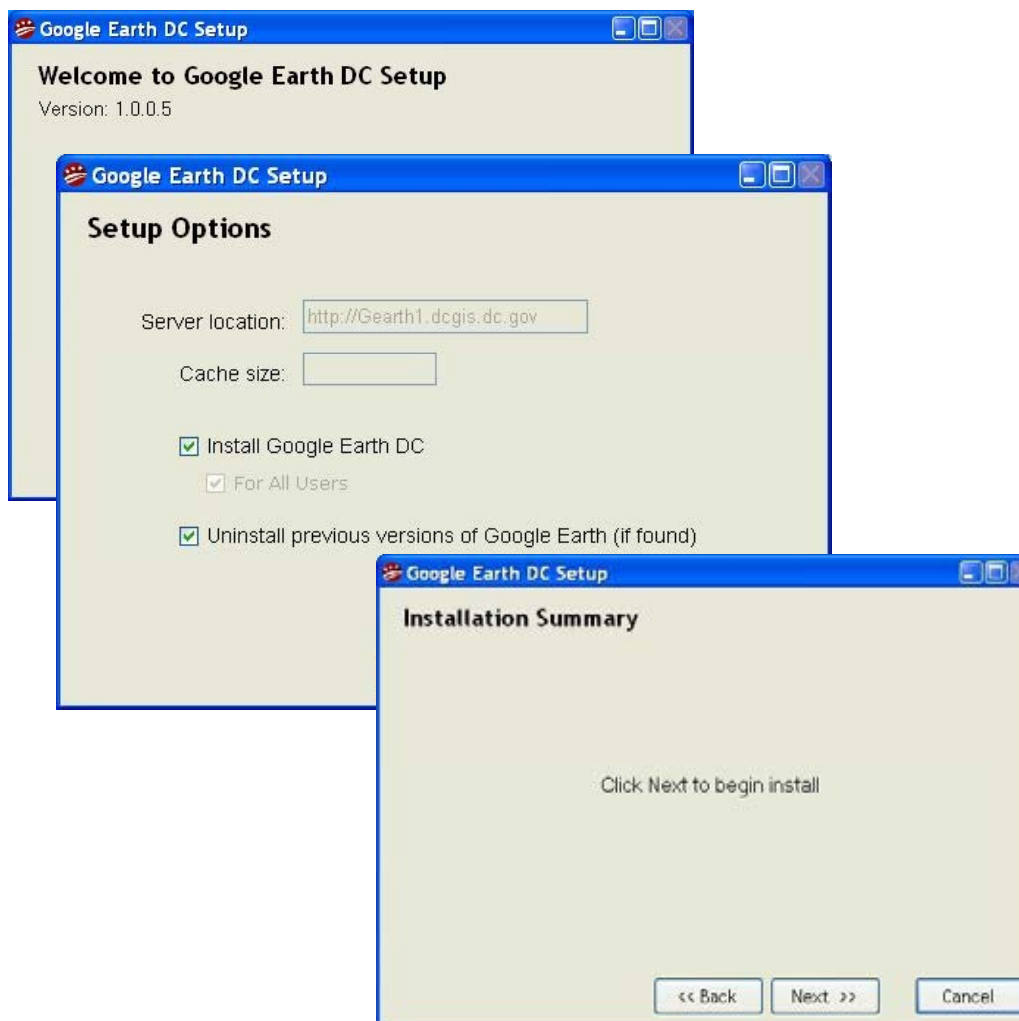




GoogleDC 5.0 deployment Package



- Upgraded Google Earth Enterprise to beta 5.0 and GoogleDC customization Package
- Automatically Un-Installs previous versions, before installing the new version.
- Both Google Earth Enterprise and customization script is rolled into one package for quick and easy deployment.





Applications in development



- WDCEP Retail Site Locator in Google Map
<http://googledc.dcgis.dc.gov/retail>
- CSOSA Sex Offender Web Site in Google Map
<http://10.2.11.29/sor>
- DC Capital Projects Map
<http://10.2.11.29/agencyapps/capital.aspx>
- DPW Trash/Recycle Pickup Date lookup
<http://10.2.11.29/trashrecyclepickup/>



Master Address Repository Residential Units



Total Unit(s): 12	
Unit	Unit SSL
101	1096 2017
102	1096 2018
103	1096 2019
104	1096 2020
201	1096 2021
202	1096 2022
203	1096 2023
204	1096 2024
301	1096 2025
302	1096 2026
303	1096 2027
304	1096 2028

Condominium – 1 18TH STREET SE

<http://dcgis.dc.gov/mar>





Master Address Repository Residential Units



What is a Residential Unit?

An individual housing occupancy which has a secondary designation. These can be apartments or condominiums. Most of these units have an interior entrance to the location.

Examples of designations include:

- 1 18th Street NE 101
- 1439 SPRING ROAD NW 302
- 4338 HALLEY TERRACE SE 1A
- 100 CHESAPEAKE STREET SE 5



Residential Units



- 185,632 records in the Residential Units
- There are an estimated 194,000 – 202,000 in DC
- Thus the Residential is estimate to be between 91.9% - 95.6% complete
- Includes fields:
 - Unit Num
 - Unit Type
 - Unit ID
 - Address ID
 - Condo SSL
 - Condo Square
 - Condo Suffix
 - Condo Lot
 - Condo Book
 - Condo Page
 - Metadata ID



MAR Update



- Major improvement in Quality of SSL Data in MAR
 - Automatic weekly update of SSL AID Cross Reference Table
 - Reviewed recommended and assigned addresses
- Updated Documentation
 - MAR Presentation
 - MAR Frequently Asked Questions (FAQ)
 - Address Anomalies
- MAR Blog: <http://dcaddresscoordinates.blogspot.com>



ESRI Geocoding Tool

- Available in DCGIS Central SDE
- Alternative to MAR Batch Geocoder which is slow in dealing with large amount of records.
- Bucket approach.
 1. MAR Geocoding
 2. Street Centerline Geocoding
 3. Regional
- Most of the settings are preset



MAR Geocoding Tool Settings



Address Locator Properties

Name:

Description:

Primary table

Reference data:

☐ Store relative path names

Fields

House Number:

Prefix Direction:

Prefix Type:

Street Name:

Street Type:

Suffix Direction:

Input Address Fields

The field containing: is recognized if it is named:

Matching Options

Place Name Alias Table...

Spelling sensitivity:

Minimum candidate score:

Minimum match score:

Intersections

Connectors: Separate connectors by a space, e.g. "& @ , /"

Output Options

Side offset: in

End offset: %

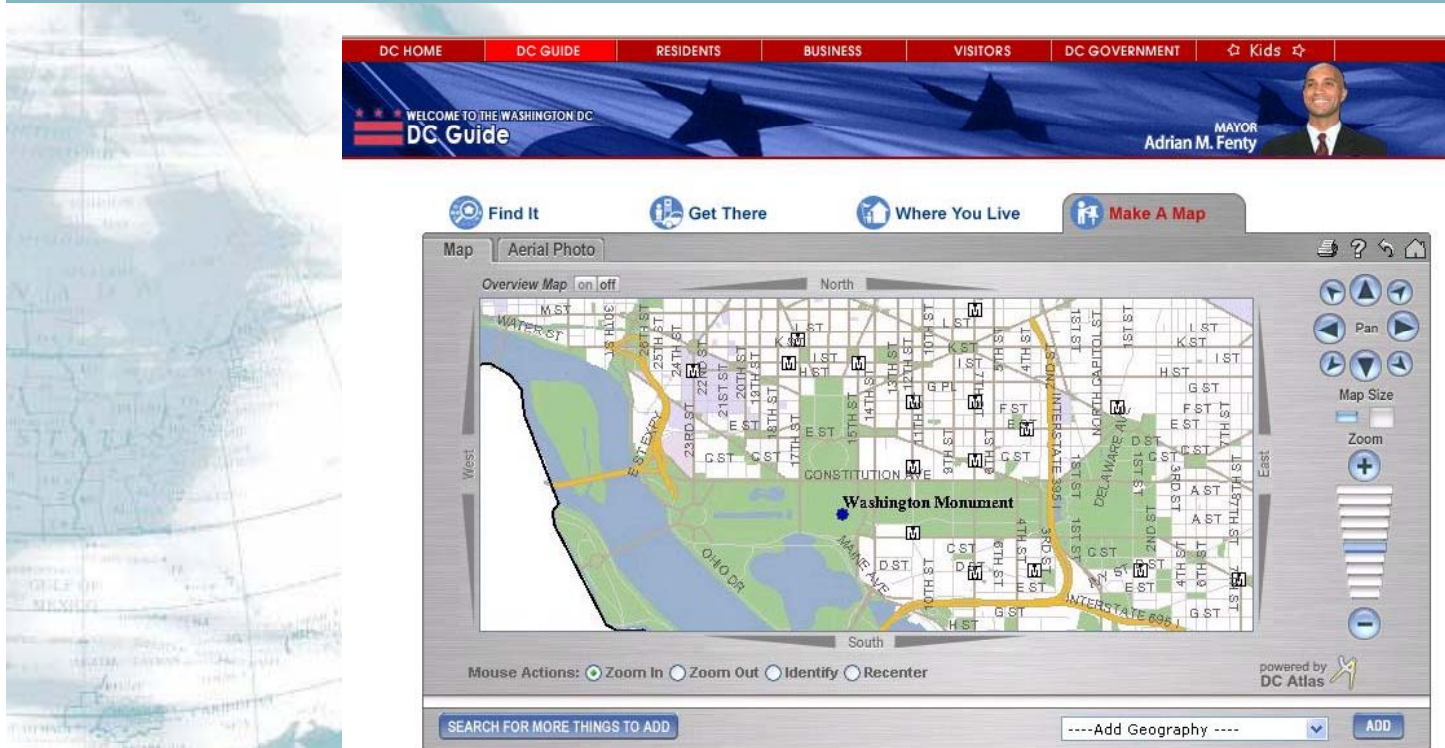
☐ Match if candidates tie

Output Fields

☒ X and Y coordinates ☒ Standardized address

☐ Reference data ID ☐ Percent along

DC GIS Strategic and Business Planning: **NEXT STEPS**



Presented to DC GIS Steering Committee
May 29, 2009



How we got here...



Strategic Planning Process: **Who has participated?**

- DC Agencies
- Independent DC Agencies
- Federal Agencies
- Academic Institutions
- Private Sector
- Nonprofits
- Others Groups
- Citizens



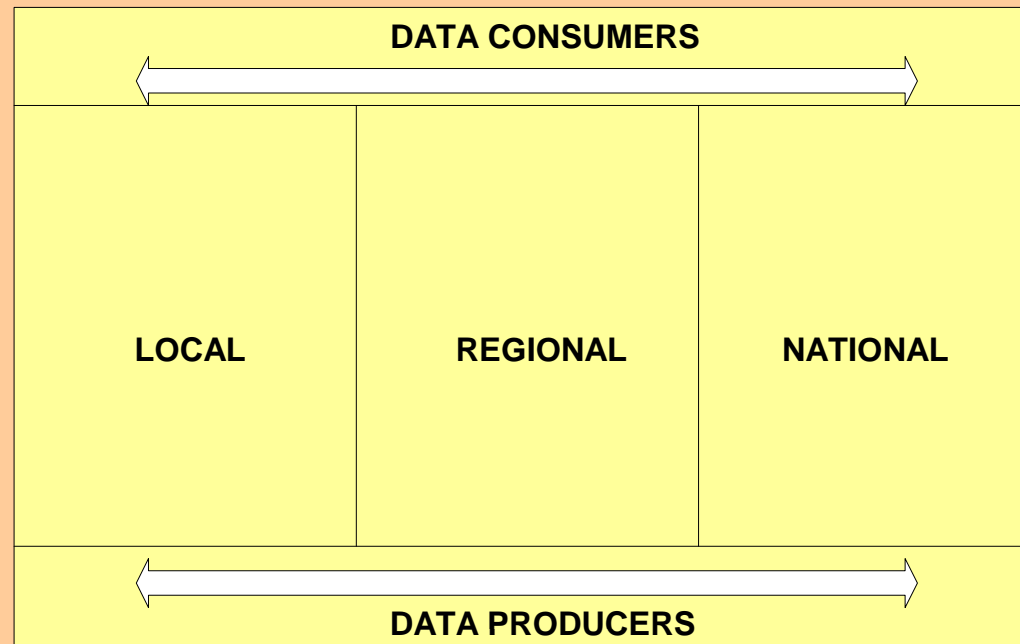
National Context: **Part of a Bigger Picture**

- National Spatial Data Infrastructure (NSDI)
- Federal Geographic Data Committee (FGDC) & National States Geographic Information Council (NSGIC) **“Fifty States Initiative”**
 - Cooperative Assistance Program (CAP) Grant Support
 - GIS Strategic Planning and Business Planning Guidance
 - Lessons Learned From Other CAP Grant Recipients
- National Geospatial Advisory Council (NGAC)



NSDI Goal: **Data Sharing**

National Spatial Data Infrastructure (NSDI)



Strategic Planning Process: **Overview**

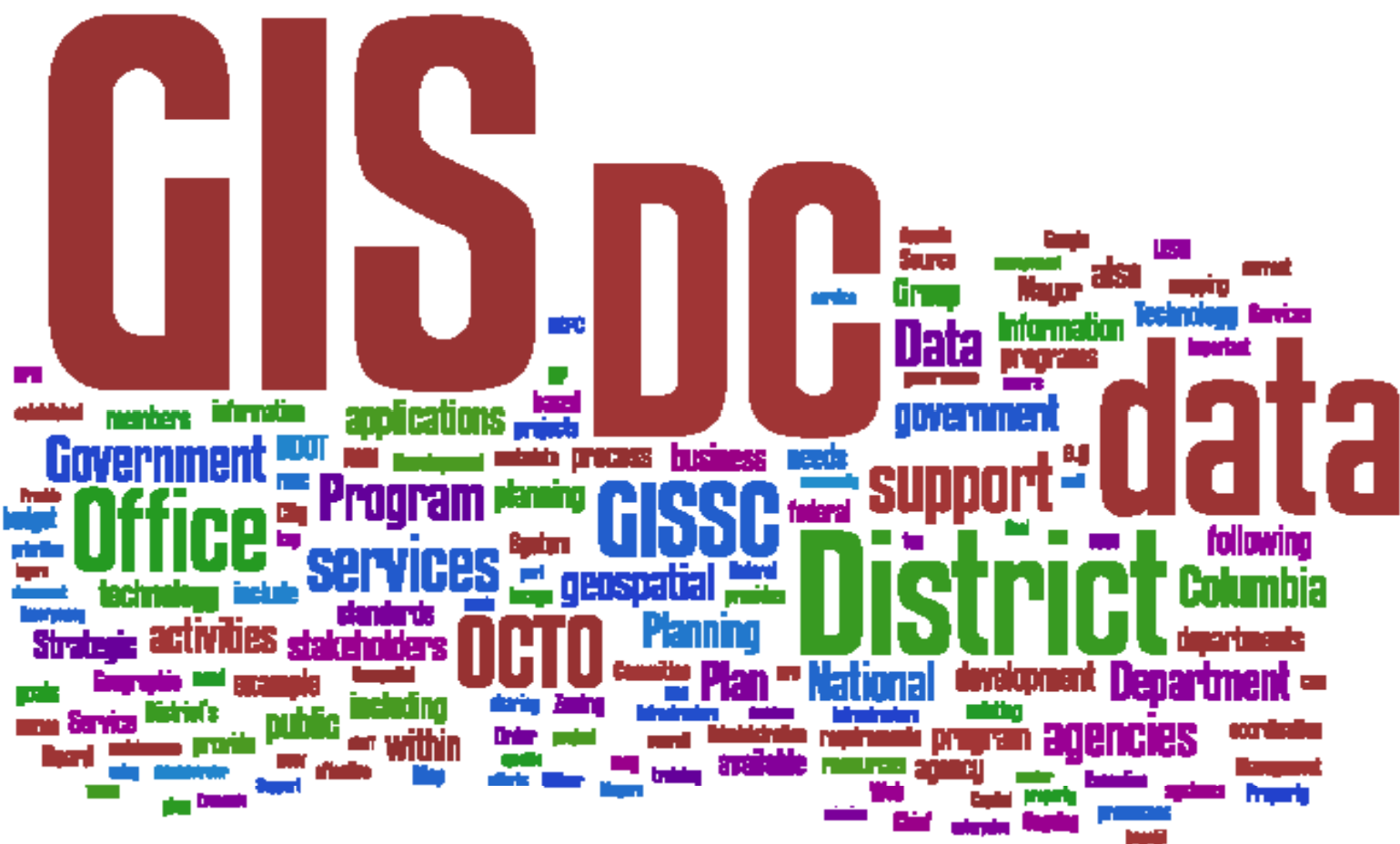
- ***Stakeholder workshops:*** December 2007 and March 2008 (over 40 people attended each one)
- ***GISSC meeting presentations and feedback:*** September 2007, June 2008, October 2008, and November 2008
- ***Strategic Plan Working Group (SPWG) sessions:*** January 2008 and June 2008
 - Barney Krucoff (OCTO)
 - Roger Barlow (USGS)
 - Charlie Richman (Office of Planning)
 - Dave Koehler (DPW)
 - Erik Johnson (FEMS)




Strategic Planning Process: **Overview (cont'd)**

- ***Departmental and stakeholder interviews, and teleconferences:*** January 208 – July 2008
- ***On-line survey questionnaire:*** Conducted in May 2008 (15 comprehensive responses to over 50 questions)
- ***Ad hoc meetings and telecommunications:*** Throughout the project performance period (September 2007 – July 2008)
- ***Document review and topical research (e.g. data profiling and analysis of the DC GIS Data Catalog):*** Throughout project (September 2007-July 2008)
- ***Iteration on draft documents*** -- first, second, and final drafts (with interim drafts on parts of the plan documents)





Strategic Planning Results: **Refined Mission Statement**



The Mission of DC Geographic Information System (DC GIS) is to **improve the quality and lower the cost of services provided by the DC Government**, through the District's collective investment and effective application of geospatial data and systems. Furthermore, DC GIS will reach beyond the DC Government by continuing to **make DC GIS data freely and publicly available to the fullest extent possible** in consideration of privacy and security.



Strategic Planning Results: **Goals**

The planning process resulted in six long-term (5- year) goals:

1. Ensure that state and local needs are met by focusing resources on geospatial data, systems, and program activities that are in alignment with District priorities
2. Develop and operate enterprise mapping data, geospatial applications, and Web services that enhance the utility, reduce the cost, and expand the interoperability of citywide and agency IT systems
3. Provide outstanding customer service and training that enable DC GIS users and stakeholders to leverage the full power of GIS technology
4. Sustain and improve GIS coordination and partnerships in the District of Columbia, the region, and the nation
5. Be innovative and adapt to the changing market for geospatial technology
6. Apply GIS in ways that increase revenue and reduce costs for the District



Important Accomplishments

- Consensus adoption of the DC GIS Strategic Plan by the GISSC, November 6, 2008
- Recommendation to expand the GISSC under Mayor's Order 2002-27, and other recommendations of the Strategic Plan, approved and made actionable by the City Administrator, Dan Tangherlini, on May 8, 2009,
- Going forward, the GISSC will:
 - Continue to be chaired by OCTO
 - Continue to include senior representatives of the original permanent members (Office of the Chief Technology Officer, District Department of Transportation, Office of Planning, and the Office of the City Administrator) **plus:**

See Table on Next Slide



Important Milestones (cont'd)

Table of GISSC Expanded Voting Membership*:

Department of Consumer and Regulatory Affairs	Office of Tax and Revenue
District Department of the Environment	Office of Unified Communications
Fire and Emergency Medical Services	Office of Zoning
Homeland Security and Emergency Management Agency	Water and Sewer Authority
Metropolitan Police Department	Department of Health
Office of Deputy Mayor for Planning and Econ. Development	Department of Public Works

* Plus USGS as a non-voting federal partner.



GISSC Actions from City Administrator

The expanded permanent members of the GISSC shall:

- Review and endorse the DC GIS Strategic Plan and Federated Data Model
- Develop **Bylaws** for the governance of GISSC, such as rules for establishing a quorum, conducting votes, and the formation of governance and subcommittees
- Produce and adopt an updated DC GIS **Business Plan** by September 30, 2009
- Schedule an official “GISSC Annual Budget Meeting” for September of each year, to review:
 - Past year’s spending
 - DC GIS Business Plan for spending in the coming year(s) with recommendations to the OCTO CTO and City Administrator
- Continue to hold meetings at least quarterly open to all agencies and the public



GISSC Actions: **DC GIS Business Plan**

- We got a head start in 2008 with DC GIS Staff
- Preliminary planning focused Data, Applications, and Services (i.e. Goals #2 and #3 from Strategic Plan)
 - Develop and operate enterprise mapping data, geospatial applications, and Web services that enhance the utility, reduce the cost, and expand the interoperability of citywide and agency IT systems
 - Provide outstanding customer service and training that enable DC GIS users and stakeholders to leverage the full power of GIS technology
- Participatory: Need a Business Plan Subcommittee!



GISSC Actions: **DC GIS Business Plan (cont'd)**

- Applying “Portfolio Management”
- Projects have different life-cycles and investment strategies:
 - Invest (build or enhance)
 - Maintain (provide basic support)
 - Sunset (migrate toward retirement)
 - Divest (shut-off spending and “kill it”)



GISSC Actions: **DC GIS Business Plan Next Steps**

- Form Business Plan Subcommittee (BPS)
- Share draft document with BPS
- Schedule teleconferences and/or web meetings with in next few weeks to get feedback and input (June-July iterations)
- Refine draft and derive presentation to make at next GISSC meeting in July
- Provide Final Draft Business Plan document for GISSC Budget Meeting in September
- Finalize Business Plan based on Budget Meeting



Four-Month Schedule

GISSC Action Items	June		July		August		September	
	1st Half	2nd Half	1st Half	2nd Half	1st Half	2nd Half	1st Half	2nd Half
Establish Business Plan Subcommittee (BPS)								
Establish Bylaws Subcommittee (BLS)								
Distribute preliminary draft of Business Plan to BPS								
Present revised draft of Business Plan to OCTO DC GIS								
Present revised draft of Business Plan to full GISSC								
BLS to meet and develop proposed Bylaws								
Present proposed Bylaws to OCTO DC GIS								
Present proposed Bylaws to full GISSC								
Finalize Business Plan based on GISSC feedback								
Present to OCTO DC GIS								
Finalize Bylaws based on GISSC feedback								
Present to OCTO DC GIS								
Annual Budget Meeting								
Vote on Bylaws								
Vote on Business Plan investment priorities								
Finalize Bylaws as needed								
Finalize Business Plan as needed								



GISSC Actions: **Bylaws**

- Form a “Bylaws Subcommittee” to (e.g.):
 - Establish protocols for conducting meetings
 - Determine when voting is needed
 - Determine voting rules
 - One agency one vote?
 - Simple majority wins?
 - Quorum for a vote to be valid?
 - Breaking deadlocks?
- Report back to the full GISSC in July (need to put in place by September to vote on Business Plan)

GISSC Actions: **Bylaws Subcommittee**

- Who should be on it?
 - Original members of GISSC?
 - Original members plus others?
 - What others?
- OR**
- One rep from each of the traditional “clusters?”
 - Human Services
 - Planning and Economic Development
 - Public Safety
 - Transportation and Operations
- Discussion...(and then, volunteers!)



Discussion



Thank you!



Rich Grady



rgrady@appgeo.com



DC Public Data Catalog

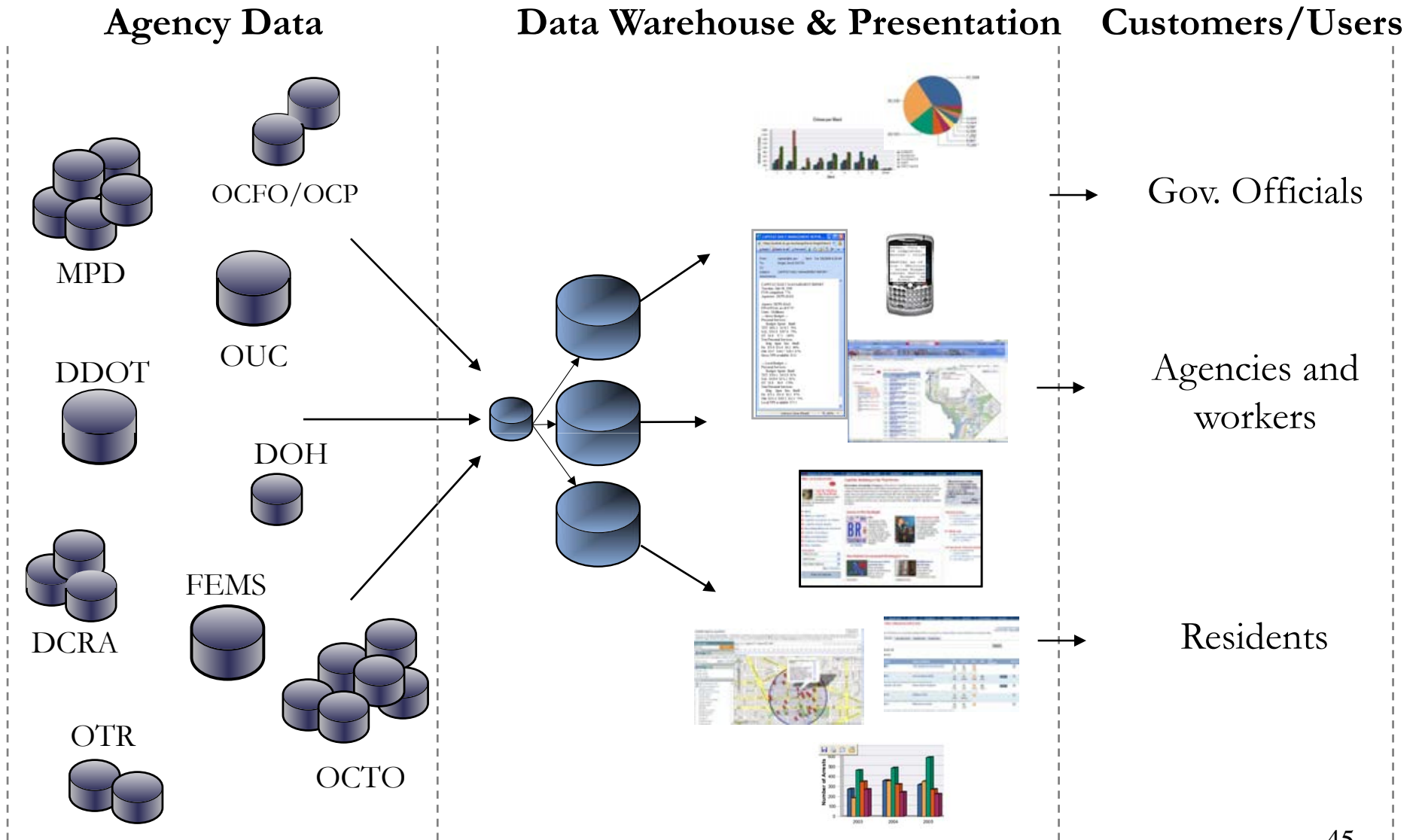
Providing Government Transparency and Accountability
By Publishing District Data



DC GIS Steering Committee Meeting

May 29, 2009

CityDW Overview



- Public Display of Over 270 Data Sets
- Search Capability of District Data and Agency Information
- One Click Access to Data on Google Maps
- Easy Data Downloads into Excel Spreadsheets
- Data Feeds that Provide Various Update Frequencies—
 - Some in Near Real Time
- Open Access to Data—No Registration Requirements

Data Catalog & Data Feeds



Data Catalog - Windows Internet Explorer

http://data.octo.dc.gov/

File Edit View Favorites Tools Help

Windows Live Live Search What's New Profile Mail Photos Calendar MSN Share Sign in

DC Intranet Start Page Data Catalog

District of Columbia MAYOR FENTY DC GUIDE RESIDENTS BUSINESS VISITORS GOVERNMENT FOR KIDS

Data Catalog

For years the District of Columbia has provided public access to city operational data through the Internet. Now the District provides citizens with the access to 275 datasets from multiple agencies, a catalyst ensuring agencies operate as more responsive, better performing organizations. Use the data catalog below to subscribe to a live data feed in Atom format and access data in XML, Text/CSV, KML or ESRI Shapefile formats. Please note that by accessing the data catalog and feeds, you agree to our [Terms of Use](#). Please read before accessing the data. All data visualizations on maps should be considered approximate. The visualizations provided by this application include only records that can be mapped. If you have any questions or comments about the DC Data Catalog, please contact us at citydw@dc.gov. Visit [DC FOIA page](#) for information on FOIA requests.

Live Data Feeds

- CJIS Juvenile Arrests and Charges
- Completed Construction Projects 2009
- Crime incidents (ASAP)
- Current Construction Projects
- Hansen Service Requests
- ITSA Awarded Engagements
- ITSA Current Open Requirements
- Public Space Permits
- Purchase Orders
- Registered Property
- Registered Vacant Property

See it on Google Maps

- Building Permits
- Completed Construction Projects 2007
- Completed Construction Projects 2008
- Completed Construction Projects 2009
- Crime incidents (ASAP)
- Current Construction Projects
- DCPS Computer Deployment
- Hansen Service Requests
- Housing Code Enforcement
- ITSA Awarded Engagements
- Public Space Permits

Custom Downloads

- Building Permits
- CJIS Juvenile Arrests and Charges
- Completed Construction Projects 2009
- Crime incidents (ASAP)
- Current Construction Projects
- Hansen Service Requests
- Public Space Permits
- Registered Property
- Registered Vacant Property

Popular Downloads

- CJIS Juvenile Arrests and Charges 2009
- CJIS Juvenile Arrests and Charges 2008
- Crime incidents (ASAP) 2009
- Crime incidents (ASAP) 2008
- Crime incidents (ASAP) 2007
- Crime incidents (ASAP) 2006
- Purchase Orders 2009
- Purchase Orders 2008
- Purchase Orders 2004-2007
- Public Space Permits 2008
- Public Space Permits 2004-2007
- ITSA Awarded Engagements
- Purchase Card Transactions (New)
- ITSA Current Open Requirements

Subscribe to Data Catalog News feed to get updates. For Developers, we provide the Data Catalog Description and Data Catalog Updates

For more information on government operations and performance monitoring visit the [CapStat website](#) or view [Summary Reports](#).

Text / CSV: Use this format for easy access to the data. Text/CSV files could be opened by most desktop spreadsheet applications (e.g. MS Excel).

Atom feed: Better suited for consumption by automated programs capable of handling Atom files. Allows subscription to data feed for continuous updates. [Learn more about Atom](#). We support GeoRSS extension which includes location as part of a feed.

XML: Better suited for consumption by automated programs capable of handling raw XML files.

ESRI: Used for consumption by ESRI-compatible mapping applications. Most datasets in ESRI format are updated on a monthly or quarterly basis as they are not "operational" in nature.

KML: Used to display geospatial data in Google Earth, Google Maps, and similar applications.

Navigation: OCTO HOME, About OCTO, How to Reach Us, Ask the CTO, FOIA Requests, News Room, Employment Opportunities, Site Map, Scorecard, SERVICES, CityDW, DC GIS, DC-NET, DC-WARN, UCC, INFORMATION, ASMP, HSMP, Policies, Guidelines, & Procedures, Program Management Standards, Spectrum Coalition for Public Safety, Web Standards and Style, ONLINE SERVICE REQUESTS

Users can download up-to-date data into a spreadsheet.

DC Data Catalog and Data Feeds

By accessing data catalog and feeds, you agree to our [Terms of Use](#). Please read before accessing the data.

Please note that data feeds contain the latest update from the source database (which might include records from several days ago and not today's date). Datasets marked 'daily' are published on weekdays with the latest information received from the source agency.

Learn about Data Formats
[Back to Data Catalog Main](#)

All Formats **Live Data Feeds** Tabular Data Spatial Data

Category: All

Source	Metadata
DCRA	Building Permits
MPD	CJIS Juvenile Arrests and Charges
DDOT	Completed Construction Projects 2003
DDOT	Completed Construction Projects 2004
DDOT	Completed Construction Projects 2005
DDOT	Completed Construction Projects 2006
DDOT	Completed Construction Projects 2007
DDOT	Completed Construction Projects 2008
MPD	Crime Incidents (ASAP)
DDOT	Current Construction Projects
Citywide Call Center	Hansen Service Requests

dcra_building_permits_current_csv (Read-Only) - Microsoft Excel

DCRAINTERNALNUMBER	ISSUE_DATE	PERMIT_ISSUE_DATE	PERMIT_TYPE	PERMIT_STATUS	PERMIT_CATEGORY	APPLICANT_FULL_NAME	ADDRESS	DESC_OF_WORK	ZONING	PERMIT_FEE	PAID_FEE
1192236	8/22/2016	8/22/2016	CONSTRUI ALTERATIK NA	NA	PERMIT IS 1507 BENI REPLACE OF : INTERIOR DOORS	NICK JURK	158.82 (HI)			3254 PI	
11105414	8/10/2016	8/10/2016	CONSTRUI ADDITION NA	NA	PERMIT IS 1720 D ST INTERIOR RESTORATION OF EXI KERBY PAI	100.00 (HI)				1521 M	
11105662	8/10/2016	8/10/2016	CONSTRUI ALTERATIK NA	NA	PERMIT IS 623 S ST N INTERIOR WORK. INSTALL NEW NICK BOU	1816.00 (A)				1910 14	
11107574	8/10/2016	8/10/2016	CONSTRUI ALTERATIK NA	NA	PERMIT IS 804 RHOD ALTERATIK 3846 0085	RONALD A 400.00 (HI)				13272 G	
11109182	8/10/2016	8/10/2016	CONSTRUI NEW BUIL NA	NA	PERMIT IS 1647 A 111 NEW CON 4054 0093 R-4	MOHAMM 100.00 (HI)				987 JC	
11112177	8/11/2016	8/11/2016	CONSTRUI ALTERATIK NA	NA	PERMIT IS 1600 NEW RENOVAT	134				ERIC MOR 49030.00 (51695 RE
11112188	8/11/2016	8/11/2016	CONSTRUI ALTERATIK NA	NA	PERMIT IS 837 FLORII RENOVAT	908				ALPHONS 50.00 (HIS)	1045 LA
11113002	8/11/2016	8/11/2016	CONSTRUI ALTERATIK NA	NA	PERMIT IS 2208 HALL GARAGE IN REAR OF PROPERTY TIM ROBIN	150.00 (HI)				3225 TI	
11114275	8/11/2016	8/11/2016	CONSTRUI NEW BUIL NA	NA	PERMIT IS 5371 HAYE NEW SING 5209 0030	MURIEL FF 125.00 (HI)				909 CH	
11114420	8/11/2016	8/11/2016	CONSTRUI ALTERATIK NA	NA	PERMIT IS 4412 KAN: NEW 24' X 19'-9 REAR ADDITION MOHAME	712.64 (AC)				741 PA	
11114630	8/11/2016	8/11/2016	CONSTRUI ADDITION NA	NA	PERMIT IS 4238 40TH 2 STORY ADDITION WITH BASEN THUY LE	36.50 (HIS)				1555 AI	
11115436	8/11/2016	8/11/2016	CONSTRUI NEW BUIL NA	NA	PERMIT IS 2239 RIDG NEW CONSTRUCTION - SINGLE	TAHER KH 15.00 (GRE)				927 DI	
11115760	8/11/2016	8/11/2016	CONSTRUI ALTERATIK NA	NA	PERMIT IS 909 NEW J TO CONSTRUCT A 455 SQ FT CO OLYPIA PC	636.20 (RE)				669 JP	
11115961	8/11/2016	8/11/2016	CONSTRUI ADDITION NA	NA	PERMIT IS 5521 POTC NEW TWC 1449 0831	JESSICA BI 705.00 (HI)				15047 JA	
11116102	8/11/2016	8/11/2016	CONSTRUI NEW BUIL NA	NA	PERMIT IS 1841 0TH S NEW WOC 0475 0030	SAMI ZO 18.48 (NE)				2790 LV	
11116995	8/11/2016	8/11/2016	CONSTRUI NEW BUIL NA	NA	PERMIT IS 950 22ND FOUNDAT 0054 0839	CARLOS RI 170535.13				171685 BC	
11117023	8/11/2016	8/11/2016	CONSTRUI NEW BUIL NA	NA	PERMIT IS 4800 SHER SFD - FOUNDATION ONLY	EARL JENK 40.00 (HIS)				210 CA	
11117710	8/11/2016	8/11/2016	CONSTRUI ADDITION NA	NA	PERMIT IS 4830 TILD NEW 3 STORY NO BASEMENT A	MICHAEL / 1239.58 (A)				1390 M	
11117752	8/11/2016	8/11/2016	CONSTRUI ALTERATIK NA	NA	PERMIT IS 1201 16TH ALTERATION AND ADDITION TC ANDREW	1680.59 (GF)				21181 NI	
11118705	8/11/2016	8/11/2016	CONSTRUI ALTERATIK NA	NA	PERMIT IS 3703 14TH NEW TEN/ 2826 0011 C-2-A	JESSICA LI 1550.00 (A)				1654 37	
11118886	8/11/2016	8/11/2016	CONSTRUI ALTERATIK NA	NA	PERMIT IS 1835 3RD S INTERIOR	3567 0813				JESSICA BI 620.00 (HI)	13236 DV
11118888	8/11/2016	8/11/2016	CONSTRUI NEW BUIL NA	NA	PERMIT IS 1757 W ST CONSTRUI 5755 0042 R5A	TANYA HII 270.00 (FI)				1260 AI	
11118890	8/11/2016	8/11/2016	CONSTRUI NEW BUIL NA	NA	PERMIT IS 1751 W ST CONSTRUI 5755 0039 R-5-A	TANYA HII 36.60 (NE)				76560 AI	
11118896	8/11/2016	8/11/2016	CONSTRUI NEW BUIL NA	NA	PERMIT IS 1759 W ST CONSTRUI 5755 0043 R5A	TANYA HII 723.60 (AL)				1530 AT	
11119180	8/11/2016	8/11/2016	CONSTRUI NEW BUIL NA	NA	PERMIT IS 5110 QUEE NEW CONSTRUCTION SINGLE F	TAHER KH 97.50 (GRE)				1232 DI	
11119426	8/11/2016	8/11/2016	CONSTRUI ALTERATIK NA	NA	PERMIT IS 314 13TH S INTERIOR RENOVATION FROM	GUSTAVO 68.00 (HIS)				1489 G	

Available from the DC Data Catalog and Data Feeds <http://data.octo.dc.gov/>

Users can map your data with a single click.

DC Data Catalog and Data Feeds

By accessing data catalog and feeds, you agree to our [Terms of Use](#). Please read before accessing the data.

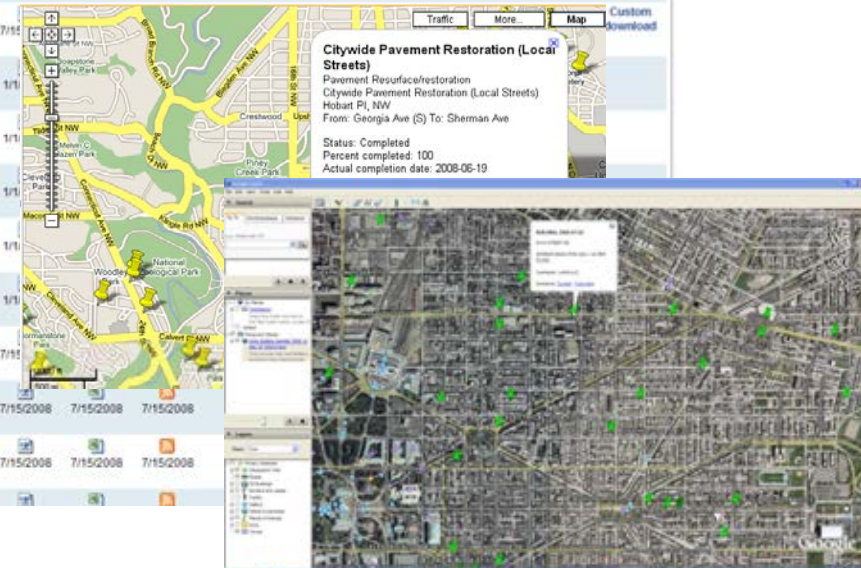
Please note that data feeds contain the latest update from the source database (which might include records from several days ago and not today's date). Datasets marked "daily" are published on weekdays with the latest information received from the source agency.

[All Formats](#) [Live Data Feeds](#) [Tabular Data](#) [Spatial Data](#)

[Learn about Data Formats](#)
[<< Back to Data Catalog Main](#)

Category: All

Source	Metadata	XML	Text/CSV	Atom	KML/ESRI Shapefile	Maps	Download
DCRA	Building Permits	7/14/2008	7/14/2008	7/14/2008	7/14/2008	See it on Google Maps	Custom download
Provides information on building permits granted by the Department of Consumer and Regulatory Affairs (DCRA).							
MPD	CJIS Juvenile Arrests and Charges						Custom download
Provides juvenile arrests and charges reported by the Metropolitan Police Department (MPD), aggregated to block level.							
DOOT	Completed Construction Projects 2003						
Provides information on completed construction projects reported by DOOT in 2003.							
DOOT	Completed Construction Projects 2004						
Provides information on completed construction projects reported by DOOT in 2004.							
DOOT	Completed Construction Projects 2005						
Provides information on completed construction projects reported by DOOT in 2005.							
DOOT	Completed Construction Projects 2006						
Provides information on completed construction projects reported by DOOT in 2006.							
DOOT	Completed Construction Projects 2007						
Provides information on completed construction projects reported by DOOT in 2007.							
DOOT	Completed Construction Projects 2008						
Provides information on completed construction projects reported by DOOT in 2008.							
MPD	Crime Incidents (ASAP)						
Provides property and violent crime incidents reported by MPD.							
DOOT	Current Construction Projects						
Provides information on current construction projects reported by DOOT.							
Citywide Call Center	Hansen Service Requests						



Available from the DC Data Catalog and Data Feeds <http://data.octo.dc.gov/>

Data Catalog - Windows Internet Explorer

http://data.octo.dc.gov/NewCalendar.aspx?datasetid=2

File Edit View Favorites Tools Help

Windows Live Live Search What's New Profile Mail Photos Calendar MSN Share Sign in

DC Intranet Start Page FOIA Facts: DOJ AG Issues ... Data Catalog

District of Columbia MAYOR FENTY DC GUIDE RESIDENTS BUSINESS VISITORS GOVERNMENT FOR KIDS

OCTO HOME
About OCTO
How to Reach Us
Ask the CTO
FOIA Requests
News Room
Employment
Opportunities
Site Map
Scorecard

SERVICES
CityDW
DC GIS
DC-NET
DC-WARN
UCC





INFORMATION
ASMP
HSMP
Policies, Guidelines, & Procedures
Program Management
Standards
Spectrum Coalition for Public Safety
Web Standards and Style

ONLINE SERVICE REQUESTS

<< Back to Data Catalog Main

CJIS Juvenile Arrests and Charges

Popular Downloads

Date Range	XML	Text/CSV	KML
From 01/01/2008 to 01/01/2009			
From 01/01/2009 to 05/11/2009			

Download Data

Customize your data downloads below by selecting a location, time range and format. Data is available in XML, Text/CSV, KML or ESRI Shapefile formats. If you are unfamiliar with these data formats, please read the [descriptions](#) below. In most cases, you will be asked to select which date field the report should be filtered by (ie. Completion Date, Modified Date, etc). Once your selections are made, click "Get Data." If data does not appear, you may need to turn off pop-up blockers. Or, the requested data may be too large, if this is the case, you will receive an error message & be asked to either split the data or provide your email address so we can process your request and email the results.

Learn [more](#) about data.

Select a location

☐ Citywide

☒ Ward

☐ ANC

☐ Police District

☐ PSA

☐ Neighbourhood Cluster

☐ BID

Ward 1

Ward 2

Ward 3

Ward 4

Ward 5

Ward 6

Ward 7

Ward 8

Select a time range

☒ Last 30 days

☐ Last 60 days

☐ One year

☐ Year to date

☐ Other

Based on Date of arrest

Select a preferable format of results

☒ CSV

☐ XML

Get Data

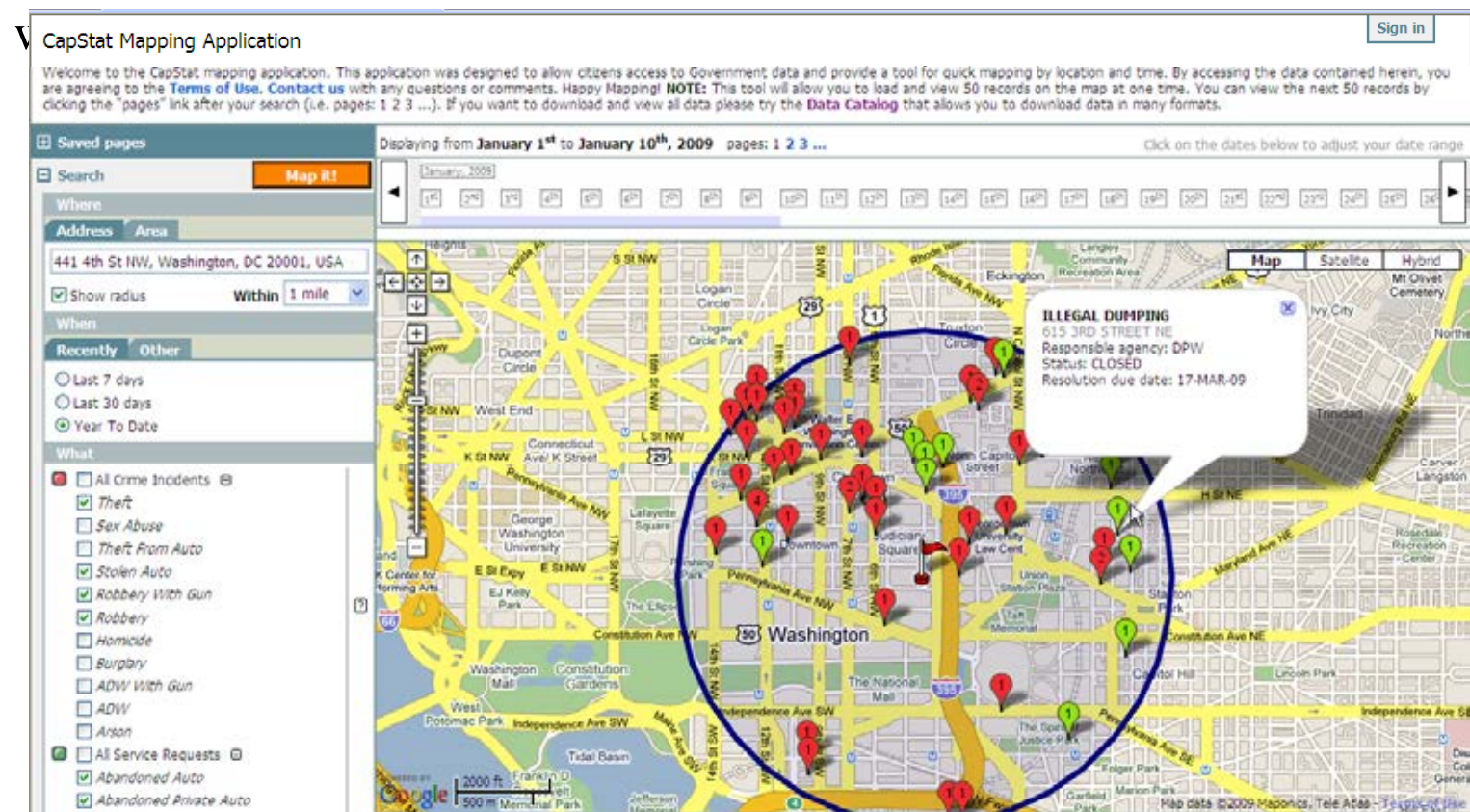
Data Catalog Custom Downloads

CJIS_from04_11_2009_to05_11_2009[1].csv - Microsoft Excel

	A	B	C	D	E	F	G	H	I	J	K	L	M	N	O	P	Q
	CHARGEID	DATEOFBIRTH	ARRESTDATETIME	RACE	GENDER	WEAPON	WEAPON	DRUGCOD	DRUGDES	YEARSOF	MARITALS	EMPLOYM	ETHNICITY	BOOKINGDATETIME	TACTICCO	TACTICDE	PREM
1																	
2	1929955	19970105	4/12/2009 21:10	B	F	-1	NO VALUE	-1	NO VALUE ASSIGNED.			Y	A	4/12/2009 23:06	-1	NO VALUE	
3	1930249	19930106	4/14/2009 18:55	B	F	-1	NO VALUE	-1	NO VALUE ASSIGNED.			Y	A	4/14/2009 22:06	-1	NO VALUE	
4	1930250	19930107	4/14/2009 19:59	B	M	-1	NO VALUE	-1	NO VALUE ASSIGNED.			Y	A	4/14/2009 22:47	-1	NO VALUE	
5	1930537	19910604	4/16/2009 0:50	B	M	-1	NO VALUE	-1	NO VALUE ASSIGNED.			N	U	4/16/2009 6:31	2	RADIO RU	
6	1933281	19941003	4/18/2009 21:00	B	M	-1	NO VALUE	-1	NO VALUE ASSIGNED.			Y	A	4/18/2009 23:19	-1	NO VALUE	
7	1931256	19920802	4/20/2009 17:45	W	M	-1	NO VALUE	-1	NO VALUE ASSIGNED.			Y	U	4/20/2009 19:48	-1	NO VALUE	
8	1931478	19920805	4/21/2009 17:50	B	M	-1	NO VALUE	-1	NO VALUE ASSIGNED.			Y	A	4/21/2009 21:44	-1	NO VALUE	
9	1931846	19920413	4/23/2009 18:45	B	M	-1	NO VALUE	-1	NO VALUE ASSIGNED.			N	A	4/23/2009 20:37	-1	NO VALUE	
10	1932234	19910901	4/24/2009 23:15	B	M	ON	UNKNOWN	-1	NO VALUE ASSIGNED.			Y	U	4/25/2009 0:38	1	OFFICER V	
11	1932235	19911015	4/25/2009 0:01	B	F	ON	UNKNOWN	-1	NO VALUE ASSIGNED.			N	U	4/25/2009 4:13	1	OFFICER V	
12	1932680	19930620	4/27/2009 9:00	B	M	-1	NO VALUE	-1	NO VALUE ASSIGNED.			N	A	4/27/2009 13:22	-1	NO VALUE	
13	1932681	19930620	4/27/2009 9:00	B	M	-1	NO VALUE	-1	NO VALUE ASSIGNED.			N	A	4/27/2009 13:22	-1	NO VALUE	
14	1932973	19910614	4/28/2009 16:25	B	M	-1	NO VALUE	-1	NO VALUE ASSIGNED.			Y	A	4/28/2009 19:01	1	OFFICER V	
15	1932972	19920104	4/28/2009 16:25	B	M	-1	NO VALUE	-1	NO VALUE ASSIGNED.			Y	A	4/28/2009 19:00	1	OFFICER V	
16	1933096	19970412	4/29/2009 14:15	B	M	8	OTHER	-1	NO VALUE ASSIGNED.			Y	A	4/29/2009 17:05	1	OFFICER V	
17	1934090	19930412	5/4/2009 15:25	B	M	-1	NO VALUE	-1	NO VALUE ASSIGNED.			Y	A	5/4/2009 20:13	1	OFFICER V	
18	1934723	19940328	5/7/2009 10:10	B	M	-1	NO VALUE	-1	NO VALUE ASSIGNED.			N	A	5/7/2009 12:28	-1	NO VALUE	
19	1934813	19940111	5/7/2009 19:53	B	M	ON	UNKNOWN	-1	NO VALUE ASSIGNED.			N	A	5/7/2009 21:19	2	RADIO RU	
20	1935045	19940908	5/8/2009 15:40	B	M	-1	NO VALUE	-1	NO VALUE ASSIGNED.			Y	A	5/8/2009 19:22	-1	NO VALUE	
21	1935046	19940901	5/8/2009 15:40	B	M	-1	NO VALUE	-1	NO VALUE ASSIGNED.			Y	A	5/8/2009 19:23	-1	NO VALUE	
22	1935387	19920515	5/10/2009 2:51	B	M	-1	NO VALUE	-1	NO VALUE ASSIGNED.			N	A	5/10/2009 6:24	1	OFFICER V	
23	1935386	19920515	5/10/2009 2:51	B	M	-1	NO VALUE	-1	NO VALUE ASSIGNED.			N	A	5/10/2009 6:24	1	OFFICER V	
24	1935388	19920515	5/10/2009 2:51	B	M	-1	NO VALUE	-1	NO VALUE ASSIGNED.			N	A	5/10/2009 6:24	1	OFFICER V	
25																	

The CapStat Mapping Application

- Search by location/address, person
- Point mapping, Google Map based
- Research an area: **crimes, service requests or inspections...**, when and



Data Catalog via DC GIS

Ambulatory surgical centers as defined by DOH.

OTR via DC GIS	Appropriations	05/07/2009	05/07/2009
----------------	----------------	------------	------------

U.S Appropriations are lands set aside at the time of the original founding and platting of the city for use by the U.S. Federal Government.

AOC via DC GIS	Architect of the Capitol Areas		
----------------	--------------------------------	--	--

Architect of the Capitol (AOC) areas

OTR via DC GIS	Assessment Neighborhoods		
----------------	--------------------------	--	--

Assessment Neighborhoods

OTR via DC GIS	Assessment Subneighborhoods		
----------------	-----------------------------	--	--

Assessment subneighborhoods

OCTO via DC GIS	Baker Plan		
-----------------	------------	--	--

Plan of the city of Washington : now building for the metropolis of America, and established as the permanent residence

DCISB via DC GIS	Bank Locations	04/18/2009	
------------------	----------------	------------	--

Banks in DC

DDOT via DC GIS	Bicycle Lane		
-----------------	--------------	--	--

Bicycle lanes in dc

DC GIS	Bike Routes - Signed		
--------	----------------------	--	--

Bike routes with signs in DC.

DDOT via DC GIS	Bridges and Tunnels		
-----------------	---------------------	--	--

Bridges and Tunnels

DC GIS	Bridges with Attributes - point		
--------	---------------------------------	--	--

DC GIS	Bridges with Attributes - polygon		
--------	-----------------------------------	--	--

DCRA via DC GIS

	Building Restrictions		
--	-----------------------	--	--

Building restriction lines.

OCTO via DC GIS	Building spot elevations		
-----------------	--------------------------	--	--

Rooftop Spot Elevations

OCTO via DC GIS	Buildings		
-----------------	-----------	--	--

Building footprints with firewalls.

OCTO via DC GIS	Buildings - 3D (ESRI Format ONLY)		
-----------------	-----------------------------------	--	--

ARLAND D WILLIAMS (14TH ST) MEMORIAL BRIDGE

GIS_ID=170140
 DESCRIPTION=Bridge
 CAPTUREYEAR=3/21/1999
 NAME=ARLAND D WILLIAMS (14TH ST) MEMORIAL BRIDGE
 SHAPE AREA=15306.84718
 SHAPE LEN=1623.83469877031

[Google Search](#)
[Google Maps](#)

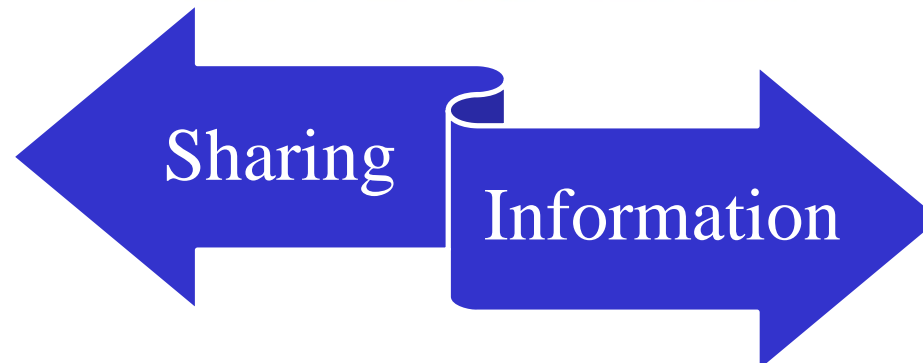
Directions: [To here](#) - [from here](#)

A Shared Commitment to Government Transparency

CityDW and DC GIS:

- Share the common goal of providing District data to promote open government and provide information to residents, businesses, and visitors to the District of Columbia.
- Both work to provide centralized repositories for District data.
- Share data.

The Need for More Data



How You Can Help

- ✓ Provide Awareness
- ✓ Provide Data

CityDW@dc.gov

<http://citydw.octo.dc.gov/>

<http://data.octo.dc.gov/>

<http://reports.citydw.octo.dc.gov/>

<http://capstat.octa.dc.gov/mapping/>

David Strigel

Program Manager – Citywide Data Warehouse

David.Strigel@DC.gov

Julia Bezgacheva

Data Team Lead – Citywide Data Warehouse

Julia.Bezgacheva@DC.gov

Christopher Marshall

Program Analyst – Citywide Data Warehouse

Christopher.Marshall@DC.gov



Data Report

Mario Field, Dr. Data



Data Updates



- **ABRA Liquor License**
- **Business Point (INFO USA)**
- **Capital Project 2010**
- **DC Connector Bus**
- **Embassy**
- **Land Cover 2006**
- **Main Street**
- **Retail Site (WDCEP)**
- **Sex Offender**
- **Snow Emergency Route**
- **Street Tree**
- **Traffic Volume (2006 and 2007)**



Final Planimetric Data Delivered



- **Building**
 - **Bridge and Tunnel**
 - **Geodetic Control Point**
 - **Obscured Area**
 - **Railroad**
 - **Road**
 - **Sidewalk**
 - **Street Centerline**
 - **Wooded Area**
-
- **Tentative load date: June 12, 2009**



Use Constraint Clarification



- Acknowledgment of the DC Geographic Information Systems Program (DC GIS). The District of Columbia Government makes no claims as to the completeness, accuracy or content of any data contained hereon, and makes no representation of any kind, including, but not limited to, the warranty of the accuracy or fitness for a particular use, nor are any such warranties to be implied or inferred with respect to the information or data furnished herein.



VPM – Public Lands Update

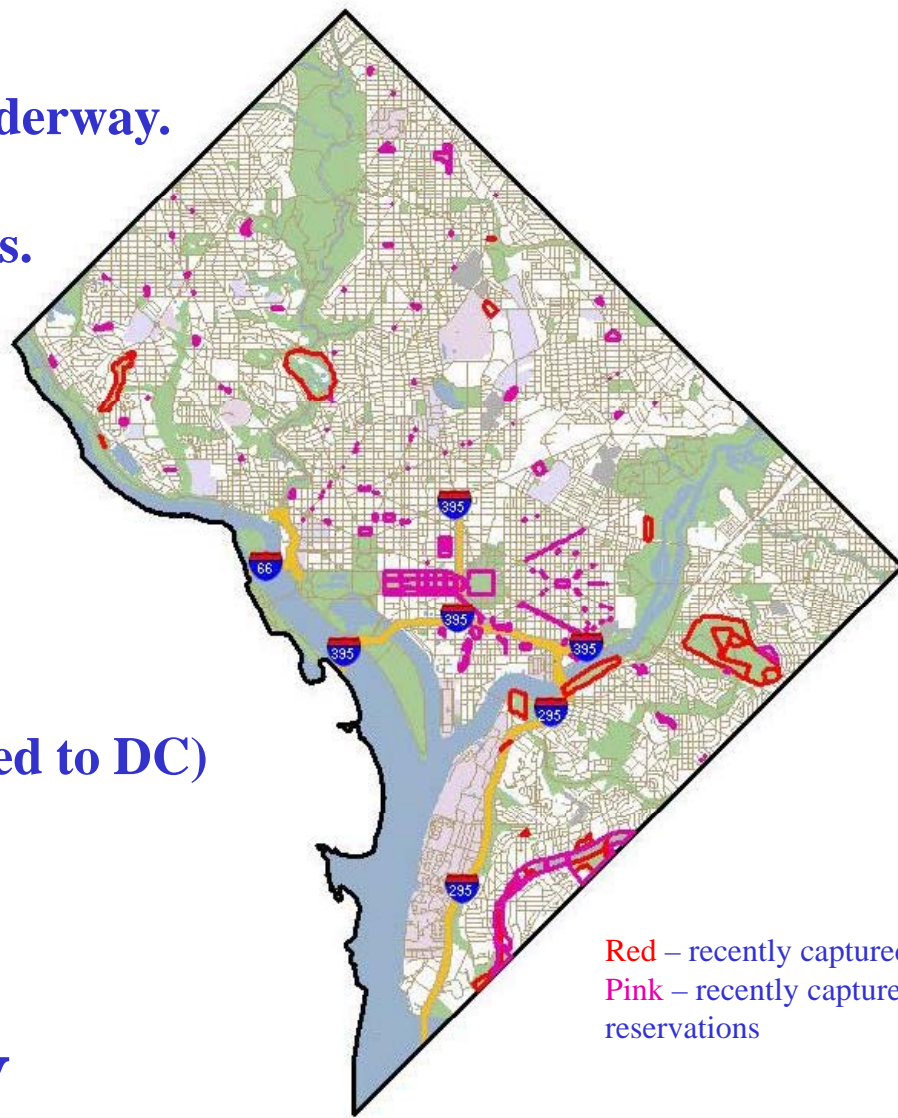
Project to map public lands is underway.

Mapped 20% ~ 1150 Reservations.

Mapped 85% ~ 1300 parcels

Recent Public Lands include:

- National Zoo
- Fort Dupont Park
- Triangle Park (many transferred to DC)
- Battery Kemble Park
- Oxon Run Parkway



Red – recently captured parcels
Pink – recently captured reservations

vpm.dc.gov



Upcoming Data



- **Contours**
- **DTM**
- **Federal Location**
- **Hotel**
- **Gas Station**
- **Green Roof**
- **HIV Clinic**
- **Rehabs**
- **School Attendance Boundary**

Assessing Urban Tree Canopy in the Nation's Capital

Jarlath O'Neil-Dunne

University of Vermont

Spatial Analysis Laboratory

802.656.3323

joneildu@uvm.edu



Funding for this study was provided by the U.S. Forest Service

UTC Assessment

Questions

How much tree canopy do we have?

How much tree canopy could we have?

Who “owns” the tree canopy?

How is the tree canopy distributed?

Answers

UTC Metrics

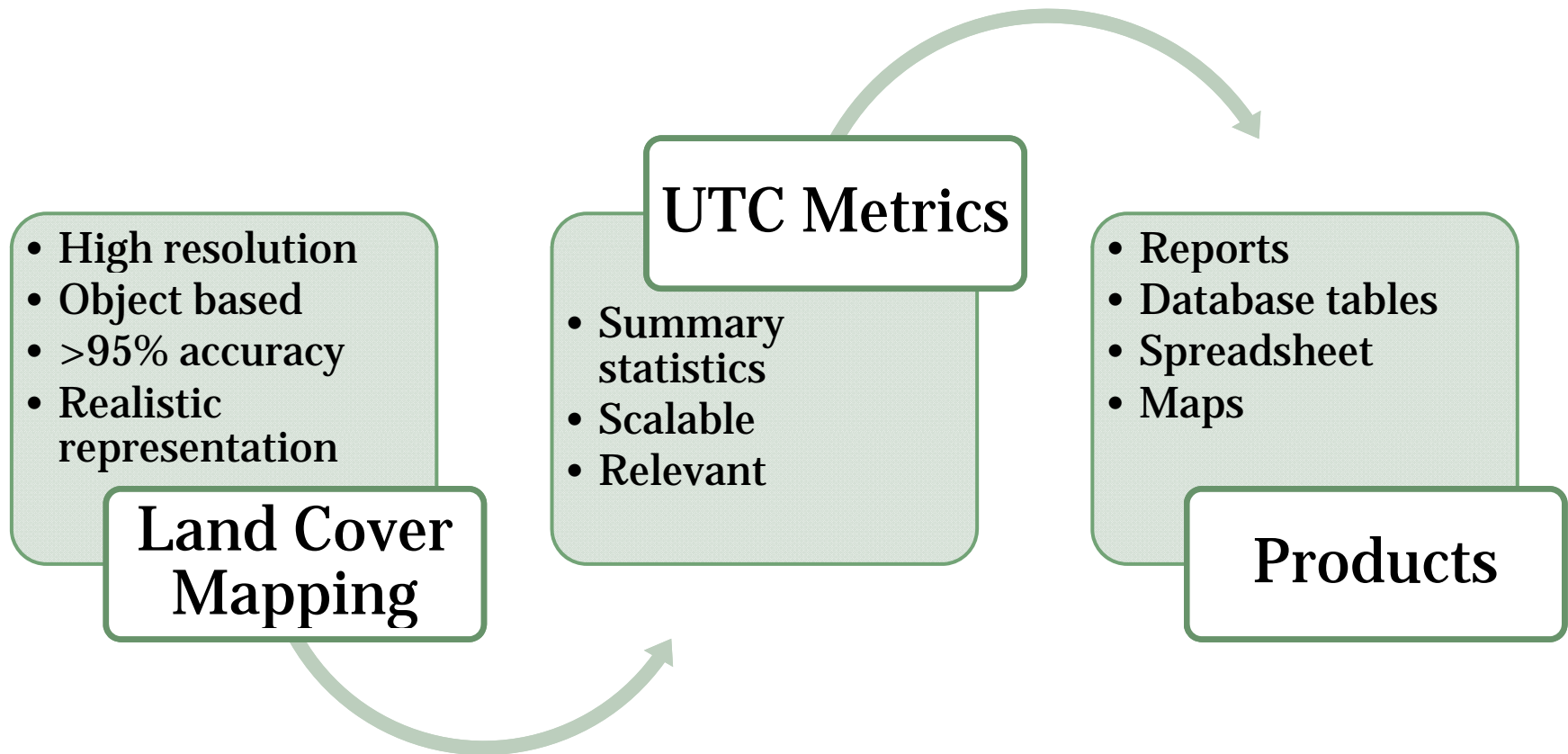
Possible UTC

Existing UTC

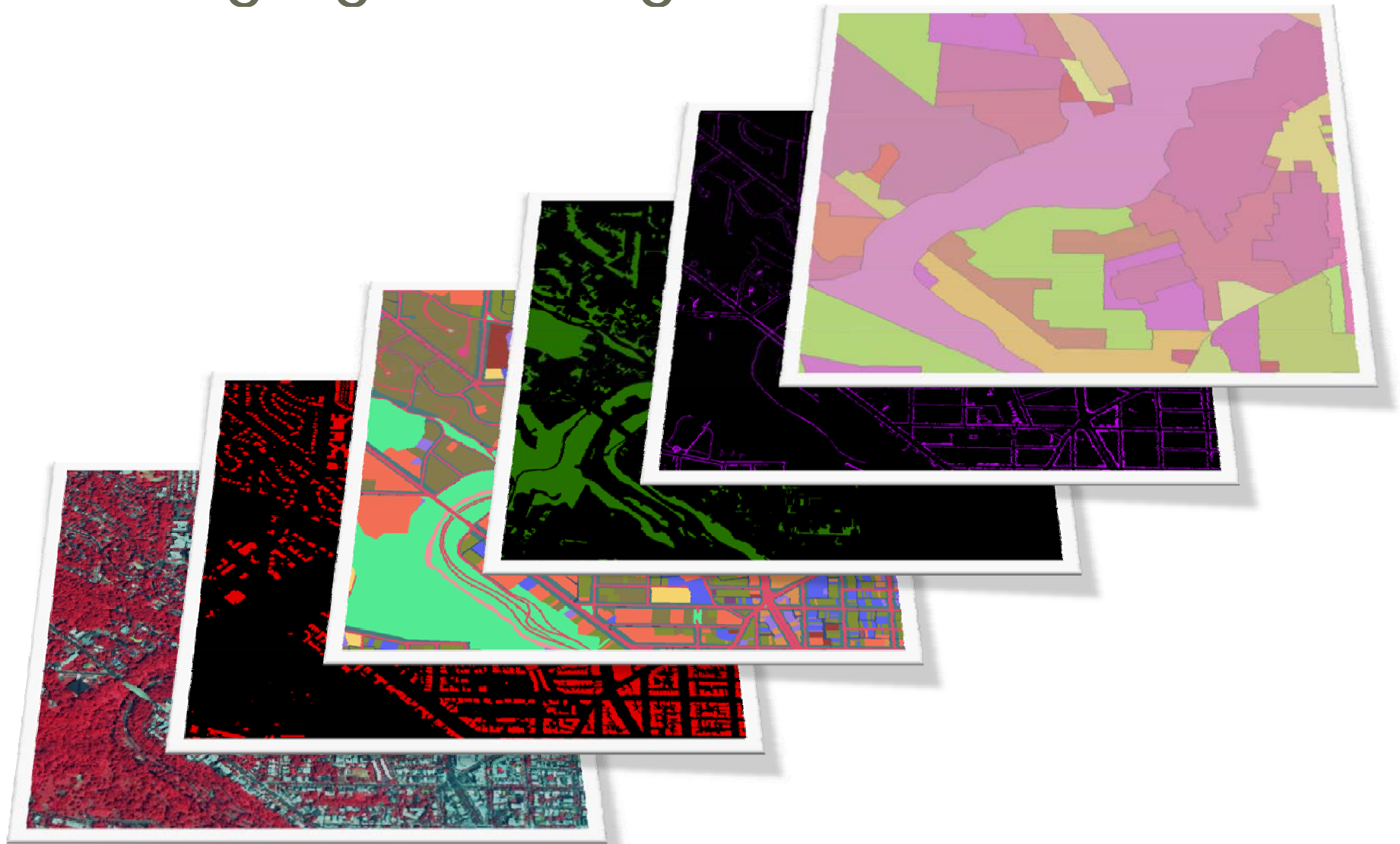
Vegetation

Impervious

Approach



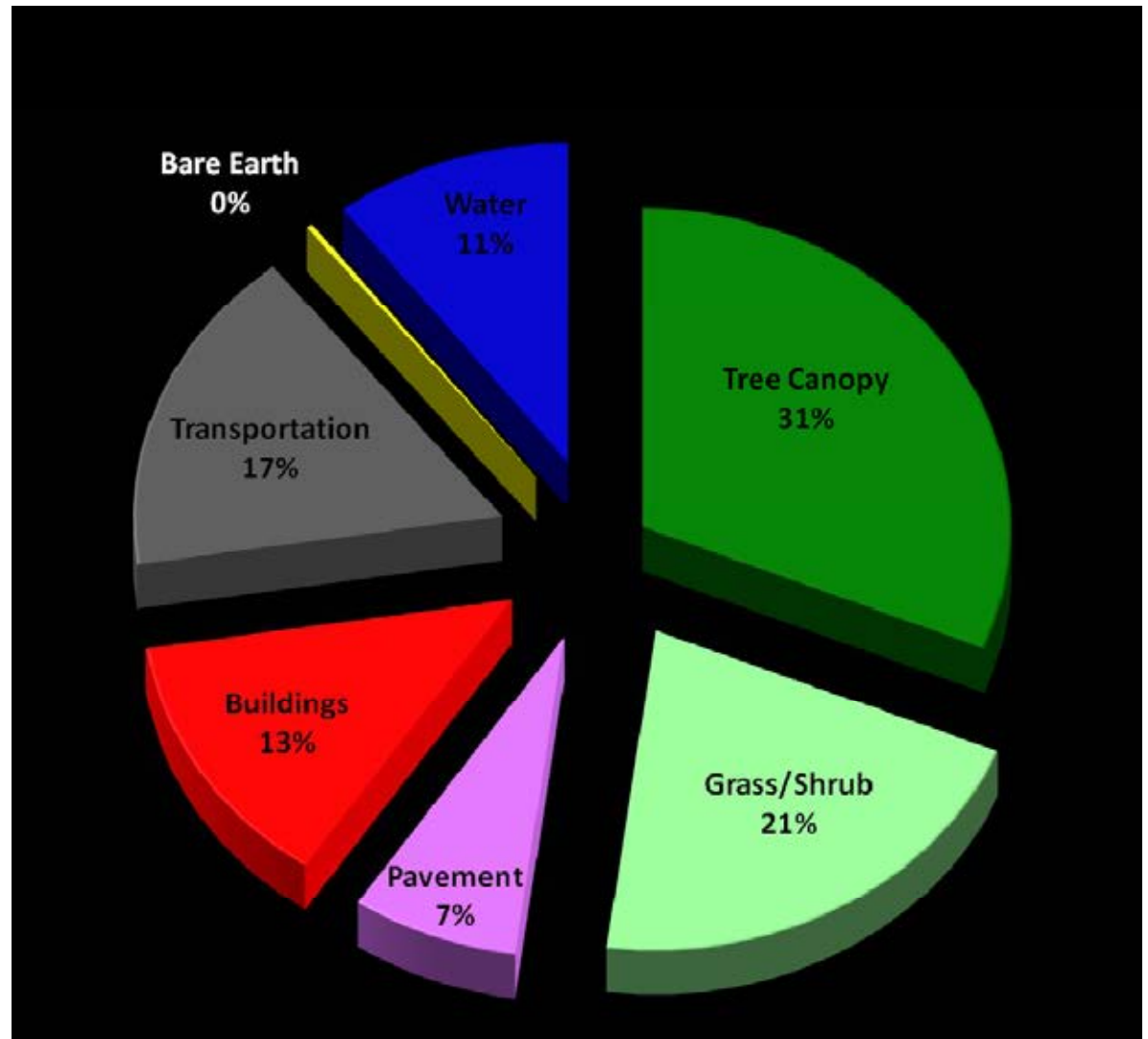
Leveraging Existing Investments



Land Cover Mapping



Land Cover Metrics

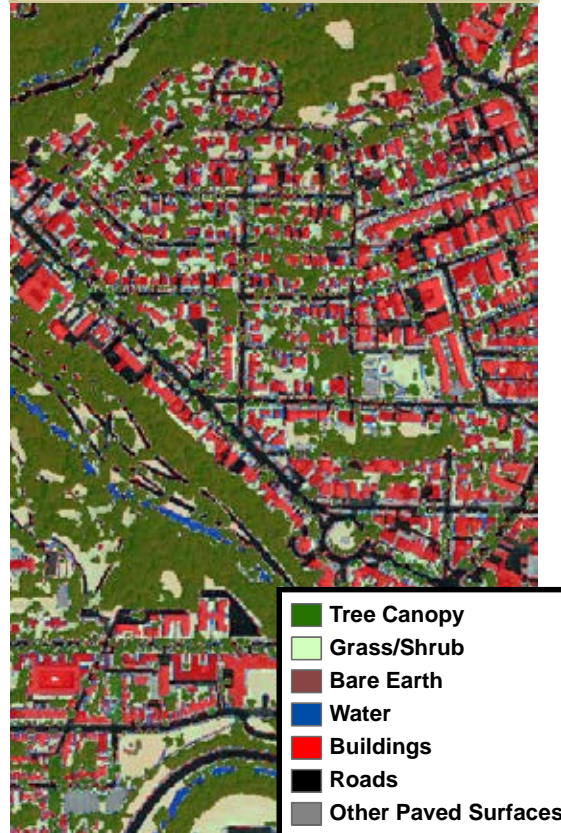


Comparison to National Datasets

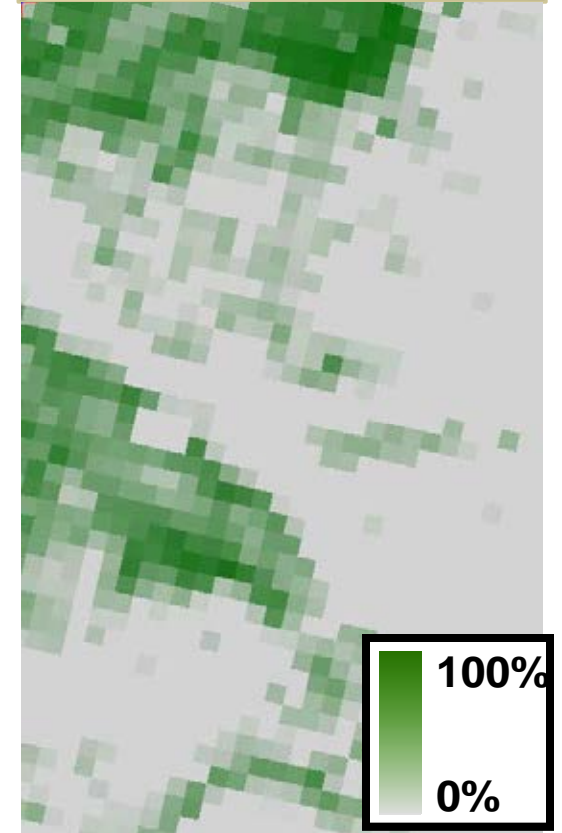
Color Infrared
Aerial Imagery



High Resolution
Land Cover



National Land
Cover Dataset



UTC Estimates

→ 35%

*Derived from 2008 imagery
2ft resolution*

→ 20

*Derived from 2001 imagery
30m resolution*

UTC Types



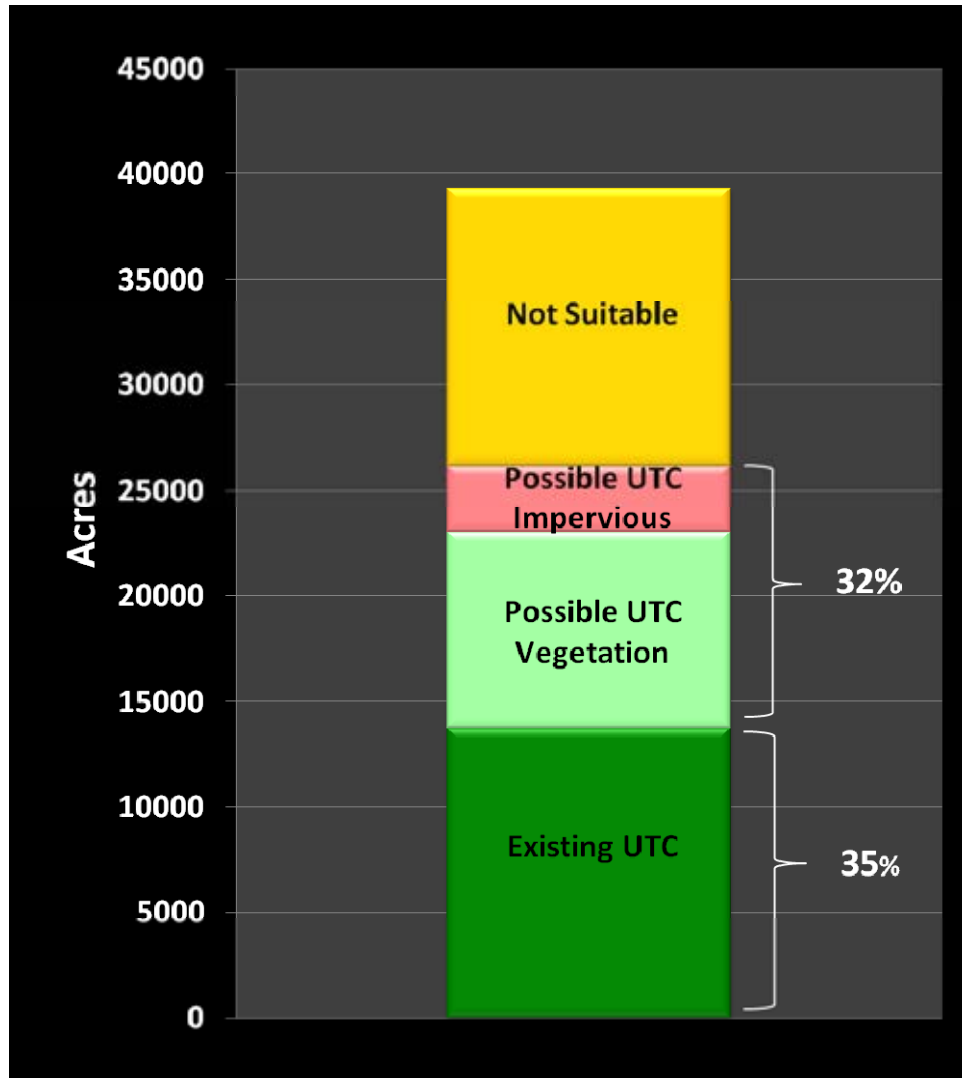
Existing

Vegetation

Impervious

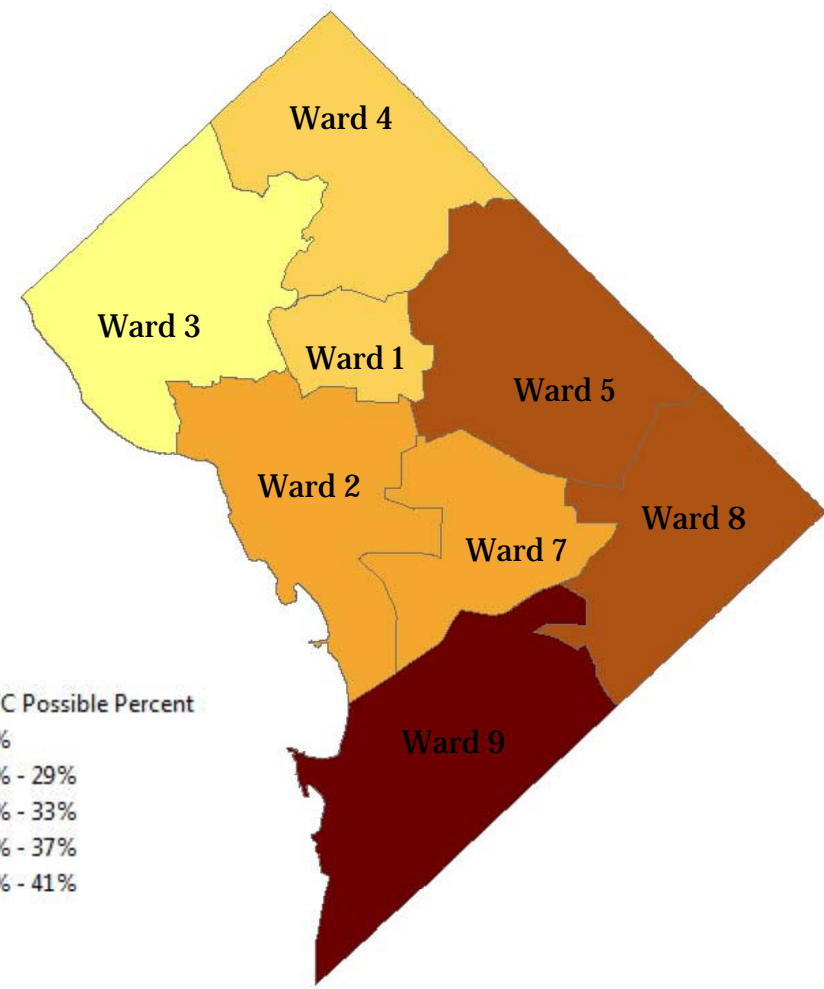
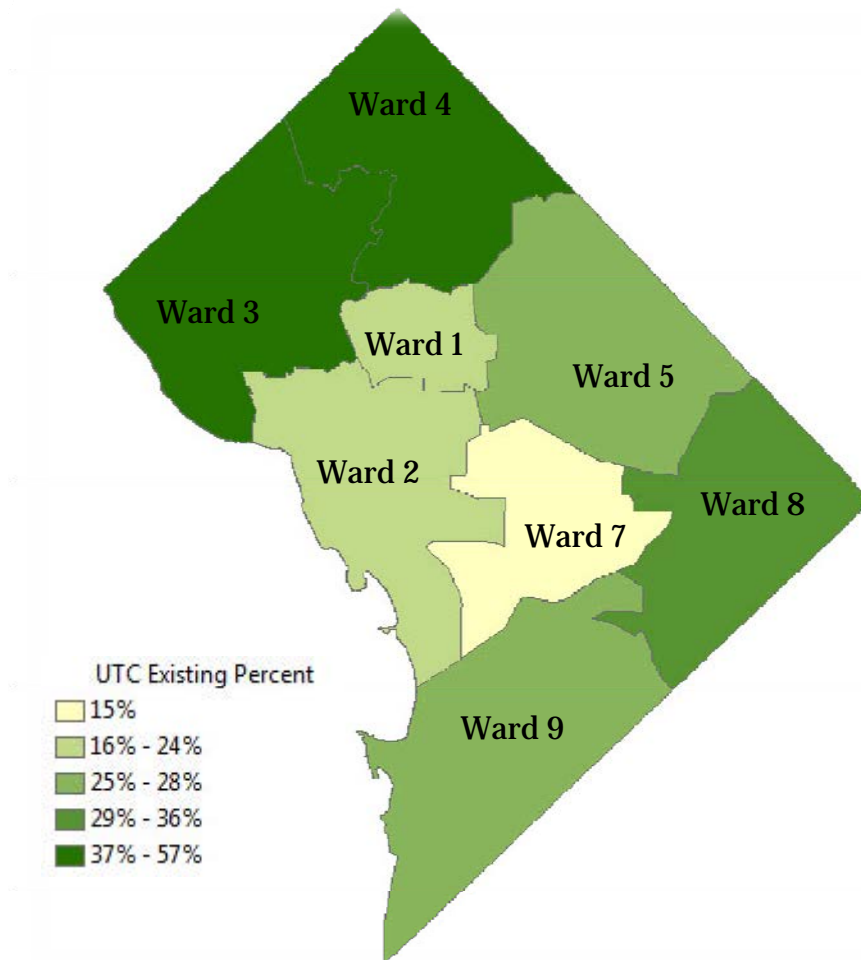
Possible

City UTC Metrics

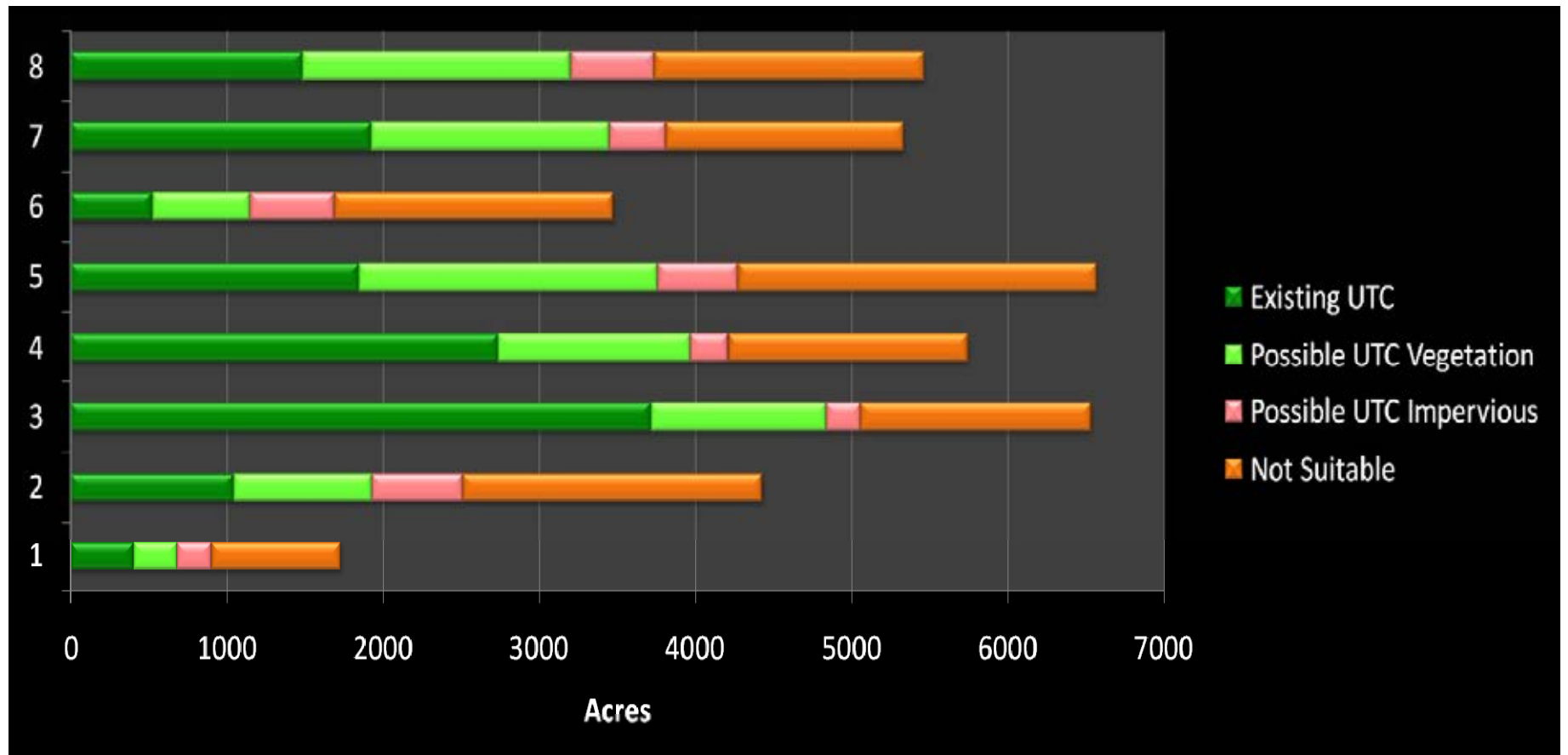


- **39283** acres of land (excludes water)
- **13673** acres of Existing UTC
- **9305** acres of Possible UTC that is grass/shrub
- **3204** acres of Possible UTC that is impervious
- **13102** acres is not suitable for tree canopy (buildings, roads)

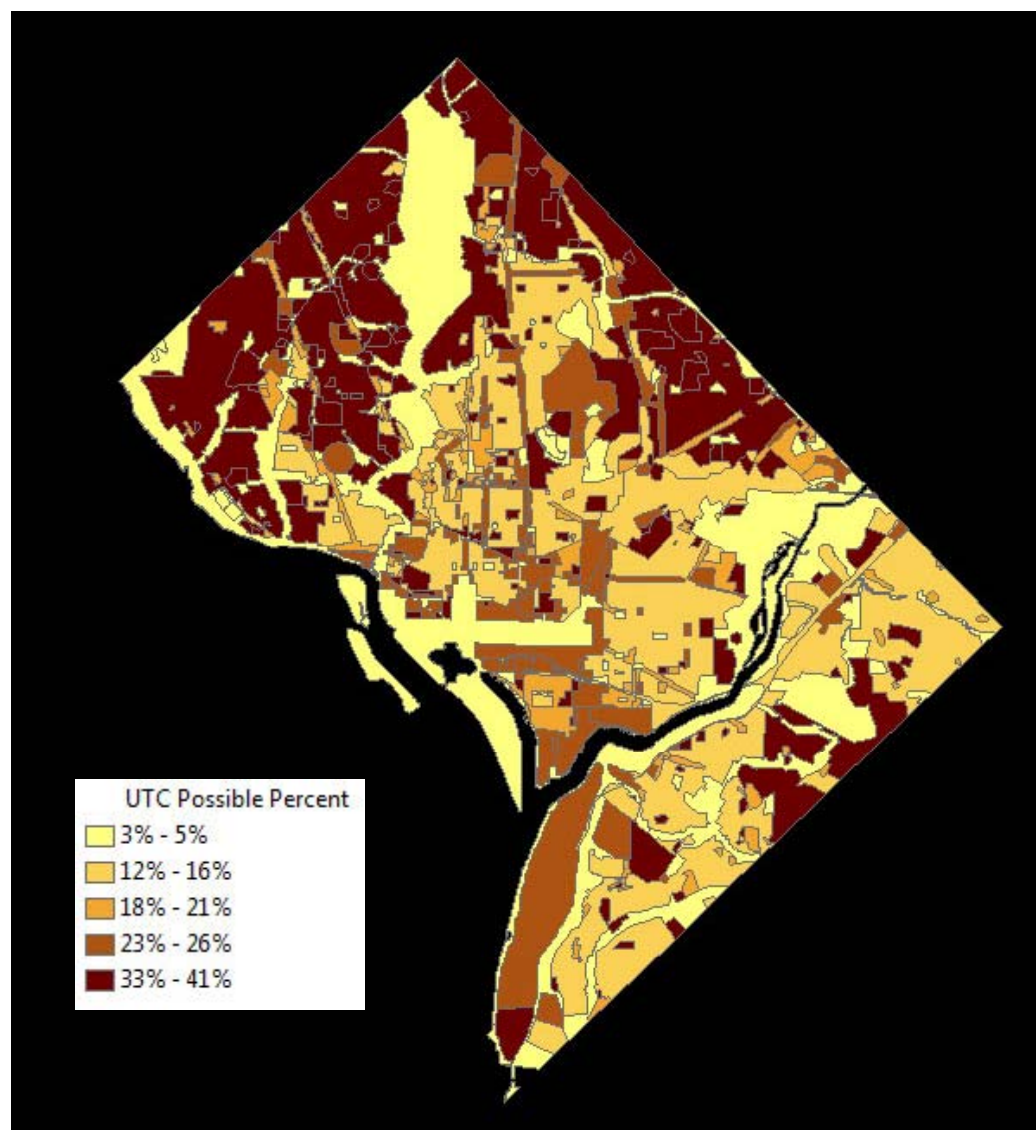
Wards Analysis



Ward Metrics

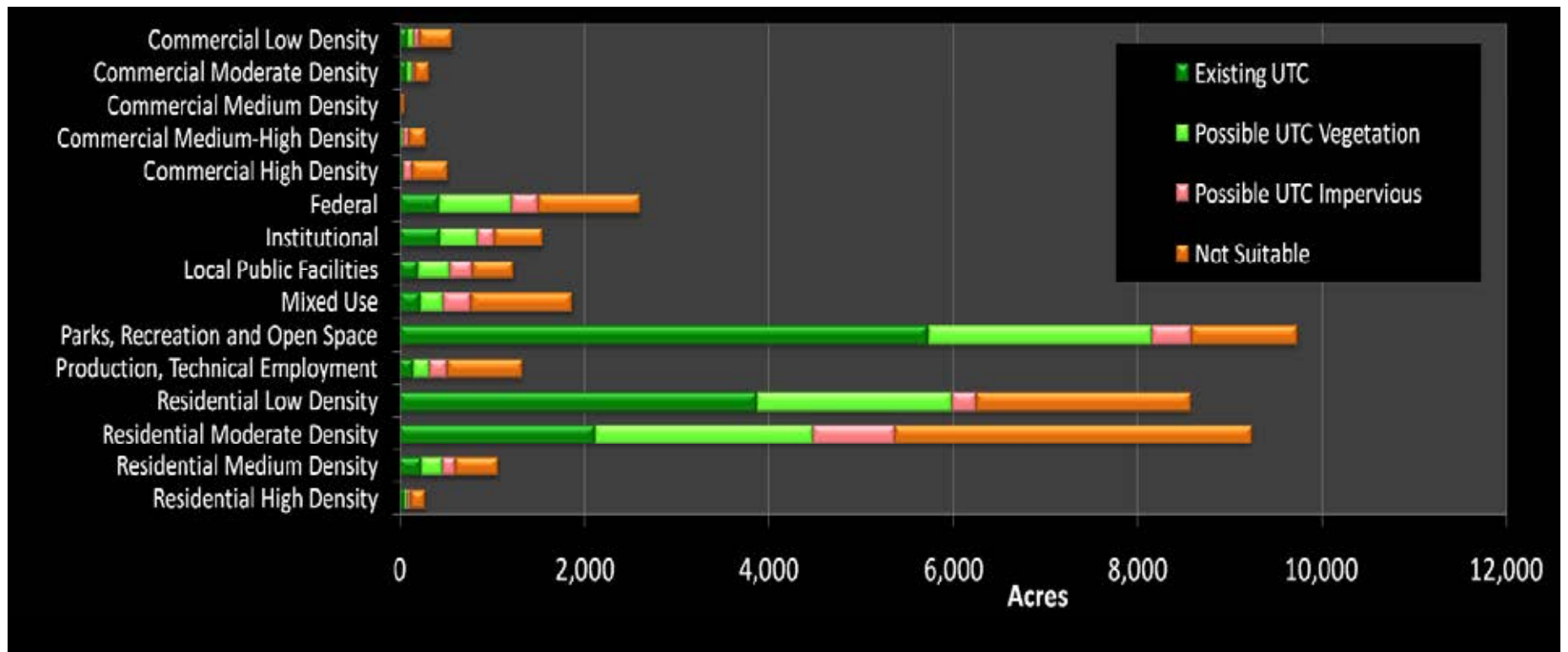


Parcel Land Use Analysis



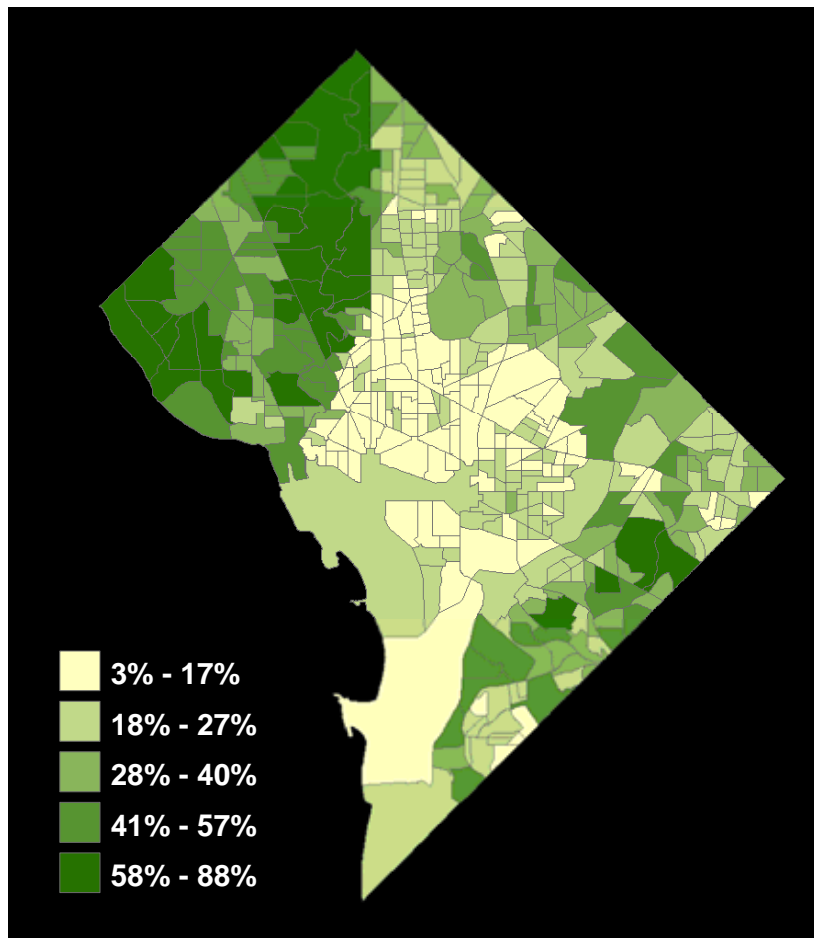
- Commercial High Density
- Commercial Low Density
- Commercial Medium Density
- Commercial Medium-High Density
- Commercial Moderate Density
- Federal
- Institutional
- Local Public Facilities
- Mixed Land Use
- No Data
- Parks, Recreation, and Open Space
- Production and Technical Employment
- Residential High Density
- Residential Low Density
- Residential Medium Density
- Residential Moderate Density
- Water Areas

Land Use UTC Metrics

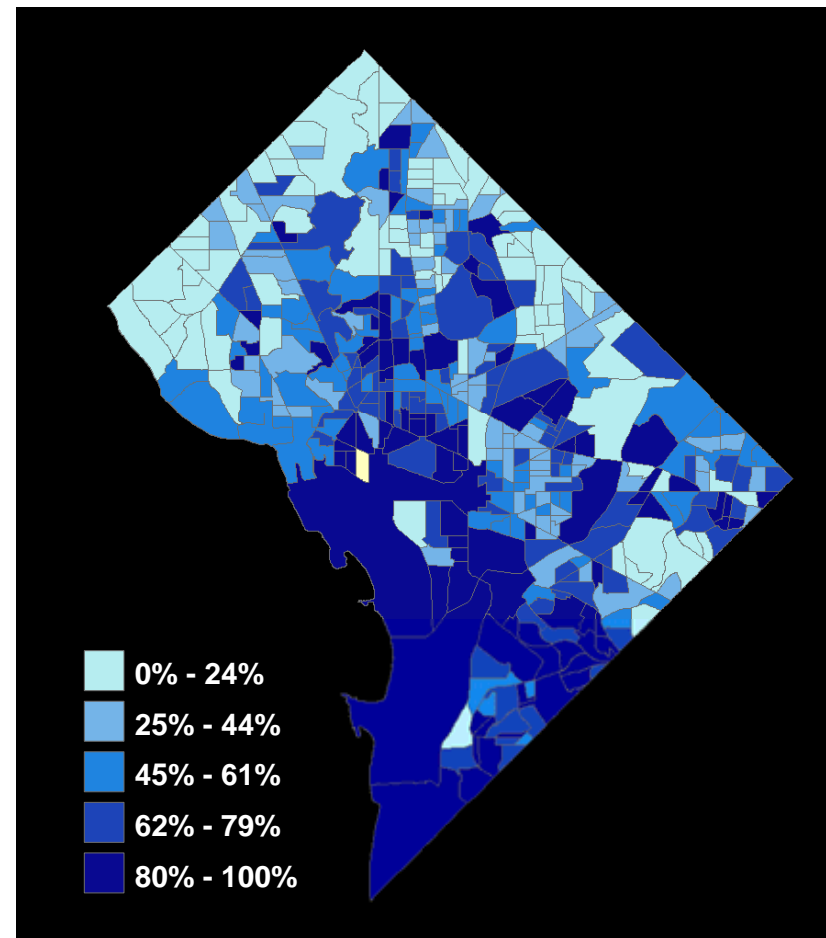


Census

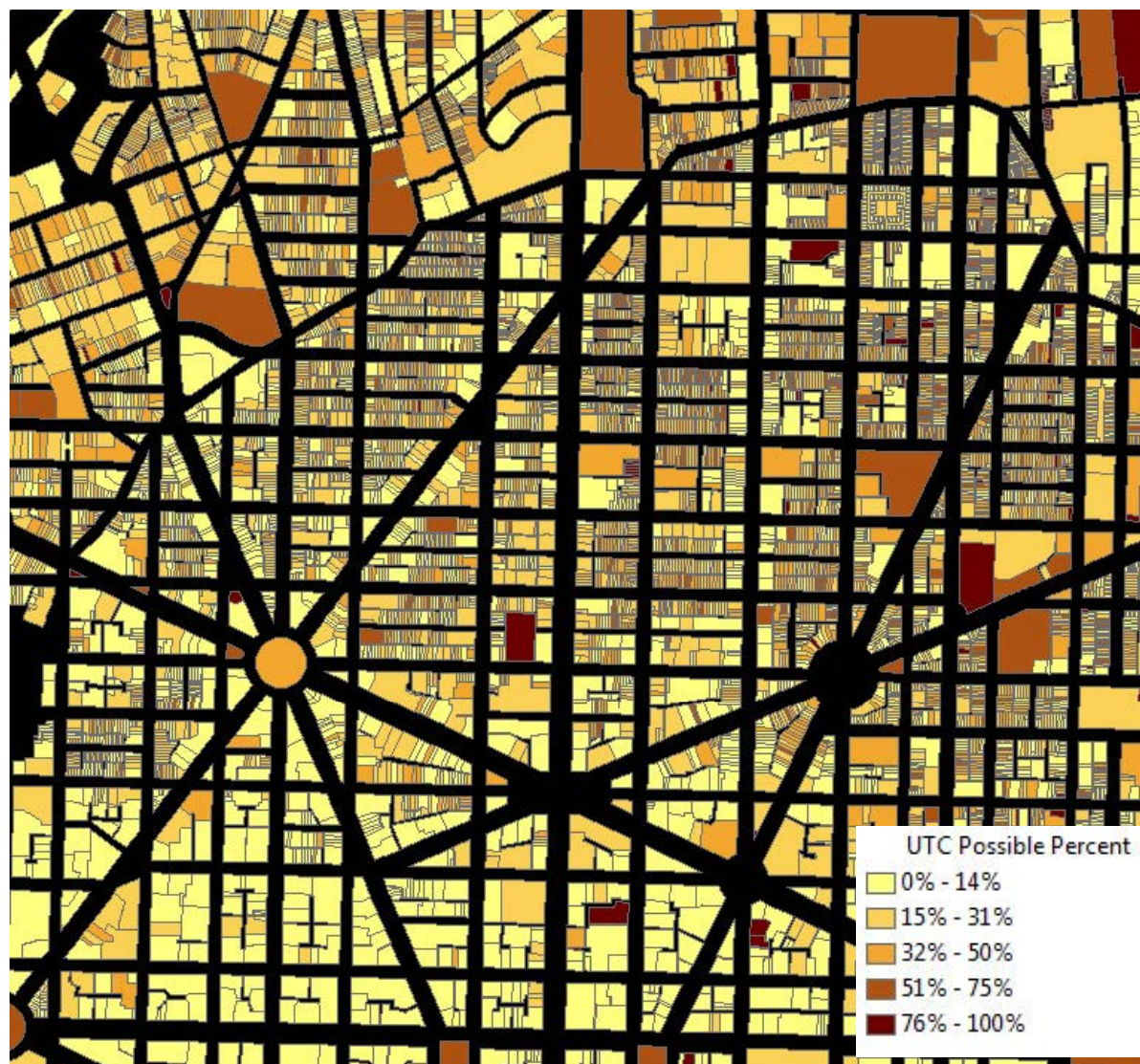
Percent Existing UTC



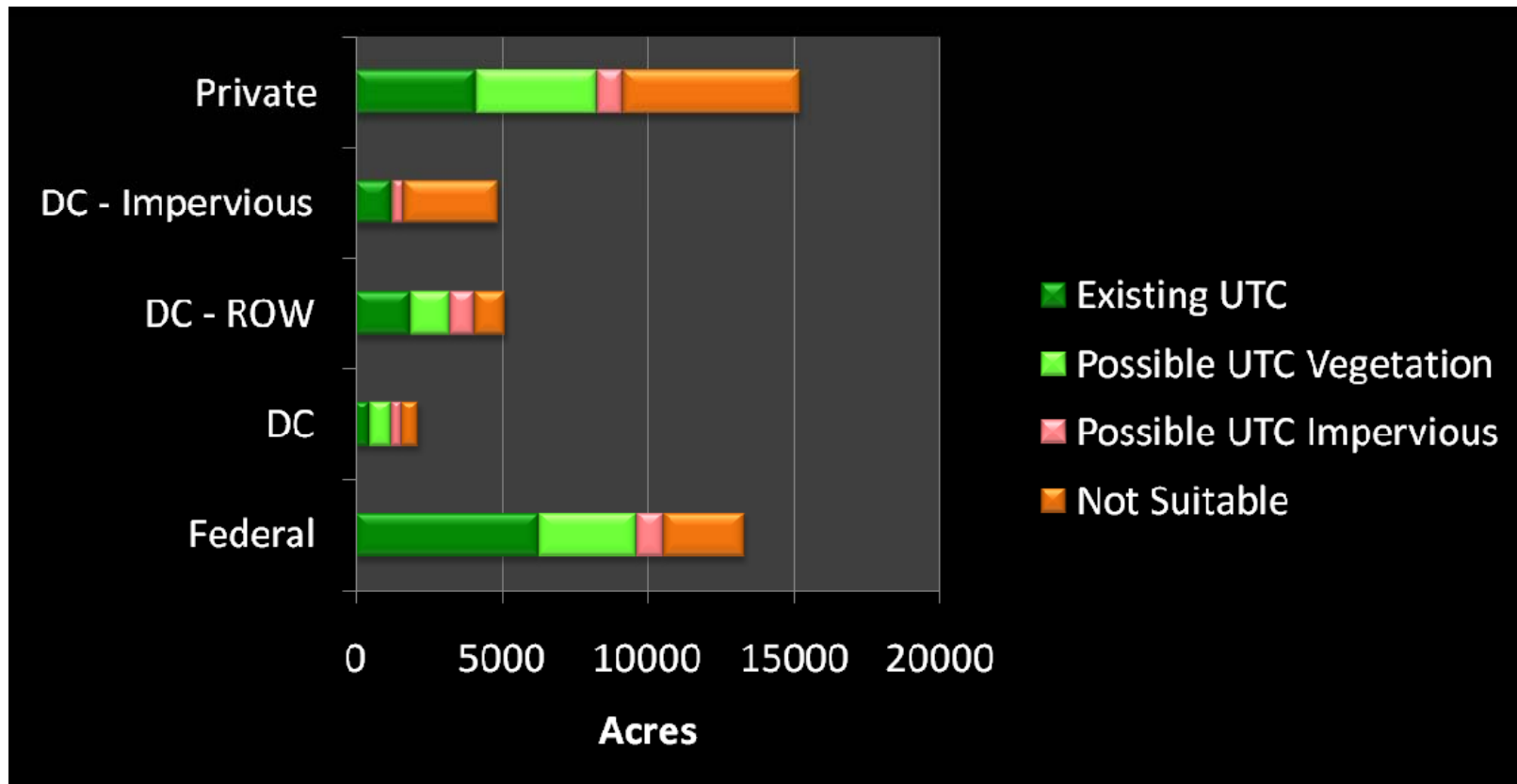
Percent Renter Occupied



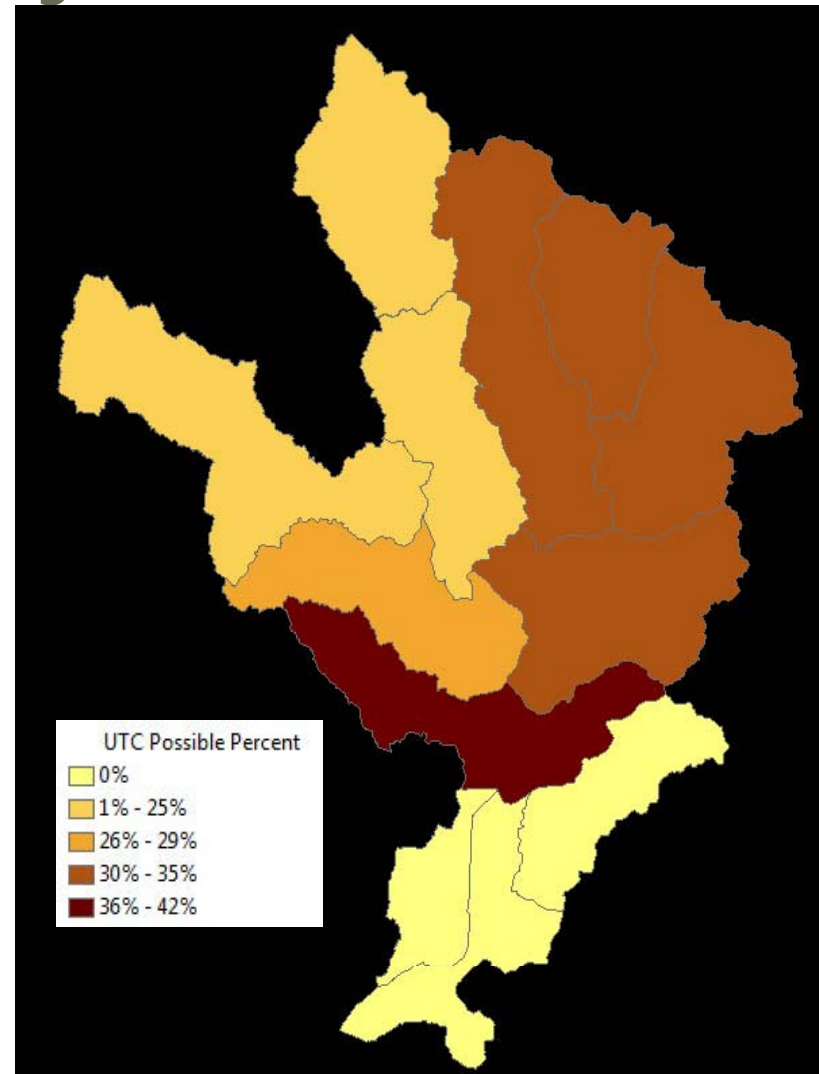
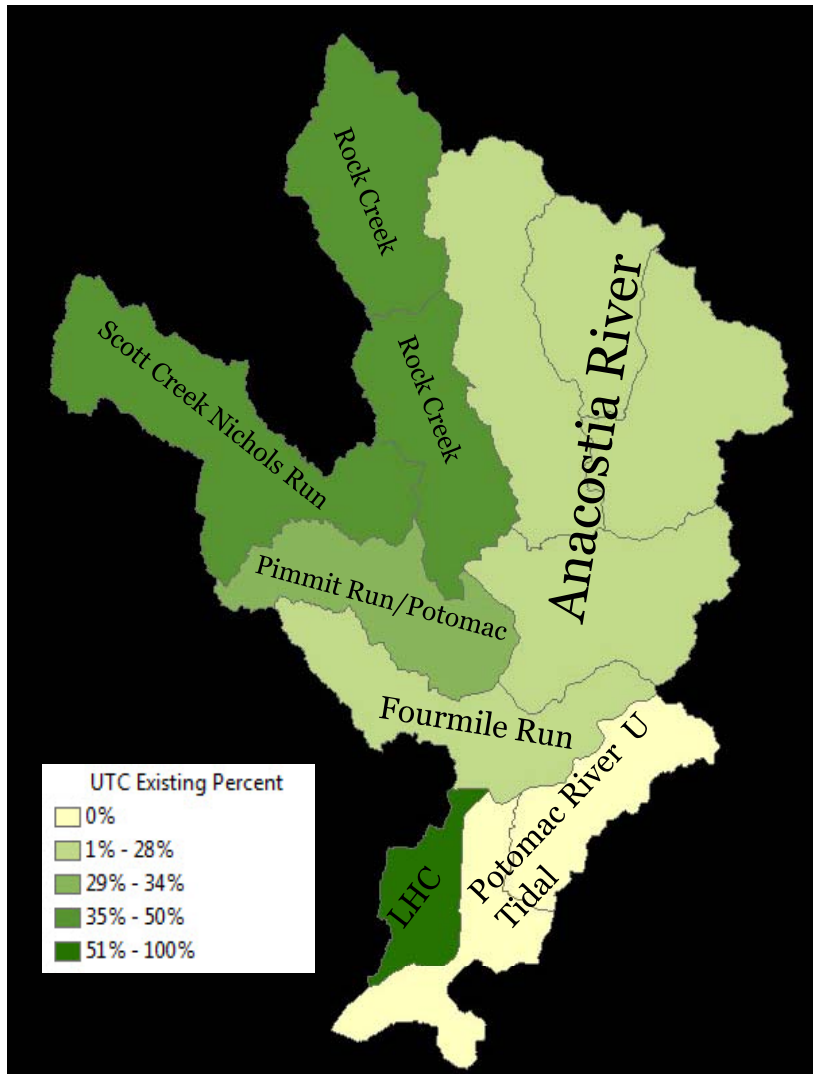
Parcel Analysis



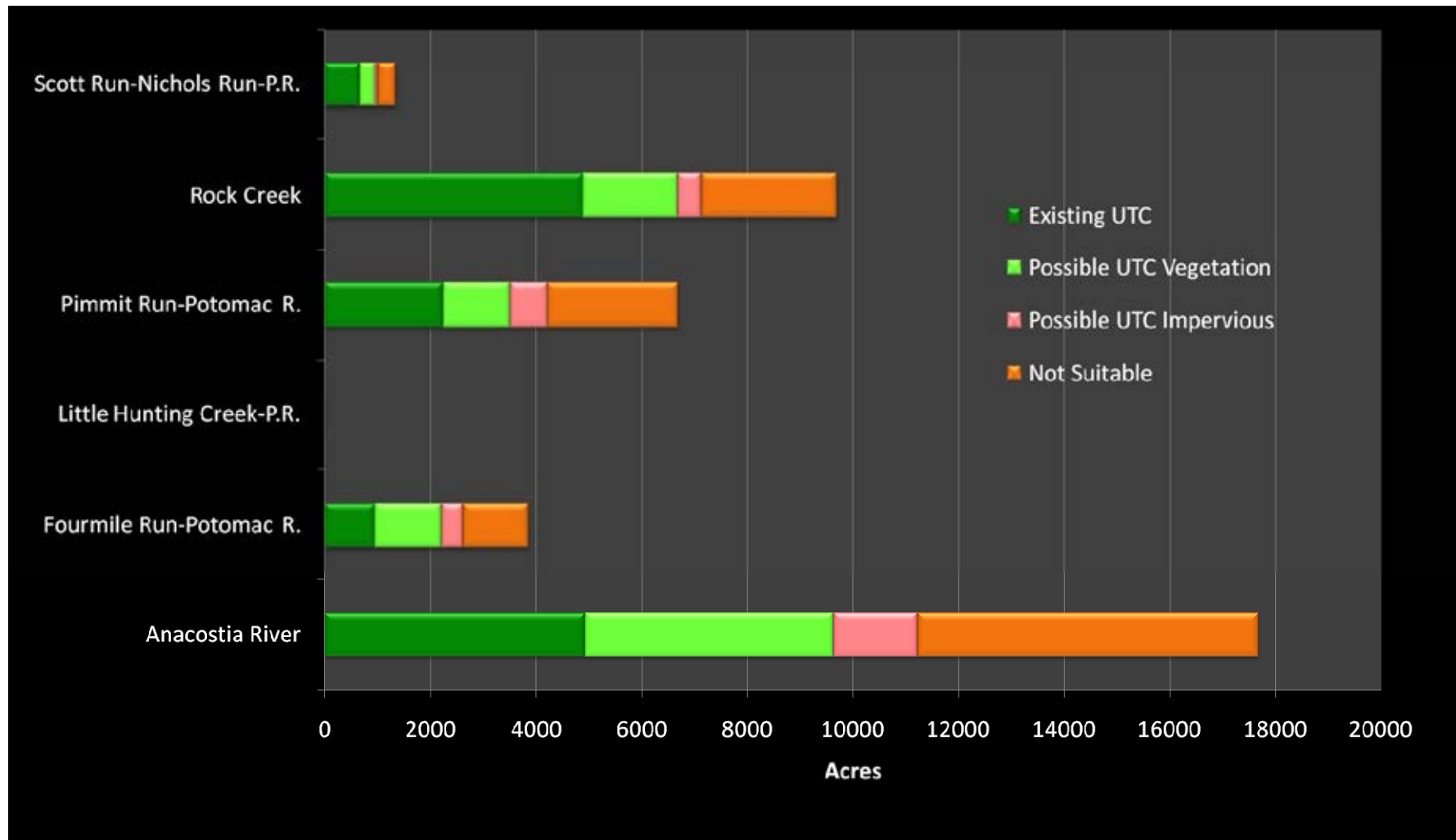
Ownership Metrics



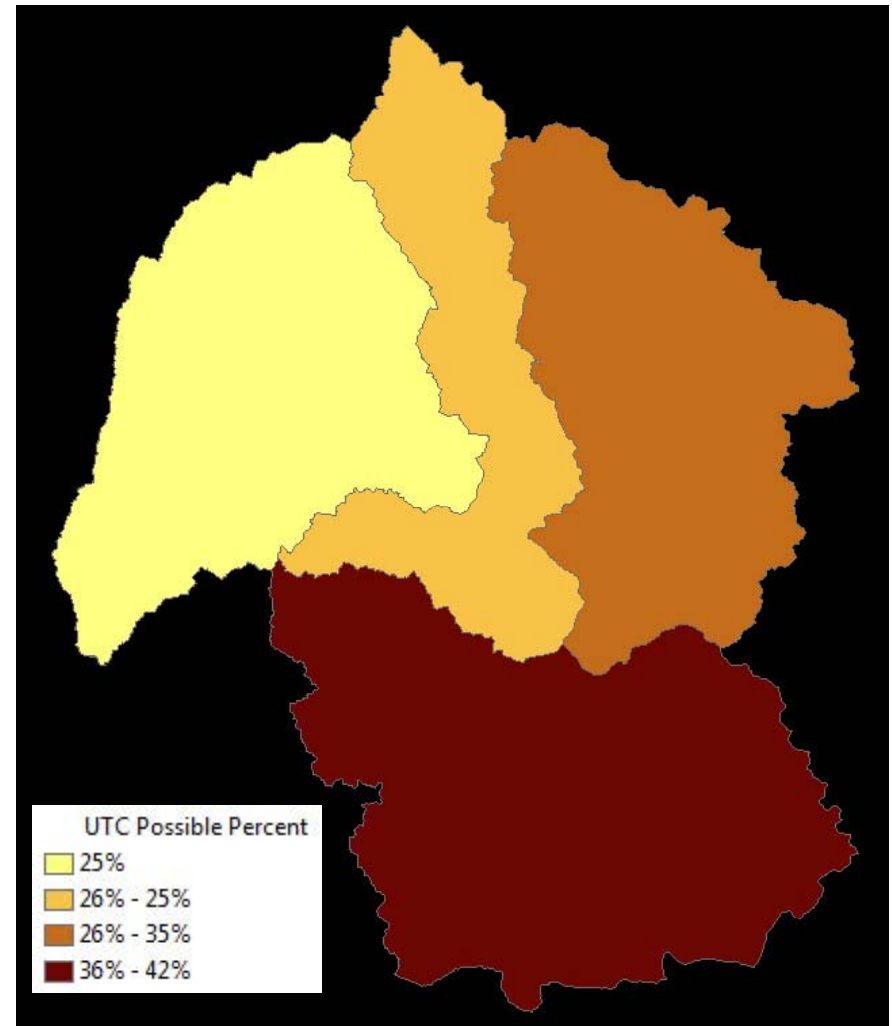
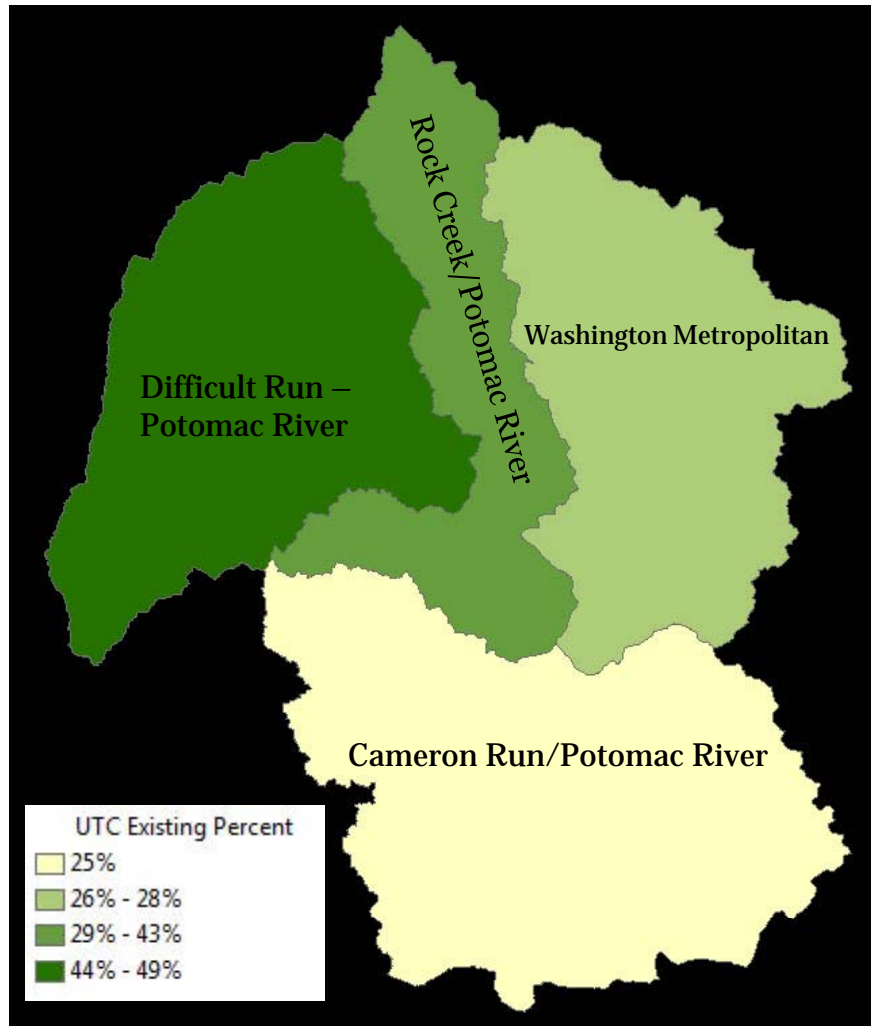
Subwatershed Analysis



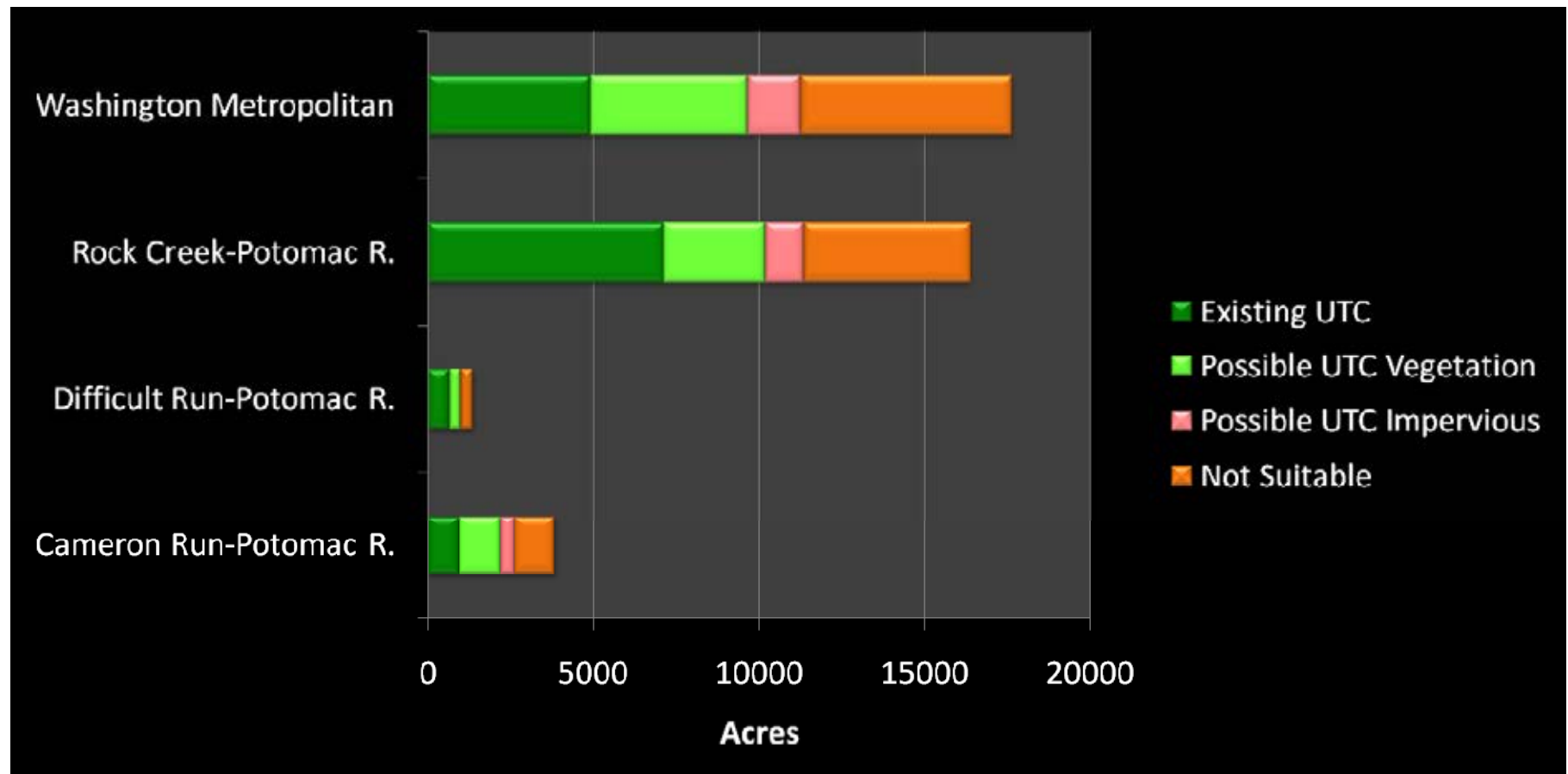
Subwatershed UTC Metrics



Watershed Analysis

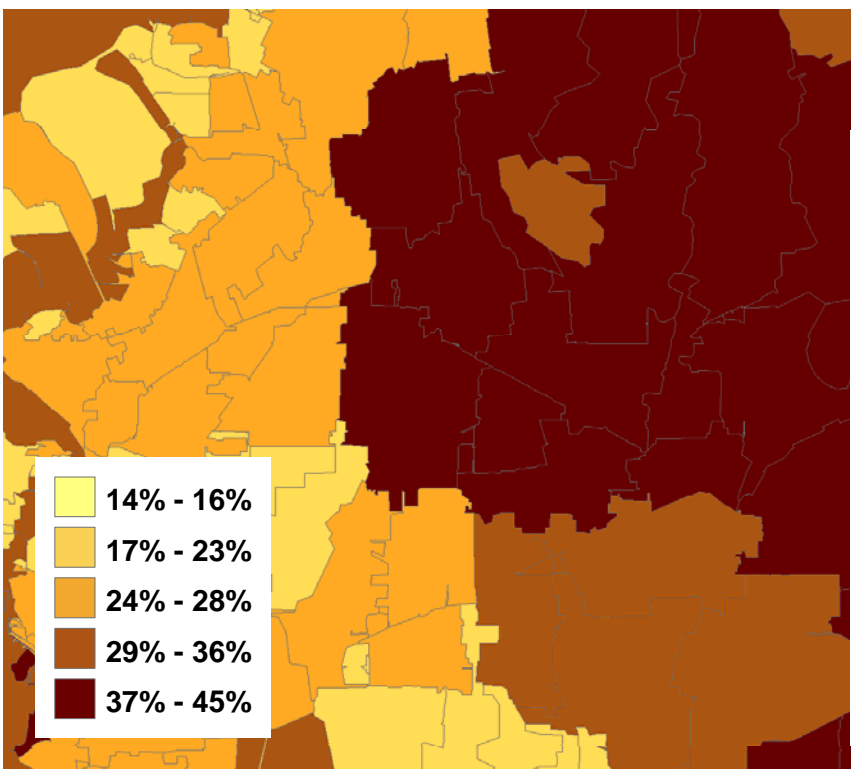
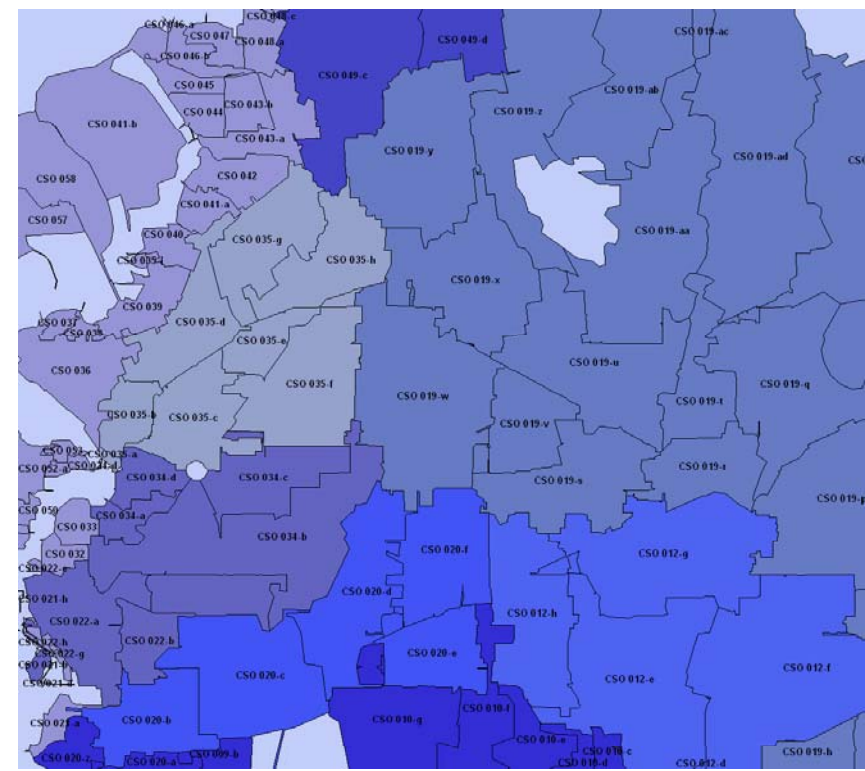


Watershed UTC Metrics

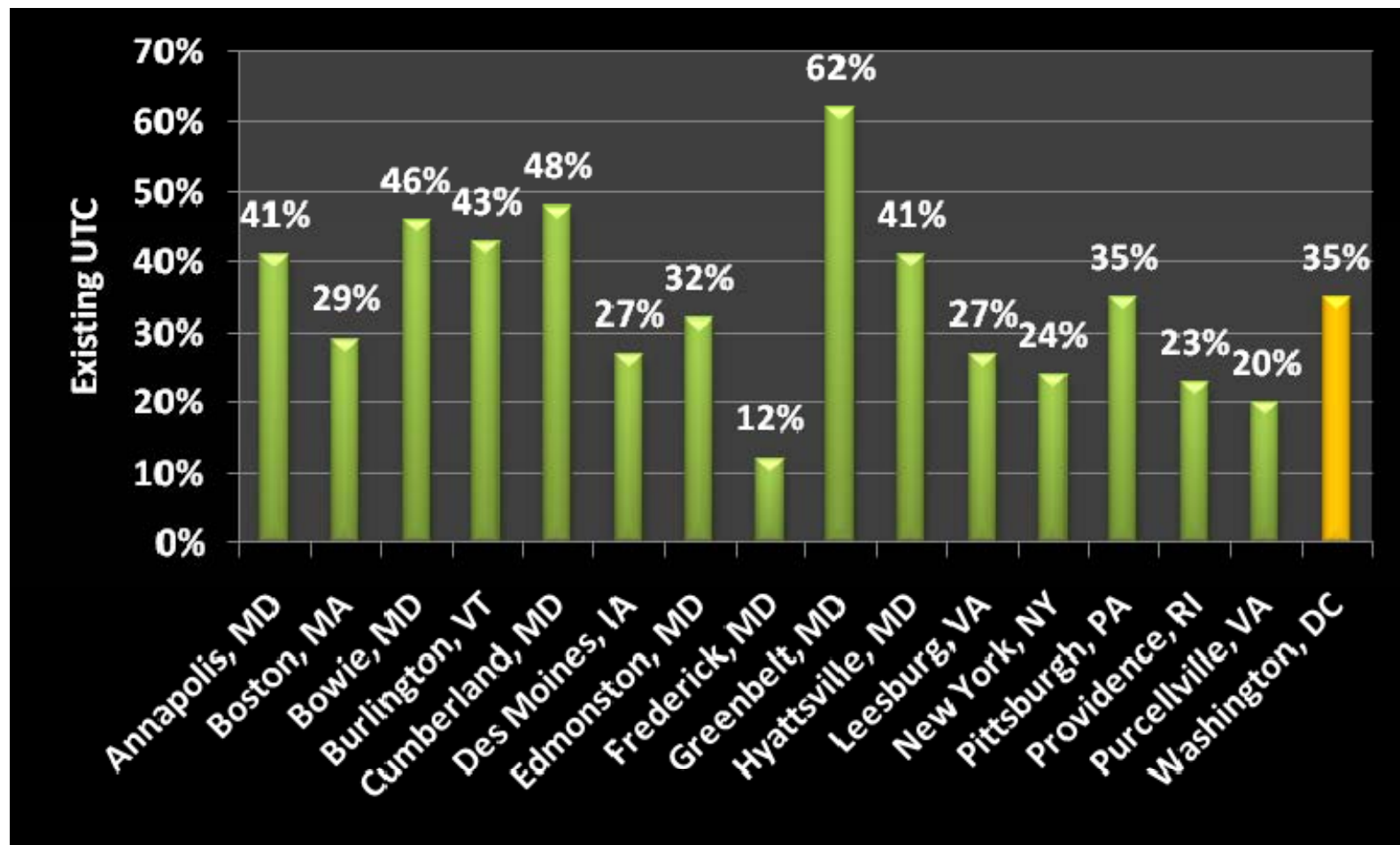


Name _____

Possible UTC



Comparison to Other Cities



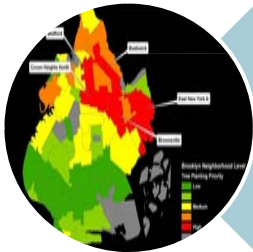
Next Steps



LiDAR



Site Selection



Prioritization

Assessing Urban Tree Canopy in the Nation's Capital

Jarlath O'Neil-Dunne

University of Vermont

Spatial Analysis Laboratory

802.656.3323

joneildu@uvm.edu



Funding for this study was provided by the U.S. Forest Service